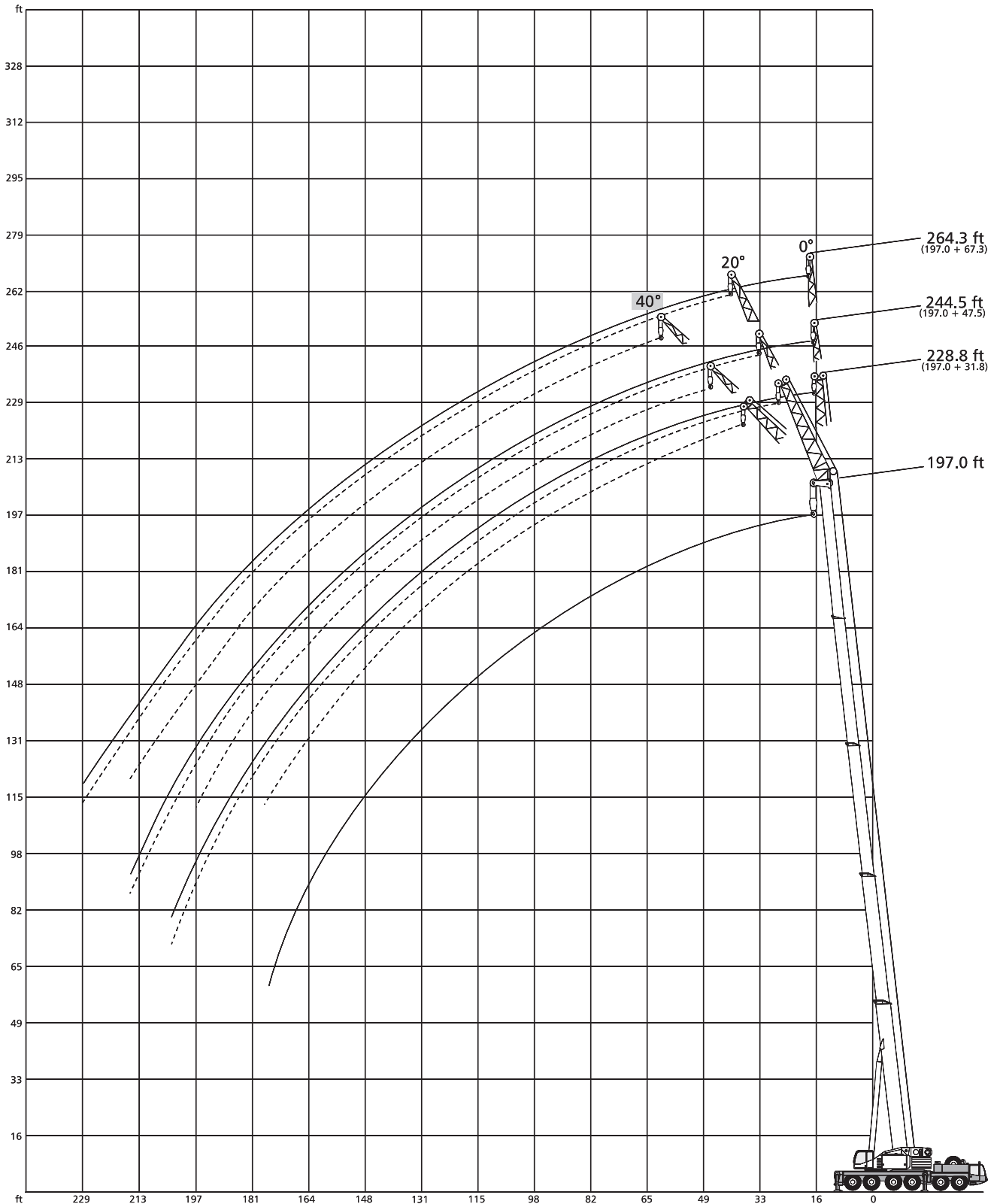




LIFTING CHARTS - All Terrain Cranes

DEMAG MODEL AC 200 - 220 TON CAPACITY

Working ranges main boom extension, main boom 197.0 ft



STERLING CRANE

Lifting capacities main boom extension

141,000 lb  360° 85%

197.0 ft Main boom

Radius ft	31.8 ft			Extension 47.5 ft			67.3 ft			Radius ft
	0°	20°	40°	0°	20°	40°	0°	20°	40°	
36	24.2	-	-	-	-	-	-	-	-	36
39	24.2	-	-	-	-	-	15.0	-	-	39
46	24.2	24.2	-	-	-	-	14.5	-	-	46
52	24.2	24.2	21.8	-	-	-	14.1	-	-	52
59	23.3	23.1	21.3	-	18.9	-	13.8	-	-	59
65	22.5	22.1	20.5	-	18.1	16.5	13.4	12.8	-	65
72	21.4	20.9	19.6	-	17.2	16.1	13.0	12.5	-	72
75	21.0	20.3	19.2	18.1	16.8	15.7	13.0	12.3	-	75
79	20.4	19.8	18.7	17.8	16.2	15.4	12.7	12.1	11.2	79
85	19.4	19.0	18.1	17.2	15.6	14.8	12.5	11.7	11.2	85
92	18.4	18.0	17.4	16.7	15.1	14.3	12.1	11.2	10.7	92
98	17.4	17.2	16.7	16.1	14.5	13.9	11.9	10.8	10.3	98
111	15.7	15.7	15.4	14.8	13.7	13.0	11.4	10.1	9.7	111
124	13.7	14.1	14.1	13.5	12.8	12.1	10.8	9.7	9.0	124
138	11.8	12.5	12.7	12.1	11.8	11.2	10.1	9.0	8.3	138
151	10.3	11.0	11.0	10.7	10.7	10.3	9.4	8.3	7.4	151
164	8.8	9.4	9.4	9.4	9.4	9.2	8.6	7.4	6.8	164
177	7.5	7.9	8.1	7.9	8.1	8.1	7.5	6.4	5.9	177
180	7.1	7.5	7.7	7.5	7.9	7.9	7.3	6.0	5.7	180
190	5.5	5.9	-	5.9	6.8	7.0	6.6	5.3	5.3	190
197	4.8	5.0	-	5.2	5.9	6.3	5.7	4.6	4.8	197
203	4.0	4.2	-	4.4	5.1	-	5.1	4.2	4.6	203
216	-	-	-	3.1	3.5	-	3.5	3.5	4.6	216
229	-	-	-	-	-	-	2.2	2.8	-	229
233	-	-	-	-	-	-	-	-	-	233