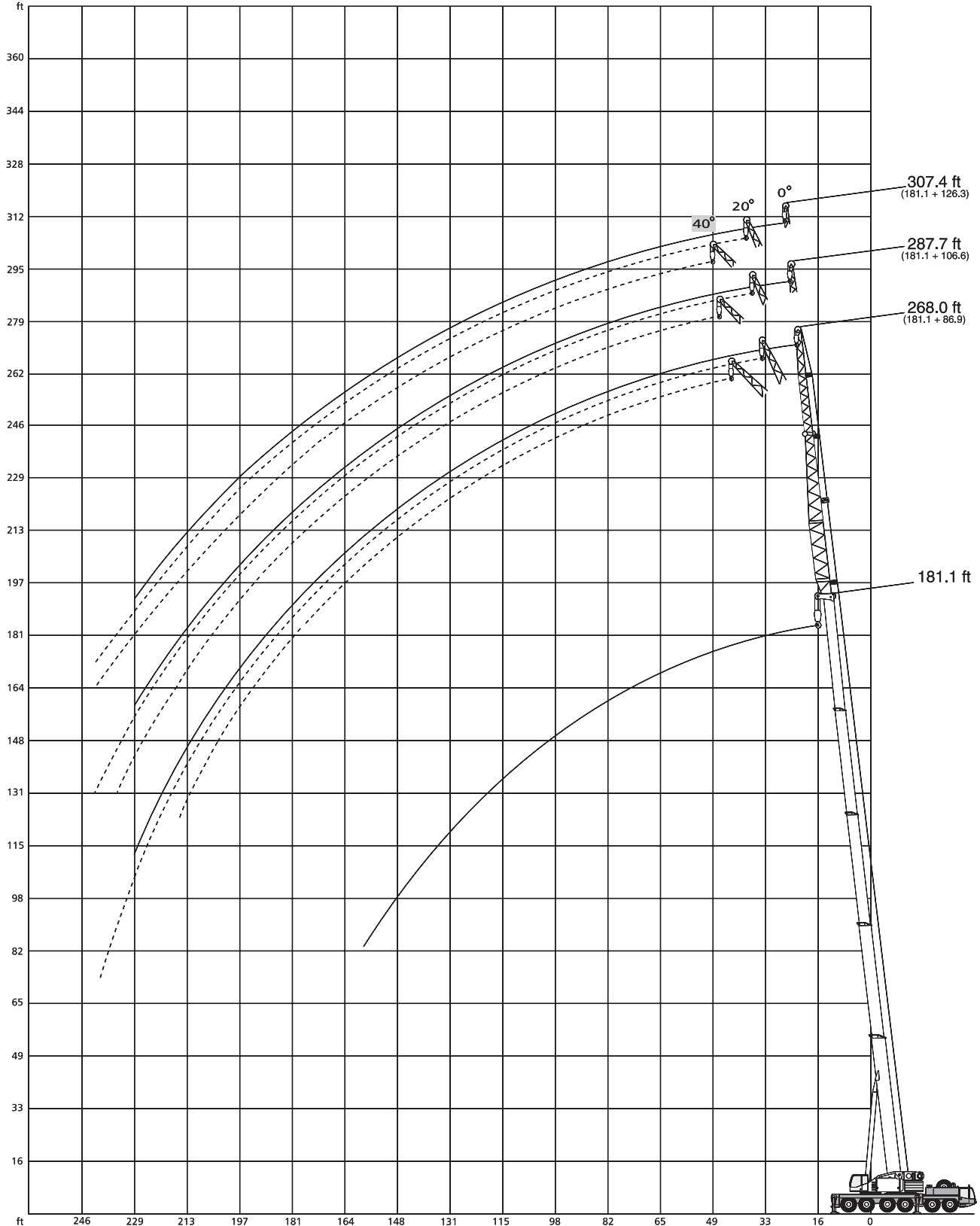




LIFTING CHARTS - All Terrain Cranes

DEMAG MODEL AC 200 - 220 TON CAPACITY

Working ranges main boom extension, main boom 181.1 ft



STERLING CRANE

Lifting capacities main boom extension

141,000 lb  360° 85%

181.1 ft Main boom

Radius ft	86.9 ft			Extension 106.6 ft			126.3 ft			Radius ft
	0°	20°	40°	0°	20°	40°	0°	20°	40°	
39	13.2	-	-	-	-	-	-	-	-	39
46	13.0	-	-	9.4	-	-	7.2	-	-	46
52	12.8	11.0	-	9.2	-	-	7.0	-	-	52
59	12.5	10.8	8.5	9.0	8.5	-	6.8	6.3	-	59
65	12.1	10.4	8.5	9.0	8.5	-	6.4	6.3	-	65
69	11.9	10.1	8.3	8.8	8.3	7.4	6.3	6.1	-	69
72	11.9	10.1	8.3	8.8	8.3	7.2	6.1	6.1	5.7	72
79	11.4	9.6	8.3	8.5	8.1	7.2	5.9	5.9	5.5	79
85	11.0	9.4	8.1	8.3	8.1	7.0	5.7	5.7	5.3	85
92	10.7	9.2	7.9	8.1	7.9	6.8	5.5	5.5	5.0	92
98	10.3	9.0	7.9	7.9	7.7	6.6	5.3	5.3	4.8	98
111	9.7	8.6	7.7	7.7	7.2	6.4	5.0	5.0	4.4	111
124	8.8	8.1	7.5	7.2	6.8	5.9	4.6	4.6	4.2	124
138	8.3	7.9	7.2	7.0	6.3	5.7	4.4	4.4	3.9	138
151	7.7	7.4	7.0	6.6	5.9	5.5	4.1	3.9	3.7	151
164	7.4	7.2	7.0	6.3	5.5	5.2	3.9	3.7	3.5	164
177	7.2	7.0	6.8	5.9	5.2	5.0	3.9	3.5	3.3	177
190	7.0	6.8	6.8	5.7	4.8	4.8	3.7	3.3	3.3	190
203	5.9	6.6	6.8	5.5	4.6	4.6	3.5	3.0	3.0	203
216	4.4	4.9	5.1	4.6	4.4	4.6	3.5	3.0	3.0	216
229	3.3	3.5	-	3.3	3.7	4.0	3.3	2.8	2.8	229
233	-	3.3	-	-	3.3	3.5	-	2.8	2.8	233
243	-	2.1	-	-	2.4	-	-	2.6	2.6	243