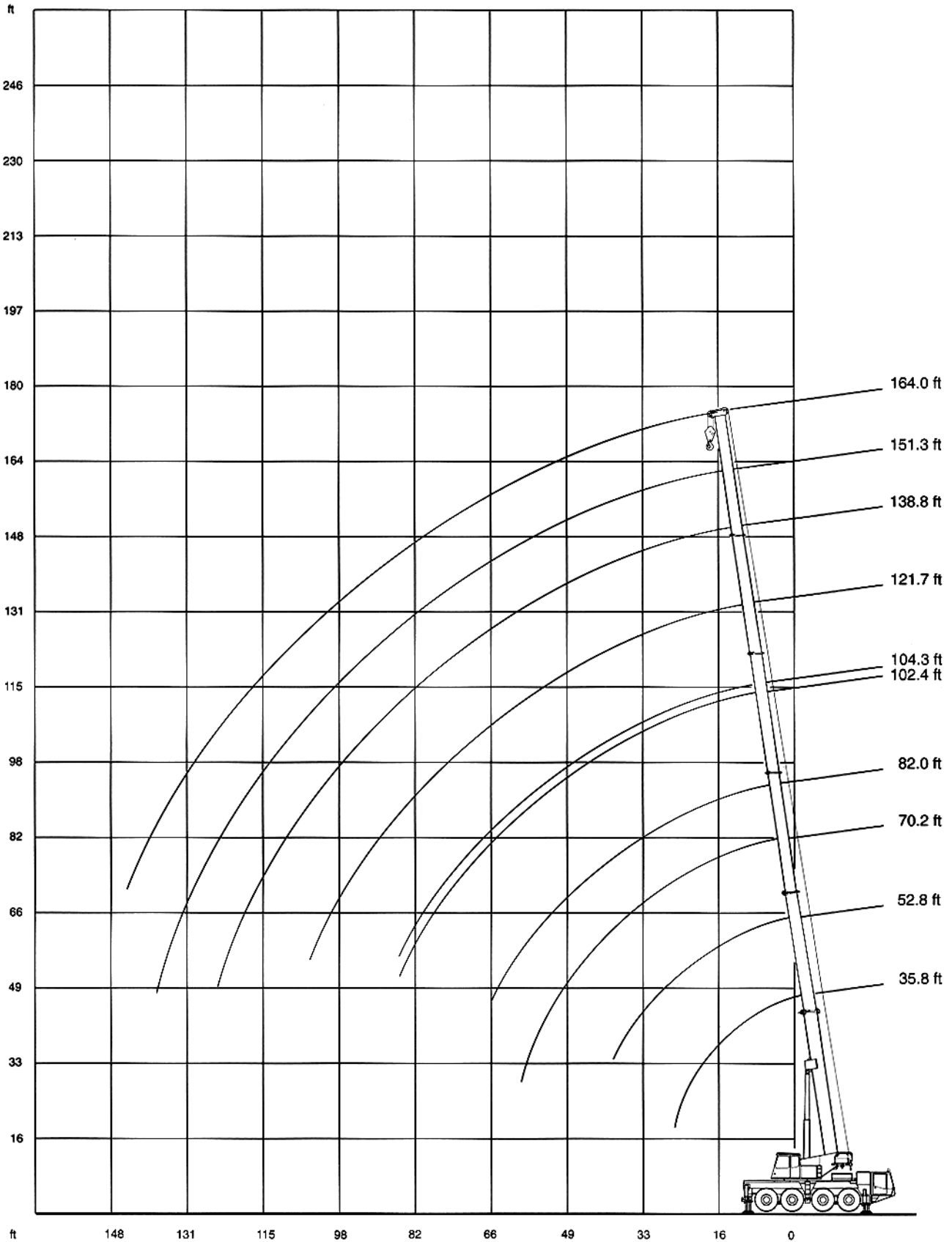




LIFTING CHARTS - All Terrain Cranes

DEMAG MODEL AC 205 - 100 TON CAPACITY

Working Range Main Boom



STERLING CRANE

Lifting capacities main boom in 1,000 lb

39,700 lb		Main Boom (ft)													85%		
Radius		25' 3" x 23' 360°													0° over rear		
ft		35.8 ft	52.8 ft	70.2 ft	70.5 ft	82.0 ft	82.0 ft	102.4 ft	104.3 ft	121.7 ft	122.1 ft	138.8 ft	139.4 ft	151.3 ft	164.0 ft	35.8 ft	52.8 ft
ft		1,000 lb															
10	200.0*	-	-	-	-	-	-	-	-	-	-	-	-	-	-	-	
10	168.5	-	-	-	-	-	-	-	-	-	-	-	-	-	-	-	
11	160.7	121.2	-	-	-	-	-	-	-	-	-	-	-	-	-	-	
13	145.5	121.2	97.3	41.2	-	-	-	-	-	-	-	-	-	-	27.7	27.3	
15	132.4	120.4	91.2	41.2	72.7	38.8	-	-	-	-	-	-	-	-	24.5	24.1	
16	126.6	116.9	87.5	41.2	72.7	38.8	41.2	36.5	-	-	-	-	-	-	23.0	22.6	
19	106.9	104.3	78.8	41.2	70.6	38.8	41.2	35.1	36.5	26.6	-	-	-	-	19.3	18.9	
23	85.1	84.5	69.3	41.2	63.2	38.8	41.2	32.3	35.6	26.6	26.6	19.4	-	-	15.4	14.7	
26	70.0	73.2	63.5	41.2	57.5	38.8	41.2	30.1	34.2	26.6	26.6	19.4	19.4	-	12.9	12.3	
29	-	64.1	58.2	41.2	52.2	38.8	41.2	28.3	33.0	26.6	26.6	19.4	19.4	14.5	-	10.4	
33	-	53.1	50.9	40.8	46.0	38.7	38.8	25.6	31.2	26.1	26.6	19.4	19.3	14.5	-	8.2	
39	-	40.0	37.8	37.4	37.5	36.0	34.0	22.6	28.1	23.5	26.2	19.4	18.9	14.5	-	5.6	
46	-	-	28.1	33.4	28.1	31.6	29.2	20.0	24.6	20.6	23.7	17.6	18.2	14.3	-	-	
52	-	-	22.5	27.8	22.3	26.6	25.8	18.0	22.2	18.4	21.1	16.2	17.2	13.9	-	-	
59	-	-	17.4	22.5	17.2	21.6	20.7	16.3	19.6	16.3	18.5	14.5	16.3	13.0	-	-	
65	-	-	-	-	14.0	18.2	17.5	15.1	18.0	14.5	16.7	13.1	14.9	12.2	-	-	
72	-	-	-	-	-	-	14.4	13.9	15.2	12.8	15.0	11.9	13.6	11.2	-	-	
79	-	-	-	-	-	-	11.8	12.5	12.7	11.6	12.4	10.7	12.2	10.1	-	-	
85	-	-	-	-	-	-	10.0	11.7	10.8	10.6	10.4	9.9	10.8	9.3	-	-	
92	-	-	-	-	-	-	-	-	9.2	9.6	8.7	9.2	9.2	8.3	-	-	
98	-	-	-	-	-	-	-	-	7.8	8.4	7.3	8.4	7.8	7.7	-	-	
105	-	-	-	-	-	-	-	-	6.3	7.2	6.1	7.2	6.6	6.6	-	-	
111	-	-	-	-	-	-	-	-	-	-	5.1	6.2	5.6	5.6	-	-	
118	-	-	-	-	-	-	-	-	-	-	4.2	5.3	4.6	4.6	-	-	
124	-	-	-	-	-	-	-	-	-	-	3.2	4.5	3.6	3.6	-	-	
131	-	-	-	-	-	-	-	-	-	-	-	-	2.8	2.8	-	-	
138	-	-	-	-	-	-	-	-	-	-	-	-	2.1	2.1	-	-	
144	-	-	-	-	-	-	-	-	-	-	-	-	-	1.5	-	-	

Boom extension sequence %

Tele 1	0	0	67	0	80	36	67	0	67	40	90	67	90	100	0	0
Tele 2	0	67	67	34	100	36	67	67	67	74	90	67	90	100	0	67
Tele 3	0	0	0	34	0	36	42	67	67	74	74	90	90	100	0	0
Tele 4	0	0	0	34	0	36	42	67	67	74	74	90	90	100	0	0

*) over rear

STERLING CRANE

Lifting capacities main boom in 1,000 lb

17,650 lb															85%	
Radius	Main Boom (ft)														0° over rear	
	35.8 ft	52.8 ft	70.2 ft	70.5 ft	82.0 ft	82.0 ft	102.4 ft	104.3 ft	121.7 ft	122.1 ft	138.8 ft	139.4 ft	151.3 ft	164.0 ft	35.8 ft	52.8 ft
ft	1,000 lb														1,000 lb	
10	200.0*	-	-	-	-	-	-	-	-	-	-	-	-	-	-	-
10	168.4	-	-	-	-	-	-	-	-	-	-	-	-	-	-	-
11	160.1	121.2	-	-	-	-	-	-	-	-	-	-	-	-	-	-
13	144.6	121.2	97.3	41.2	-	-	-	-	-	-	-	-	-	-	26.6	25.9
15	126.3	120.0	91.2	41.2	72.7	38.8	-	-	-	-	-	-	-	-	23.4	22.8
16	117.2	114.9	87.5	41.2	72.7	38.8	41.2	36.5	-	-	-	-	-	-	21.9	21.4
19	96.1	95.6	78.8	41.2	70.6	38.8	41.2	35.1	36.5	26.6	-	-	-	-	18.2	17.8
23	75.6	74.7	69.2	41.2	63.1	38.8	41.2	32.3	35.6	26.6	26.6	19.4	-	-	14.3	13.8
26	59.7	58.8	55.9	41.2	55.3	38.8	41.2	30.1	34.2	26.6	26.6	19.4	19.4	-	12.0	11.6
29	-	47.9	45.2	41.2	45.2	38.8	41.2	28.3	33.0	26.6	26.6	19.4	19.4	14.5	-	9.6
33	-	37.5	35.1	40.7	35.1	38.5	38.7	25.6	31.2	26.1	26.6	19.4	19.3	14.5	-	7.6
39	-	27.3	25.0	31.4	24.8	30.0	29.2	22.6	28.1	23.5	26.2	19.4	18.9	14.5	-	5.0
46	-	-	17.3	23.5	17.1	21.9	21.3	20.0	22.4	20.6	22.2	17.6	18.2	14.3	-	-
52	-	-	12.9	18.9	12.7	17.5	16.9	18.0	17.7	18.4	17.5	16.2	17.2	13.9	-	-
59	-	-	9.0	14.8	8.8	13.6	12.6	15.4	13.9	14.8	13.6	14.5	14.1	13.0	-	-
65	-	-	-	-	6.4	10.8	9.9	13.0	11.0	12.1	10.8	12.1	11.5	11.4	-	-
72	-	-	-	-	-	-	7.5	10.4	8.8	9.5	8.2	9.5	9.1	9.1	-	-
79	-	-	-	-	-	-	5.6	8.7	6.7	7.6	6.5	7.6	6.9	6.9	-	-
85	-	-	-	-	-	-	4.4	7.1	5.3	6.2	5.1	6.2	5.5	5.5	-	-
92	-	-	-	-	-	-	-	-	4.1	4.8	3.5	4.8	4.1	4.1	-	-
98	-	-	-	-	-	-	-	-	3.1	4.0	2.7	4.0	3.1	3.1	-	-
105	-	-	-	-	-	-	-	-	2.2	2.8	1.7	2.8	2.2	2.2	-	-
111	-	-	-	-	-	-	-	-	-	-	-	2.2	-	-	-	-
118	-	-	-	-	-	-	-	-	-	-	-	1.5	-	-	-	-

Boom extension sequence %

Tele 1	0	0	67	0	80	36	67	0	67	40	90	67	90	100	0	0
Tele 2	0	67	67	34	100	36	67	67	67	74	90	67	90	100	0	67
Tele 3	0	0	0	34	0	36	42	67	67	74	74	90	90	100	0	0
Tele 4	0	0	0	34	0	36	42	67	67	74	74	90	90	100	0	0

*) over rear

STERLING CRANE

Lifting capacities main boom in 1,000 lb

11,050 lb		25' 3" x 23' 360°													85%	
Radius	Main Boom (ft)														0° over rear	
	35.8 ft	52.8 ft	70.2 ft	70.5 ft	82.0 ft	82.0 ft	102.4 ft	104.3 ft	121.7 ft	122.1 ft	138.8 ft	139.4 ft	151.3 ft	164.0 ft	35.8 ft	52.8 ft
ft	1,000 lb														1,000 lb	
10	168.4	-	-	-	-	-	-	-	-	-	-	-	-	-	-	-
11	160.1	121.2	-	-	-	-	-	-	-	-	-	-	-	-	-	-
13	143.6	121.2	97.3	41.2	-	-	-	-	-	-	-	-	-	-	26.2	25.7
15	122.0	119.4	91.2	41.2	72.7	38.8	-	-	-	-	-	-	-	-	23.0	22.3
16	113.1	111.9	87.5	41.2	72.7	38.8	41.2	36.5	-	-	-	-	-	-	21.5	21.0
19	92.6	92.1	78.8	41.2	70.6	38.8	41.2	35.1	36.5	26.6	-	-	-	-	17.9	17.3
23	67.5	66.6	63.3	41.2	63.1	38.8	41.2	32.3	35.6	26.6	26.6	19.4	-	-	14.0	13.6
26	53.0	52.1	49.4	41.2	49.2	38.8	41.2	30.1	34.2	26.6	26.6	19.4	19.4	-	11.8	11.4
29	-	42.2	39.7	41.2	39.5	38.8	41.2	28.3	33.0	26.6	26.6	19.4	19.4	14.5	-	9.2
33	-	32.7	30.1	37.1	30.1	35.8	34.5	25.6	31.1	26.1	26.6	19.4	19.3	14.5	-	6.9
39	-	23.2	20.8	27.4	20.8	26.1	25.0	22.6	26.3	23.5	25.6	19.4	18.9	14.5	-	4.1
46	-	-	14.0	20.0	13.8	18.9	17.8	20.0	19.1	20.0	18.9	17.6	18.2	14.3	-	-
52	-	-	9.8	16.1	9.6	14.6	13.9	16.8	15.1	15.7	14.6	15.5	15.2	13.9	-	-
59	-	-	6.6	12.3	6.2	11.2	10.1	13.0	11.4	12.1	10.8	12.3	11.7	11.7	-	-
65	-	-	-	-	4.1	8.6	7.7	10.8	9.0	9.9	8.6	9.9	9.2	9.2	-	-
72	-	-	-	-	-	-	5.5	8.4	6.8	7.5	6.4	7.5	6.8	6.8	-	-
79	-	-	-	-	-	-	3.9	6.7	5.0	5.6	4.5	5.6	5.2	5.2	-	-
85	-	-	-	-	-	-	2.7	5.5	3.5	4.6	3.3	4.6	4.0	4.0	-	-
92	-	-	-	-	-	-	-	-	2.6	3.2	2.1	3.2	2.6	2.6	-	-
98	-	-	-	-	-	-	-	-	1.8	2.4	-	2.4	1.8	1.8	-	-
105	-	-	-	-	-	-	-	-	-	1.7	-	1.7	-	-	-	-


Boom extension sequence %

Tele 1	0	0	67	0	80	36	67	0	67	40	90	67	90	100	0	0
Tele 2	0	67	67	34	100	36	67	67	67	74	90	67	90	100	0	67
Tele 3	0	0	0	34	0	36	42	67	67	74	74	90	90	100	0	0
Tele 4	0	0	0	34	0	36	42	67	67	74	74	90	90	100	0	0

*) over rear

STERLING CRANE

Lifting capacities main boom in 1,000 lb


39,700 lb		 25' 3" x 14' 9" 360°												85%	
Radius		Main Boom (ft)													
ft		35.8 ft	52.8 ft	70.2 ft	70.5 ft	82.0 ft	82.0 ft	102.4 ft	104.3 ft	121.7 ft	122.1 ft	138.8 ft	139.4 ft	151.3 ft	164.0 ft
ft		1,000 lb													
10	148.9	-	-	-	-	-	-	-	-	-	-	-	-	-	-
11	139.9	121.2	-	-	-	-	-	-	-	-	-	-	-	-	-
13	124.1	121.2	97.3	41.2	-	-	-	-	-	-	-	-	-	-	-
15	110.6	109.7	91.2	41.2	72.7	38.8	-	-	-	-	-	-	-	-	-
16	100.4	99.4	87.5	41.2	72.7	38.8	41.2	36.5	-	-	-	-	-	-	-
19	74.0	73.2	69.4	41.2	66.4	38.8	41.2	35.1	36.5	26.6	-	-	-	-	-
23	51.7	51.0	48.8	41.2	48.6	38.8	41.2	32.3	35.6	26.6	26.6	19.4	-	-	-
26	42.2	41.5	39.3	41.2	39.3	38.8	41.2	30.1	34.2	26.6	26.6	19.4	19.4	-	-
29	-	34.4	32.4	37.7	32.4	36.3	35.8	28.3	33.0	26.6	26.6	19.4	19.4	14.5	-
33	-	27.7	25.7	31.0	25.5	29.7	29.0	25.6	30.4	26.1	26.5	19.4	19.3	14.5	-
39	-	20.7	18.9	24.0	18.9	22.7	22.0	22.6	22.9	23.5	22.5	19.4	18.9	14.5	-
46	-	-	13.6	18.2	13.1	17.1	16.4	18.9	17.3	18.2	17.1	17.6	17.6	14.3	-
52	-	-	10.4	14.8	10.1	13.9	13.0	15.4	14.1	14.6	13.9	14.7	14.3	13.9	-
59	-	-	7.5	11.9	7.2	10.8	10.1	12.3	11.2	11.7	10.8	11.7	11.2	11.2	-
65	-	-	-	-	5.2	9.0	8.1	10.5	9.2	9.6	9.0	9.8	9.2	9.4	-
72	-	-	-	-	-	-	6.6	8.4	7.3	7.7	7.1	7.9	7.3	7.3	-
79	-	-	-	-	-	-	5.0	7.2	5.6	6.5	5.4	6.5	6.1	6.1	-
85	-	-	-	-	-	-	4.0	6.2	4.8	5.3	4.4	5.3	4.9	4.9	-
92	-	-	-	-	-	-	-	-	3.5	4.3	3.2	4.3	3.5	3.5	-
98	-	-	-	-	-	-	-	-	2.7	3.3	2.2	3.3	2.7	2.7	-
105	-	-	-	-	-	-	-	-	-	2.6	-	2.4	-	-	-
106	-	-	-	-	-	-	-	-	-	-	-	1.8	-	-	-

Boom extension sequence %

Tele 1	0	0	67	0	80	36	67	0	67	40	90	67	90	100	
Tele 2	0	67	67	34	100	36	67	67	67	74	90	67	90	100	
Tele 3	0	0	0	34	0	36	42	67	67	74	74	90	90	100	
Tele 4	0	0	0	34	0	36	42	67	67	74	74	90	90	100	

STERLING CRANE

Lifting capacities main boom in 1,000 lb


17,650 lb		 25' 3" x 14' 9" 360°												85%	
Radius		Main Boom (ft)													
ft		35.8 ft	52.8 ft	70.2 ft	70.5 ft	82.0 ft	82.0 ft	102.4 ft	104.3 ft	121.7 ft	122.1 ft	138.8 ft	139.4 ft	151.3 ft	164.0 ft
ft		1,000 lb													
10	144.1	-	-	-	-	-	-	-	-	-	-	-	-	-	-
11	135.7	125.2	-	-	-	-	-	-	-	-	-	-	-	-	-
13	110.4	108.6	98.4	41.2	-	-	-	-	-	-	-	-	-	-	-
15	80.0	79.1	75.7	41.2	71.2	38.8	-	-	-	-	-	-	-	-	-
16	69.8	69.1	65.9	41.2	64.6	38.8	41.2	36.5	-	-	-	-	-	-	-
19	50.0	49.3	46.7	41.2	46.6	38.8	41.2	35.1	36.5	26.6	-	-	-	-	-
23	34.3	33.6	31.2	38.0	31.2	36.5	35.6	32.3	35.6	26.6	26.6	19.4	-	-	-
26	27.4	26.8	24.5	30.5	24.5	29.4	28.7	30.1	29.8	26.6	26.6	19.4	19.4	-	-
29	-	21.7	19.7	25.5	19.7	24.4	23.4	26.4	24.6	25.0	24.0	19.4	19.4	14.5	-
33	-	16.8	14.8	20.5	14.8	19.2	18.5	21.2	19.4	20.5	19.2	19.2	19.2	14.5	-
39	-	11.9	10.2	15.1	10.0	14.2	13.3	15.7	14.4	15.1	14.2	15.0	14.6	14.3	-
46	-	-	6.5	11.2	6.3	10.1	9.4	11.8	10.3	11.2	10.1	11.2	10.3	10.3	-
52	-	-	3.7	8.5	3.5	7.6	7.0	9.4	7.9	8.5	7.6	8.5	8.1	8.1	-
59	-	-	1.5	6.6	1.3	5.5	4.8	7.2	5.7	6.4	5.5	6.6	5.7	5.7	-
65	-	-	-	-	-	4.1	3.2	5.6	4.3	4.9	4.1	5.0	4.5	4.3	-
72	-	-	-	-	-	-	-	4.4	2.6	3.3	2.4	3.5	2.9	2.6	-
79	-	-	-	-	-	-	-	3.0	-	2.1	-	2.1	-	-	-
85	-	-	-	-	-	-	-	2.2	-	-	-	-	-	-	-

Boom extension sequence %

	35.8 ft	52.8 ft	70.2 ft	70.5 ft	82.0 ft	82.0 ft	102.4 ft	104.3 ft	121.7 ft	122.1 ft	138.8 ft	139.4 ft	151.3 ft	164.0 ft
Tele 1	0	0	67	0	80	36	67	0	67	40	90	67	90	100
Tele 2	0	67	67	34	100	36	67	67	67	74	90	67	90	100
Tele 3	0	0	0	34	0	36	42	67	67	74	74	90	90	100
Tele 4	0	0	0	34	0	36	42	67	67	74	74	90	90	100

STERLING CRANE

Lifting capacities main boom in 1,000 lb

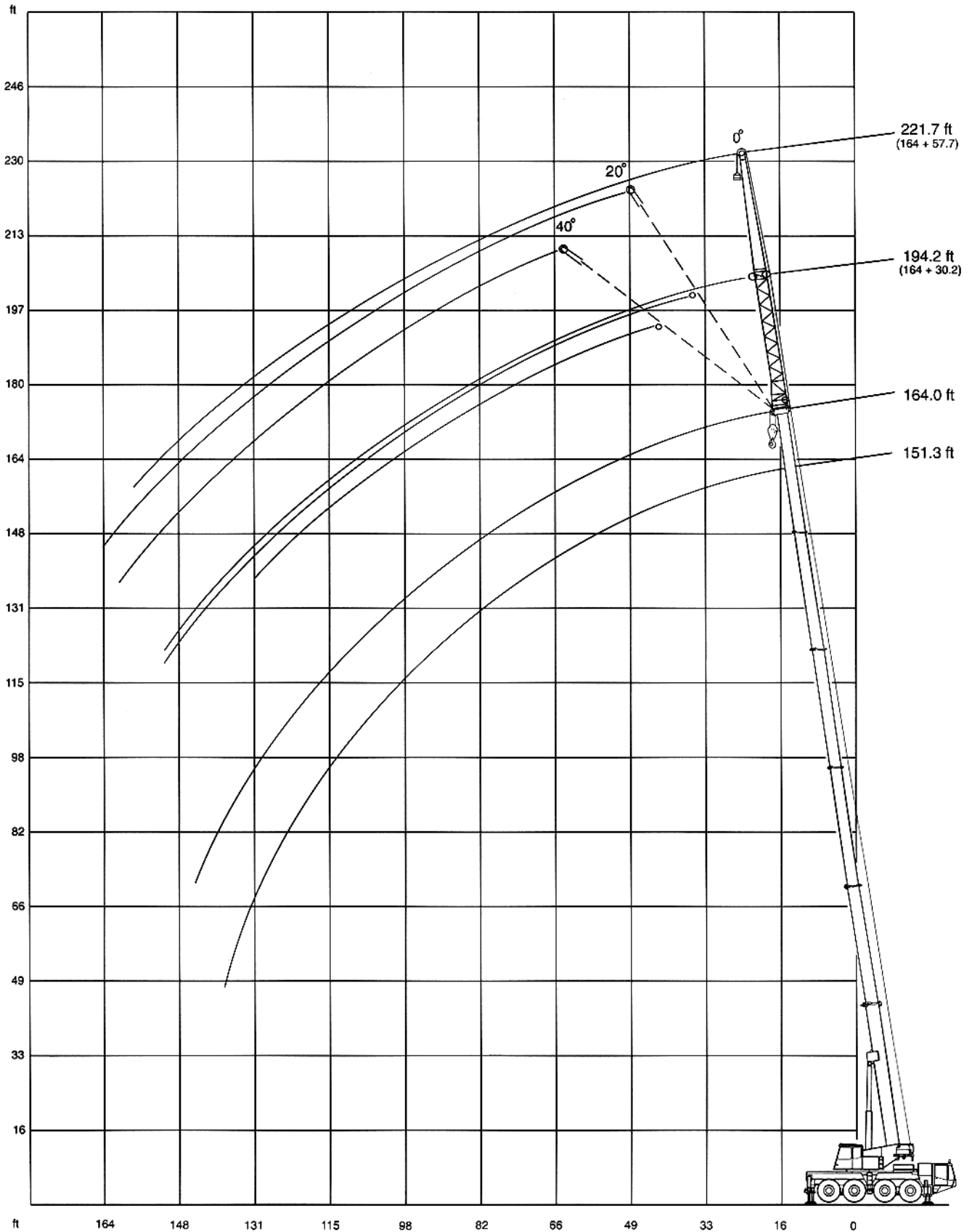
11,050 lb		 25' 3" x 14' 9"												360°		85%	
Radius		Main Boom (ft)															
ft		35.8 ft	52.8 ft	70.2 ft	70.5 ft	82.0 ft	82.0 ft	102.4 ft	104.3 ft	121.7 ft	122.1 ft	138.8 ft	139.4 ft	151.3 ft	164.0 ft		
ft		1,000 lb															
10	143.0	-	-	-	-	-	-	-	-	-	-	-	-	-	-		
11	134.7	129.3	-	-	-	-	-	-	-	-	-	-	-	-	-		
13	97.3	95.7	90.9	41.2	-	41.2	-	-	-	-	-	-	-	-	-		
15	69.5	68.4	65.2	41.2	64.9	38.8	-	-	-	-	-	-	-	-	-		
16	60.6	59.5	56.6	41.2	56.3	38.8	41.2	36.5	-	-	-	-	-	-	-		
19	42.9	42.2	39.7	41.2	39.4	38.8	41.0	35.1	37.2	26.6	-	-	-	-	-		
23	29.0	28.3	26.1	32.9	26.1	31.4	30.5	32.3	31.8	26.6	26.6	19.4	-	-	-		
26	22.9	22.3	20.3	26.5	20.1	25.0	24.3	27.3	25.4	26.0	24.8	19.4	19.4	-	-		
29	-	17.9	15.9	21.9	15.9	20.4	19.7	22.8	20.8	21.7	20.6	19.4	19.4	14.5	-		
33	-	13.7	11.7	17.2	11.7	16.1	15.2	18.1	16.3	17.2	16.1	17.2	16.6	14.4	-		
39	-	9.5	7.5	12.6	7.5	11.5	10.6	13.3	11.9	12.6	11.7	12.6	11.9	11.8	-		
46	-	-	3.9	9.0	3.4	7.9	7.2	9.6	8.1	9.0	7.9	9.0	8.3	8.1	-		
52	-	-	-	7.0	-	5.6	5.2	7.4	5.9	6.7	5.6	6.7	6.3	5.7	-		
59	-	-	-	4.8	-	3.9	2.8	5.5	4.2	4.8	3.5	4.8	4.2	3.9	-		
65	-	-	-	-	-	2.3	-	4.3	2.5	3.4	2.3	3.4	2.7	2.3	-		
72	-	-	-	-	-	-	-	2.9	-	2.0	-	2.0	-	-	-		
79	-	-	-	-	-	-	-	1.9	-	-	-	-	-	-	-		

Boom extension sequence %

Tele 1	0	0	67	0	80	36	67	0	67	40	90	67	90	100
Tele 2	0	67	67	34	100	36	67	67	67	74	90	67	90	100
Tele 3	0	0	0	34	0	36	42	67	67	74	74	90	90	100
Tele 4	0	0	0	34	0	36	42	67	67	74	74	90	90	100

STERLING CRANE


Working Range Main Boom Extension





STERLING CRANE

Lifting capacities main boom extension in 1,000 lb

Main boom: 151.3 ft

39,700 lb				25' 3" x 23'		360°		85%	
Radius		Extension							
		30.2 ft			57.7 ft				
		0°	20°	40°	0°	20°	40°		
ft		1,000 lb							
33	9.2	-	-	-	-	-	-		
39	9.2	-	-	3.5	-	-	-		
46	9.2	8.1	-	3.5	-	-	-		
52	9.2	8.1	7.2	3.5	-	-	-		
59	9.0	7.7	7.0	3.5	3.3	-	-		
65	8.8	7.5	6.8	3.5	3.3	-	-		
72	8.1	7.2	6.6	3.3	3.3	-	-		
79	7.6	6.8	6.3	3.2	3.3	2.8	-		
85	7.2	6.6	6.1	3.0	3.3	2.6	-		
92	7.0	6.1	5.7	3.0	3.0	2.6	-		
98	6.6	5.5	5.5	3.0	3.0	2.6	-		
105	6.1	5.2	5.2	2.8	2.8	2.6	-		
111	5.7	5.0	4.8	2.8	2.8	2.6	-		
118	5.0	4.8	4.6	2.6	2.8	2.4	-		
124	4.2	4.6	4.4	2.6	2.6	2.4	-		
131	3.3	3.9	4.1	2.6	2.6	2.4	-		
138	2.6	3.0	-	2.4	2.6	2.4	-		
144	2.2	2.4	-	2.4	2.4	2.4	-		
151	1.7	1.9	-	2.1	2.4	2.4	-		
157	-	-	-	1.7	2.2	2.4	-		
164	-	-	-	-	1.7	-	-		


17,650 lb				25' 3" x 23'		360°		85%	
Radius		Extension							
		30.2 ft			57.7 ft				
		0°	20°	40°	0°	20°	40°		
ft		1,000 lb							
33	9.2	-	-	-	-	-	-		
39	9.2	-	-	3.5	-	-	-		
46	9.2	8.1	-	3.5	-	-	-		
52	9.2	8.1	7.2	3.5	-	-	-		
59	9.0	7.7	7.0	3.5	3.3	-	-		
65	8.8	7.5	6.8	3.5	3.3	-	-		
72	8.1	7.2	6.6	3.3	3.3	-	-		
79	7.6	6.8	6.3	3.2	3.3	2.8	-		
85	6.2	6.6	6.1	3.0	3.3	2.6	-		
92	4.8	5.4	5.7	3.0	3.0	2.6	-		
98	3.6	4.4	5.1	3.0	3.0	2.6	-		
105	2.6	3.3	3.9	2.8	2.8	2.6	-		
111	2.0	2.4	2.9	2.4	2.8	2.6	-		
118	-	1.7	2.2	1.7	2.8	2.4	-		
124	-	-	1.6	-	2.2	2.4	-		
131	-	-	-	-	1.5	2.2	-		
138	-	-	-	-	-	1.5	-		


11,050 lb				25' 3" x 23'		360°		85%	
Radius		Extension							
		30.2 ft			57.7 ft				
		0°	20°	40°	0°	20°	40°		
ft		1,000 lb							
33	9.2	-	-	-	-	-	-		
39	9.2	-	-	3.5	-	-	-		
46	9.2	8.1	-	3.5	-	-	-		
52	9.2	8.1	7.2	3.5	-	-	-		
59	9.0	7.7	7.0	3.5	3.3	-	-		
65	8.8	7.5	6.8	3.5	3.3	-	-		
72	7.5	7.2	6.6	3.3	3.3	-	-		
79	5.6	6.7	6.3	3.2	3.3	2.8	-		
85	4.4	5.5	6.1	3.0	3.3	2.6	-		
92	3.2	4.1	4.8	3.0	3.0	2.6	-		
98	2.2	3.1	3.6	2.8	3.0	2.6	-		
105	1.5	2.2	2.6	2.2	2.8	2.6	-		
111	-	1.5	1.8	1.5	2.6	2.6	-		
118	-	-	-	-	1.9	2.4	-		
124	-	-	-	-	-	2.0	-		


STERLING CRANE

Lifting capacities main boom extension in 1,000

Main boom: 164.0 ft

39,700 lb				25' 3" x 23'		360°		85%	
Radius		Extension							
		30.2 ft			57.7 ft				
		0°	20°	40°	0°	20°	40°		
ft		1,000 lb							
39	6.8	-	-	-	-	-	-		
46	6.8	6.8	-	2.4	-	-	-		
52	6.8	6.8	6.4	2.4	-	-	-		
59	6.8	6.6	6.1	2.4	-	-	-		
65	6.6	6.2	5.7	2.4	2.4	-	-		
72	6.1	5.7	5.5	2.4	2.4	-	-		
79	5.7	5.4	5.0	2.4	2.4	2.4	-		
85	5.3	5.0	4.8	2.4	2.4	2.4	-		
92	5.0	4.8	4.6	2.4	2.4	2.4	-		
98	4.8	4.6	4.4	2.2	2.4	2.4	-		
105	4.6	4.4	4.1	2.2	2.4	2.4	-		
111	4.4	4.2	3.9	2.0	2.2	2.4	-		
118	4.1	3.9	3.5	1.9	2.2	2.2	-		
124	3.9	3.5	3.5	1.9	2.0	2.2	-		
131	3.3	3.5	3.3	1.9	1.9	1.9	-		
138	2.6	2.8	-	1.7	1.9	1.9	-		
144	2.0	2.4	-	1.7	1.9	1.9	-		
151	1.5	1.7	-	1.7	1.7	1.7	-		
157	-	-	-	1.5	1.7	1.7	-		
164	-	-	-	-	1.5	-	-		


17,650 lb				25' 3" x 23'		360°		85%	
Radius		Extension							
		30.2 ft			57.7 ft				
		0°	20°	40°	0°	20°	40°		
ft		1,000 lb							
39	6.8	-	-	-	-	-	-		
46	6.8	6.8	-	2.4	-	-	-		
52	6.8	6.8	6.4	2.4	-	-	-		
59	6.8	6.6	6.1	2.4	-	-	-		
65	6.6	6.2	5.7	2.4	2.4	-	-		
72	6.1	5.7	5.5	2.4	2.4	-	-		
79	5.7	5.4	5.0	2.4	2.4	2.4	-		
85	5.3	5.0	4.8	2.4	2.4	2.4	-		
92	4.6	4.8	4.6	2.4	2.4	2.4	-		
98	3.5	4.4	4.4	2.2	2.4	2.4	-		
105	2.6	3.3	3.9	2.2	2.4	2.4	-		
111	1.8	2.4	2.9	2.0	2.2	2.4	-		
118	-	1.7	2.2	1.7	2.2	2.2	-		
124	-	-	-	-	2.0	2.2	-		
131	-	-	-	-	1.5	1.9	-		
138	-	-	-	-	-	1.5	-		


11,050 lb				25' 3" x 23'		360°		85%	
Radius		Extension							
		30.2 ft			57.7 ft				
		0°	20°	40°	0°	20°	40°		
ft		1,000 lb							
39	6.8	-	-	-	-	-	-		
46	6.8	6.8	-	2.4	-	-	-		
52	6.8	6.8	6.4	2.4	-	-	-		
59	6.8	6.6	6.1	2.4	-	-	-		
65	6.6	6.2	5.7	2.4	2.4	-	-		
72	6.1	5.7	5.5	2.4	2.4	-	-		
79	5.4	5.4	5.0	2.4	2.4	2.4	-		
85	4.2	5.0	4.8	2.4	2.4	2.4	-		
92	3.0	4.1	4.6	2.4	2.4	2.4	-		
98	2.2	2.9	3.5	2.2	2.4	2.4	-		
105	-	2.2	2.6	1.7	2.4	2.4	-		
111	-	-	1.8	-	2.2	2.4	-		
118	-	-	-	-	1.5	2.2	-		
124	-	-	-	-	-	2.0	-		

STERLING CRANE


Lifting capacities main boom extension in 1,000


Main boom: 151.3 ft

39,700 lb		 25' 3" x 14' 9" 360° 85%					
		Extension					
Radius	30.2 ft			57.7 ft			
	0°	20°	40°	0°	20°	40°	
ft	1,000 lb						
33	9.2	-	-	-	-	-	
39	9.2	-	-	3.5	-	-	
46	9.2	8.1	-	3.5	-	-	
52	9.2	8.1	7.2	3.5	-	-	
59	9.0	7.7	7.0	3.5	3.3	-	
65	8.8	7.5	6.8	3.5	3.3	-	
72	7.7	7.2	6.6	3.3	3.3	-	
79	6.3	6.8	6.3	3.2	3.3	2.8	
85	5.3	6.2	6.1	3.0	3.3	2.6	
92	4.1	4.8	5.2	3.0	3.0	2.6	
98	3.1	4.0	4.4	3.0	3.0	2.6	
105	2.2	2.8	3.3	2.8	2.8	2.6	
111	1.5	2.2	2.4	2.2	2.8	2.6	
118	-	1.5	1.7	1.5	2.4	2.4	
124	-	-	-	-	2.0	2.4	
131	-	-	-	-	-	2.0	

17,650 lb		 25' 3" x 14' 9" 360° 85%					
		Extension					
Radius	30.2 ft			57.7 ft			
	0°	20°	40°	0°	20°	40°	
ft	1,000 lb						
33	9.2	-	-	-	-	-	
39	9.2	-	-	3.5	-	-	
46	9.2	8.1	-	3.5	-	-	
52	8.4	8.1	7.2	3.5	-	-	
59	6.4	7.5	7.0	3.5	3.3	-	
65	4.7	5.8	6.8	3.5	3.3	-	
72	3.1	4.4	5.3	3.3	3.3	-	
79	1.9	3.0	3.9	2.1	3.2	2.8	
85	-	2.0	2.7	1.5	3.0	2.6	
92	-	-	1.7	-	2.1	2.6	
98	-	-	-	-	1.5	2.6	
105	-	-	-	-	-	1.7	

Main boom: 164.0 ft

39,750 lb		 25' 3" x 14' 9" 360° 85%					
		Extension					
Radius	30.2 ft			57.7 ft			
	0°	20°	40°	0°	20°	40°	
ft	1,000 lb						
39	6.8	-	-	-	-	-	
46	6.8	6.8	-	2.4	-	-	
52	6.8	6.8	6.4	2.4	-	-	
59	6.8	6.6	6.1	2.4	-	-	
65	6.6	6.2	5.7	2.4	2.4	-	
72	6.1	5.7	5.5	2.4	2.4	-	
79	5.7	5.4	5.0	2.4	2.4	2.4	
85	5.1	5.0	4.8	2.4	2.4	2.4	
92	4.1	4.8	4.6	2.4	2.4	2.4	
98	3.1	4.0	4.4	2.2	2.4	2.4	
105	2.2	2.8	3.3	2.2	2.4	2.4	
111	1.5	2.2	2.4	2.0	2.2	2.4	
118	-	1.5	1.7	-	2.2	2.2	
124	-	-	-	-	1.8	2.2	
131	-	-	-	-	-	1.9	

17,650 lb		 25' 3" x 14' 9" 360° 85%					
		Extension					
Radius	30.2 ft			57.7 ft			
	0°	20°	40°	0°	20°	40°	
ft	1,000 lb						
39	6.8	-	-	-	-	-	
46	6.8	6.8	-	2.4	-	-	
52	6.8	6.8	6.4	2.4	-	-	
59	5.7	6.6	6.1	2.4	-	-	
65	4.3	5.6	5.7	2.4	2.4	-	
72	2.6	4.0	5.0	2.4	2.4	-	
79	1.7	2.6	3.4	1.9	2.4	2.4	
85	-	1.8	2.4	-	2.4	2.4	
92	-	-	1.5	-	1.9	2.4	
98	-	-	-	-	-	2.4	
105	-	-	-	-	-	1.5	

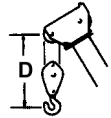
STERLING CRANE

Working Speeds (infinitely variable)

Mechanisms	Normal speed	High speed	Max. permissible Line pull (1)	Length of hoist rope
Hoist I	174 ft/min	361 ft/min	13,200 lb	689 ft
Hoist II	174 ft/min	361 ft/min	13,200 lb	689 ft
Slewing	max. 2 rpm			
Telescoping speed	35.8 ft – 164.0 ft: 110 s			
Boom elevation	-1.8° - +81.5°: 63 s			

Carrier Performance

Travel speeds	
Forward	0.. 45 mph
Reverse	0..7.5 mph
Gradeability in travel order	max. 50%
Ground clearance	1' 1"



Hook Block/Single line hook

Type	Possible load (2)	Number of sheaves	Number of lines	Weight	"D"
100(*)	176,000 lb	7	14	1,650 lb	6' 7"
80(*)	145,200 lb	5	11	1,430 lb	6' 7"
50	92,400 lb	3	7	1,210 lb	5' 11"
20	39,600 lb	1	3	770 lb	5' 11"
6.3	13,200 lb	Single line hook		374 lb	5' 7"

(*) heavy-lift attachment is required, without heavy-lift attachment: capacity 132,000 lb (10 lines)

(1) varies depending on national regulations

(2) varies depending on line pull permissible under different national regulations

Notes on Crane Operation

AC 205

"Before commencing operations, the crane driver must have read the operating instructions".

1.) General notes

- The crane driver must be certain that the values for load and radius which are given in the load capacity table are in no way exceeded.
- The loads are given in metric tons.
- The loads given in the load capacity table include the hook block and lifting tackle
Load capacity = load + hook block + lifting tackle
- Weights of the hook blocks:

Hook block type 80	= 650 kg
Hook block type 50	= 550 kg
Hook block type 20	= 350 kg
Single line hook 6,3	= 170 kg
- Max. permissible traction/fall
Hoist I and II: 60 kN
- The radius of the crane is measured from the slewing centre.
- Two hook operation is not monitored by the load limit device.
Two hook operation can lead to overloading and tipping of the crane.
- Before operations are commenced, the load limit device must be set to the current configuration of the crane.

2.) Working with the crane supported on outriggers

- Before the crane is supported on outriggers, the suspension on all axles must be locked.
- When the crane is supported on outriggers, all wheels must be lifted from the ground completely.
- Only the values given in the load capacity table are permissible for the outrigger support area.
- The loads apply to the crane when it is supported on outriggers in a horizontal position. Before commencing work, position the crane horizontally and monitor constantly during operation.
- Even without load, the boom may only be moved within the areas for which load values are specified.

STERLING CRANE

- Notes on support pressures and ground compression in the operating instructions for the crane
- When the main boom extension is folded alongside the main boom, the load capacities on the main boom are reduced as shown in the following table:

Main boom	Reduction MBE 9.2 m	Reduction MBE 17.6 m
10,9 m	400 kg	550 kg
16,1 m	250 kg	380 kg
21,4 m / 21,5 m	200 kg	280 kg
25,0 m	170 kg	250 kg
31,2 m / 31,8 m	130 kg	200 kg
37,1 m / 37,2 m	110 kg	170 kg
42,3 m / 42,5 m	100 kg	150 kg
46,1 m	100 kg	130 kg
50,0 m	100 kg	120 kg

3.) Operating free-standing, driving the crane with load

- When the crane is not supported on outriggers ("free-standing on wheels") the main boom must not be slewed outside of the longitudinal axis of the vehicle. CRANE MAY OVERTURN !!!
- The load must be taken up when the automobile crane is supported on outriggers. Then swing the superstructure in the longitudinal direction with the main boom to the rear and lower the load to the ground. Engage the mechanical superstructure locking device.
- The axle suspension of the crane must be fully retracted and the suspension then locked.
- Set the load limit device to "mobile" mode using the "operating mode preselect" button. Indicator lights up (mobile).
The support plates can now be retracted so that they are located just above the ground. Take up the load again and hold just above the ground. Ensure that the load and support plates remain clear of the ground when the crane is driven.

- The load forces listed under "free-standing" in the load capacity table (observe the corresponding symbol) must not be exceeded, even when there is no obvious danger of the crane overturning (observe permissible tyre and axle loading).

Tyres	Axle load	Tyre pressure
14.00 R 25	up to 12 t	10 bar
	over 12 t	10 bar
16.00 R 25	up to 12 t	9 bar
	over 12 t	10 bar
20.50 R 25	up to 12 t	7 bar
	over 12 t	7 bar

- The load must not be allowed to swing when the crane is driven. If necessary secure with rope.
- Maximum speed 2 km/h (walking speed)

4.) Temperature operating limits

Following the instructions given in the operating or lubrication and maintenance instructions, the crane can be operated at ambient temperatures of between -20° C and + 40° C.

5.) Wind speeds / dynamic pressure

A surface area exposed to the wind of 1.0 m²/t is assumed for the wind speeds of 9.8 m/s (dynamic pressure 60 N/m²) accounted for in the load capacity tables.

With the exception of the fly jib, wind speeds of up to 15 m/s (dynamic pressure 150 N/m²) are permissible, if the surface area of the load exposed to the wind or the load capacity is reduced corresponding to the values given above.

For example: load 20 t

Load surface area exposed to wind at 60 N/m² = 20 m²
 Load surface area exposed to wind at 150 N/m² = 8 m²

At wind speeds > 20 m/s, the main boom must be retracted and the fly jib lowered.

Notes to Lifting Capacity

Lifting capacities do not exceed 85% of tipping load.

Weight of hook blocks and slings are part of the load, and are to be deducted from the capacity ratings.

Crane operation is permissible up to a wind speed of 32 ft/s

Consult operation manual for further details on wind speed.

All capacities above the parting line are based on structural strength. Capacities below the parting line are based on machine stability.

Crane operation subject to computer charts, only!

For crane operation consult operation manual first!

