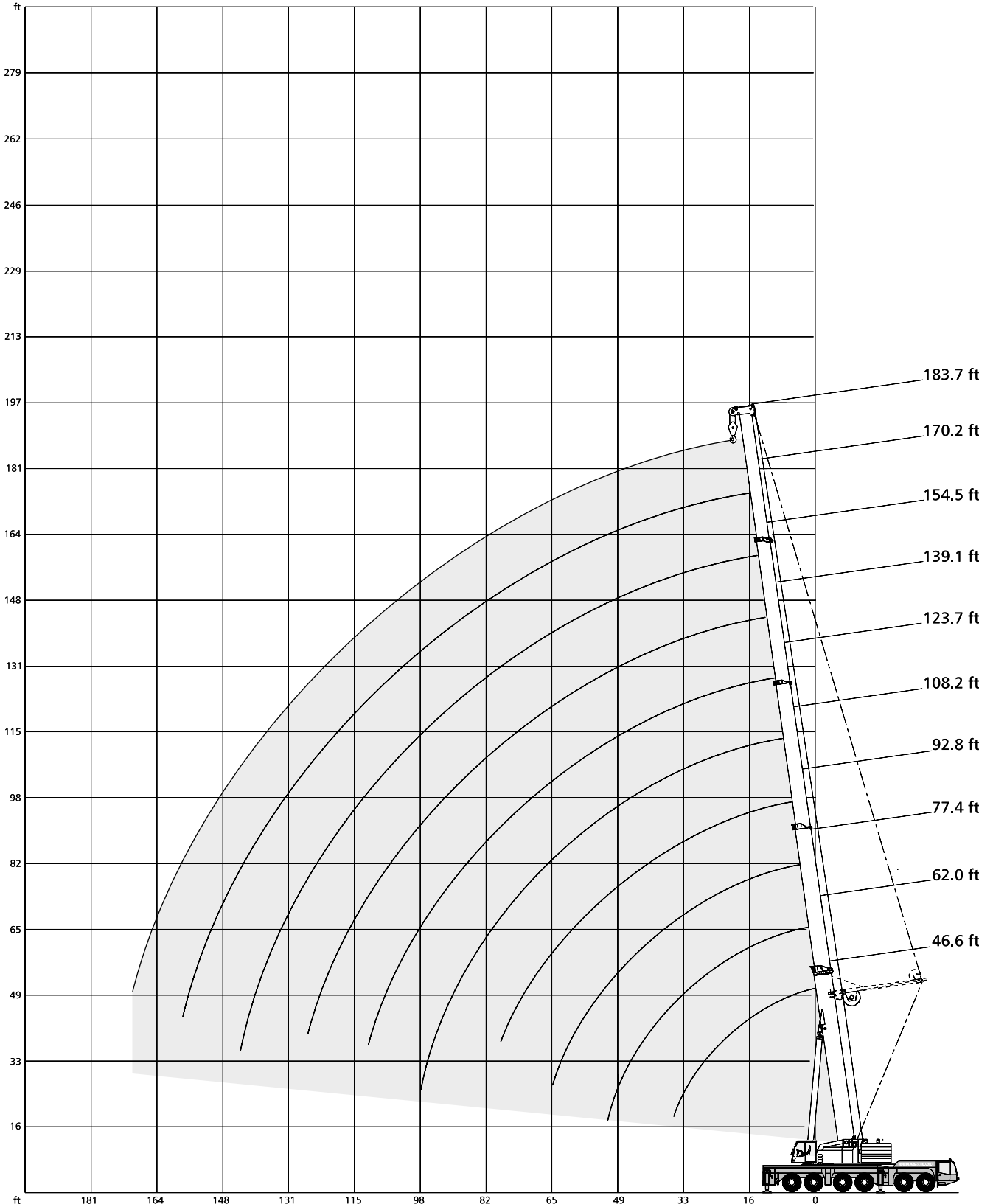




LIFTING CHARTS - All Terrain Cranes

DEMAG MODEL AC 350 - 400 TON CAPACITY

Working ranges main boom with / without SSL



Lifting capacities main boom

313,100 lb   **360°** **85%**

Main boom												
Radius	ft	46.6	62.0	77.4	92.9	108.3	123.7	139.1	154.5	170.3	183.7	Radius
	ft	1,000 lb										ft
19		358.3*	358.3*	329.0*	277.4	235.0	-	-	-	-	-	19
23		312.7*	312.7*	312.7*	266.6	226.9	182.9	154.2	-	-	-	23
26		284.5*	284.5*	284.5*	254.5	216.8	176.8	148.2	128.2	-	-	26
29		261.8	261.1	261.8	244.2	206.8	168.9	142.1	124.1	108.6	-	29
33		233.0	234.9	234.8	228.5	193.3	158.2	134.1	118.7	103.8	88.0	33
39		-	204.8	202.6	204.3	173.2	142.0	124.0	110.7	96.9	83.1	39
46		-	173.6	171.7	173.9	151.9	123.3	110.1	101.5	89.4	77.5	46
52		-	129.3	151.5	151.7	137.8	111.2	100.4	93.8	83.3	72.9	52
59		-	-	130.2	132.4	123.5	98.6	90.2	85.3	76.7	67.7	59
65		-	-	107.4	118.3	113.4	89.3	82.9	78.7	71.7	63.4	65
72		-	-	-	106.3	105.7	80.2	75.3	71.3	66.2	58.9	72
79		-	-	-	85.4	97.5	72.5	68.7	65.0	61.5	54.7	79
85		-	-	-	-	89.4	67.0	63.5	60.2	57.7	51.5	85
92		-	-	-	-	74.7	61.6	57.8	55.0	53.5	48.2	92
98		-	-	-	-	55.1	57.6	53.6	51.2	50.2	45.6	98
105		-	-	-	-	-	53.1	49.3	47.6	46.7	42.7	105
111		-	-	-	-	-	48.5	45.9	44.3	43.7	40.3	111
118		-	-	-	-	-	-	42.6	41.4	40.6	37.9	118
124		-	-	-	-	-	-	39.9	39.0	38.1	35.9	124
131		-	-	-	-	-	-	-	36.4	35.5	33.8	131
138		-	-	-	-	-	-	-	33.8	33.0	31.6	138
144		-	-	-	-	-	-	-	-	31.1	30.0	144
151		-	-	-	-	-	-	-	-	29.3	28.4	151
157		-	-	-	-	-	-	-	-	-	26.8	157
164		-	-	-	-	-	-	-	-	-	25.1	164

269,000 lb   **360°** **85%**

Main boom													
Radius	ft	46.6 ¹⁾	46.6	62.0	77.4	92.9	108.3	123.7	139.1	154.5	170.3	183.7	Radius
	ft	1,000 lb										ft	
9.8		771.7*	-	-	-	-	-	-	-	-	-	-	10
10		747.7*	518.9	385.5*	352.5*	-	-	-	-	-	-	-	10
11		595.9*	496.0	384.2*	351.1*	-	-	-	-	-	-	-	11
13		491.9*	452.4	379.5*	348.4*	286.5	-	-	-	-	-	-	13
15		459.1*	414.7	373.8*	343.2*	286.2	-	-	-	-	-	-	15
16		443.0*	397.2	369.8*	340.5*	284.9	241.1	-	-	-	-	-	16
19		396.4*	355.3	348.9*	329.0*	277.4	235.0	190.9	-	-	-	-	19
23		336.8*	308.3	306.1*	308.3*	266.6	226.9	182.9	154.2	-	-	-	23
26		298.5*	280.1	279.9*	280.1*	254.5	216.8	176.8	148.2	128.2	-	-	26
29		267.6*	257.4	257.4	257.4	244.2	206.8	168.9	142.1	124.1	108.6	-	29
33		233.2*	228.9	230.4	230.3	228.2	193.3	158.2	134.1	118.7	103.8	88.0	33
39		-	-	196.2	196.0	196.0	173.2	142.0	124.0	110.7	96.9	83.1	39
46		-	-	164.9	162.9	165.1	151.9	123.3	110.1	101.5	89.4	77.5	46
52		-	-	128.6	142.7	144.9	137.8	111.2	100.4	93.8	83.3	72.9	52
59		-	-	-	123.6	125.8	123.5	98.6	90.2	85.3	76.7	67.7	59
65		-	-	-	107.4	111.6	113.4	89.3	82.9	78.7	71.7	63.4	65
72		-	-	-	-	100.3	102.3	80.2	75.3	71.3	66.2	58.9	72
79		-	-	-	-	85.6	91.5	72.5	68.7	65.0	61.5	54.7	79
85		-	-	-	-	-	83.5	67.0	63.5	60.2	57.7	51.5	85
92		-	-	-	-	-	74.7	61.6	57.8	55.0	53.5	48.2	92
98		-	-	-	-	-	55.1	57.6	53.6	51.2	50.2	45.6	98
105		-	-	-	-	-	-	53.1	49.3	47.6	46.7	42.7	105
111		-	-	-	-	-	-	48.5	45.9	44.3	43.7	40.3	111
118		-	-	-	-	-	-	-	42.6	41.4	40.6	37.9	118
124		-	-	-	-	-	-	-	39.9	39.0	38.1	35.9	124
131		-	-	-	-	-	-	-	-	36.4	35.5	33.8	131
138		-	-	-	-	-	-	-	-	33.8	33.0	31.6	138
144		-	-	-	-	-	-	-	-	-	31.1	30.0	144
151		-	-	-	-	-	-	-	-	-	29.3	28.4	151
157		-	-	-	-	-	-	-	-	-	-	26.8	157
164		-	-	-	-	-	-	-	-	-	-	25.1	164

* with special attachment

¹⁾ only over rear

STERLING CRANE

Lifting capacities main boom

224,900 lb  **360°** **85%**

Main boom

Radius	ft	46.6	62.0	77.4	92.9	108.3	123.7	139.1	154.5	170.3	183.7	Radius
	ft	1,000 lb										ft
10		514.0*	385.5*	352.5*	-	-	-	-	-	-	-	10
11		488.5*	384.2*	351.1*	-	-	-	-	-	-	-	11
13		443.5*	379.5*	348.4*	286.5	-	-	-	-	-	-	13
15		408.1*	373.8*	343.2*	286.2	-	-	-	-	-	-	15
16		390.6*	369.8*	340.5*	284.9	241.1	-	-	-	-	-	16
19		348.7*	343.7*	329.0*	277.4	235.0	190.9	-	-	-	-	19
23		303.9*	301.7*	301.7*	266.6	226.9	182.9	154.2	-	-	-	23
26		275.7*	275.2*	275.5*	254.5	216.8	176.8	148.2	128.2	-	-	26
29		253.0	253.0	251.1	244.2	206.8	168.9	142.1	124.1	108.6	-	29
33		220.6	221.6	221.5	221.5	193.3	158.2	134.1	118.7	103.8	88.0	33
39		-	187.4	185.2	187.3	173.2	142.0	124.0	110.7	96.9	83.1	39
46		-	156.2	154.1	156.3	151.9	123.3	110.1	101.5	89.4	77.5	46
52		-	127.9	135.8	136.1	137.8	111.2	100.4	93.8	83.3	72.9	52
59		-	-	119.1	116.9	119.2	98.6	90.2	85.3	76.7	67.7	59
65		-	-	106.4	104.0	106.6	89.3	82.9	78.7	71.7	63.4	65
72		-	-	-	89.4	92.0	80.2	75.3	71.3	66.2	58.9	72
79		-	-	-	78.0	80.3	72.5	68.7	65.0	61.5	54.7	79
85		-	-	-	-	72.0	67.0	63.5	60.2	57.7	51.5	85
92		-	-	-	-	64.1	61.6	57.8	55.0	53.5	48.2	92
98		-	-	-	-	54.4	56.5	53.6	51.2	50.2	45.6	98
105		-	-	-	-	-	51.1	49.3	47.6	46.7	42.7	105
111		-	-	-	-	-	48.5	45.9	44.3	43.7	40.3	111
118		-	-	-	-	-	-	42.1	41.4	40.6	37.9	118
124		-	-	-	-	-	-	38.7	39.0	38.1	35.9	124
131		-	-	-	-	-	-	-	36.0	35.5	33.8	131
138		-	-	-	-	-	-	-	32.7	33.0	31.6	138
144		-	-	-	-	-	-	-	-	31.1	30.0	144
151		-	-	-	-	-	-	-	-	29.0	28.4	151
157		-	-	-	-	-	-	-	-	-	26.8	157
164		-	-	-	-	-	-	-	-	-	24.9	164
170		-	-	-	-	-	-	-	-	-	-	170

136,700 lb  **360°** **85%**

Main boom

Radius	ft	46.6	62.0	77.4	92.9	108.3	123.7	139.1	154.5	170.3	183.7	Radius
	ft	1,000 lb										ft
10		496.6*	385.5*	352.5*	-	-	-	-	-	-	-	10
11		472.4*	384.2*	351.1*	-	-	-	-	-	-	-	11
13		430.1*	379.5*	348.4*	286.5	-	-	-	-	-	-	13
15		393.3*	373.8*	343.2*	286.2	-	-	-	-	-	-	15
16		378.5*	369.8*	340.5*	284.9	241.1	-	-	-	-	-	16
19		335.9*	335.0*	329.0*	277.4	235.0	190.9	-	-	-	-	19
23		286.2	286.2	286.2	266.6	226.9	182.9	154.2	-	-	-	23
26		253.9	253.9	251.9	252.4	216.8	176.8	148.2	128.2	-	-	26
29		225.4	225.4	223.2	225.4	206.8	168.9	142.1	124.1	108.6	-	29
33		192.8	194.9	195.0	194.9	190.6	158.2	134.1	118.7	103.8	88.0	33
39		-	154.6	158.7	154.6	154.3	142.0	124.0	110.7	96.9	83.1	39
46		-	123.2	121.0	123.2	121.0	116.6	110.0	101.5	89.4	77.5	46
52		-	103.4	100.4	103.4	100.8	98.9	97.1	93.8	83.3	72.9	52
59		-	-	84.5	85.2	82.6	81.4	80.8	80.7	76.7	67.7	59
65		-	-	74.4	73.5	70.8	71.9	69.3	70.3	70.3	63.4	65
72		-	-	-	62.6	59.8	61.1	58.0	59.1	60.8	58.9	72
79		-	-	-	53.6	51.1	53.3	52.9	53.3	51.9	52.4	79
85		-	-	-	-	45.0	47.6	47.8	47.4	45.9	46.1	85
92		-	-	-	-	39.1	42.2	42.2	41.3	39.8	40.0	92
98		-	-	-	-	35.1	39.6	38.8	37.1	35.5	35.7	98
105		-	-	-	-	-	35.7	34.8	33.0	31.3	31.5	105
111		-	-	-	-	-	32.2	31.4	29.4	27.8	28.0	111
118		-	-	-	-	-	-	28.2	26.2	24.5	24.7	118
124		-	-	-	-	-	-	25.6	23.4	21.7	21.9	124
131		-	-	-	-	-	-	-	21.0	19.2	19.4	131
138		-	-	-	-	-	-	-	18.4	16.7	16.9	138
144		-	-	-	-	-	-	-	-	15.0	15.3	144
151		-	-	-	-	-	-	-	-	13.2	13.2	151
157		-	-	-	-	-	-	-	-	-	11.7	157
164		-	-	-	-	-	-	-	-	-	10.3	164

STERLING CRANE

Lifting capacities main boom

92,600 lb



360°

85%

Main boom

Radius	ft	46.6	62.0	77.4	92.9	108.3	123.7	139.1	154.5	170.3	183.7	Radius
ft		1,000 lb										ft
10		488.0*	385.5*	352.5*	-	-	-	-	-	-	-	10
11		465.1*	384.2*	351.1*	-	-	-	-	-	-	-	11
13		421.5*	379.5*	348.4*	286.5	-	-	-	-	-	-	13
15		386.4*	372.8*	343.2*	286.2	-	-	-	-	-	-	15
16		370.2*	364.8*	340.5*	284.9	241.1	-	-	-	-	-	16
19		325.3*	323.1*	318.5*	277.4	235.0	190.9	-	-	-	-	19
23		266.3	266.3	264.1	248.6	226.7	182.9	154.2	-	-	-	23
26		230.0	232.1	223.7	210.3	200.5	176.8	148.2	128.2	-	-	26
29		203.0	203.3	200.4	181.3	174.3	161.5	142.1	124.1	108.6	-	29
33		161.8	161.8	166.2	159.9	148.9	138.0	129.2	118.4	103.8	88.0	33
39		-	126.9	124.4	127.6	118.7	110.4	104.2	100.3	96.9	83.1	39
46		-	97.2	98.7	97.6	93.4	90.8	82.3	82.5	79.2	76.8	46
52		-	78.4	79.8	78.7	81.1	78.3	74.8	72.0	67.1	65.3	52
59		-	-	64.6	66.4	65.3	63.1	65.1	60.2	55.8	54.5	59
65		-	-	56.0	56.5	55.4	55.6	55.2	52.4	48.3	47.2	65
72		-	-	-	47.6	46.3	46.9	46.0	44.0	41.1	40.3	72
79		-	-	-	40.5	39.4	39.9	39.2	37.2	35.2	34.6	79
85		-	-	-	-	34.6	35.0	34.4	32.4	30.6	30.4	85
92		-	-	-	-	30.1	30.3	29.6	27.4	25.7	26.1	92
98		-	-	-	-	28.2	26.9	26.0	24.0	22.2	22.5	98
105		-	-	-	-	-	23.8	22.9	20.7	18.9	19.1	105
111		-	-	-	-	-	20.9	20.1	17.8	16.1	16.3	111
118		-	-	-	-	-	-	17.4	15.4	13.7	13.9	118
124		-	-	-	-	-	-	15.4	13.2	11.4	11.7	124
131		-	-	-	-	-	-	-	11.3	9.5	9.7	131
138		-	-	-	-	-	-	-	9.4	7.6	7.8	138
144		-	-	-	-	-	-	-	-	6.4	6.4	144
151		-	-	-	-	-	-	-	-	5.0	5.0	151
157		-	-	-	-	-	-	-	-	-	4.0	157

48,500 lb



360°

85%

Main boom

Radius	ft	46.6	62.0	77.4	92.9	108.3	123.7	139.1	154.5	170.3	183.7	Radius
ft		1,000 lb										ft
10		481.2*	385.5*	352.5*	-	-	-	-	-	-	-	10
11		457.0*	384.2*	351.1*	-	-	-	-	-	-	-	11
13		414.7*	379.5*	348.4*	286.5	-	-	-	-	-	-	13
15		376.9*	370.9*	342.3*	286.2	-	-	-	-	-	-	15
16		358.1*	354.8*	335.6*	284.9	243.8	-	-	-	-	-	16
19		298.2*	294.2*	264.8*	239.0	217.6	197.4	-	-	-	-	19
23		237.5	222.2	204.6	191.4	169.4	151.8	138.6	-	-	-	23
26		189.1	181.9	168.3	159.1	141.2	131.0	116.4	110.1	-	-	26
29		151.9	155.6	146.4	134.3	125.5	114.9	106.7	99.8	91.4	-	29
33		113.6	122.3	120.2	109.5	106.1	96.8	93.3	84.7	77.0	73.8	33
39		-	87.3	88.8	89.6	83.0	78.9	73.9	67.0	61.1	58.6	39
46		-	62.4	66.6	67.0	66.8	62.0	58.0	52.3	47.5	45.9	46
52		-	49.3	53.1	53.5	54.1	51.5	48.2	43.2	39.0	37.9	52
59		-	-	41.7	42.1	42.6	41.5	39.3	34.9	31.1	30.2	59
65		-	-	34.8	35.1	35.7	34.6	33.4	29.4	25.8	25.2	65
72		-	-	-	28.8	29.2	28.1	27.2	24.1	20.8	20.4	72
79		-	-	-	23.8	24.3	22.9	22.1	19.9	16.8	16.4	79
85		-	-	-	-	20.6	19.3	18.4	16.2	13.8	13.5	85
92		-	-	-	-	17.1	15.8	14.9	12.9	10.9	10.5	92
98		-	-	-	-	14.7	13.4	12.5	10.3	8.5	8.5	98
105		-	-	-	-	-	11.0	10.1	8.1	6.3	6.3	105
111		-	-	-	-	-	9.2	8.3	6.1	4.3	4.5	111
118		-	-	-	-	-	-	6.4	4.4	-	-	118
124		-	-	-	-	-	-	5.0	-	-	-	124
131		-	-	-	-	-	-	-	-	-	-	131

* with special attachment

STERLING CRANE

Lifting capacities main boom with SSL

313,100 lb   **360°** **85%**

Main boom

Radius	ft	108.3 *	123.7 *	139.1 *	154.5 *	170.3 **	183.7 **	Radius
ft	1,000 lb							ft
16	259.0	210.2	-	-	-	-	-	16
19	250.9	204.2	177.2	-	-	-	-	19
23	240.2	198.3	171.9	145.4	-	-	-	23
26	232.1	192.3	167.8	141.4	128.2	117.1	-	26
29	225.9	186.2	163.8	137.3	124.1	113.1	-	29
33	215.3	178.2	158.4	132.0	118.7	108.2	-	33
39	193.1	168.1	150.4	126.0	110.7	100.5	-	39
46	167.3	156.3	141.0	118.9	102.4	93.1	-	46
52	145.1	144.2	132.9	112.9	96.1	87.7	-	52
59	125.8	128.0	123.5	106.0	89.5	82.0	-	59
65	111.6	113.8	115.4	100.8	84.3	77.6	-	65
72	99.7	101.5	102.8	95.3	78.6	72.6	-	72
79	88.5	90.4	91.8	90.1	73.4	67.9	-	79
85	77.0	82.6	83.7	85.3	69.2	63.9	-	85
92	61.7	74.0	75.7	77.6	64.5	59.6	-	92
98	42.8	65.2	69.6	71.6	60.6	56.2	-	98
111	-	40.5	55.7	59.5	53.6	49.8	-	111
124	-	-	37.1	49.4	47.4	44.3	-	124
138	-	-	-	33.5	42.1	39.4	-	138
151	-	-	-	-	30.5	35.8	-	151
164	-	-	-	-	-	26.0	-	164

269,000 lb   **360°** **85%**

Main boom

Radius	ft	108.3 *	123.7 *	139.1 *	154.5 *	170.3 *	183.7 *	Radius
ft	1,000 lb							ft
16	259.0	210.2	-	-	-	-	-	16
19	250.9	204.2	177.2	-	-	-	-	19
23	240.2	198.3	171.9	145.4	-	-	-	23
26	232.1	192.3	167.8	141.4	119.2	100.4	-	26
29	225.9	186.2	163.8	137.3	117.1	98.4	-	29
33	215.2	178.2	158.4	132.0	114.4	95.7	-	33
39	191.0	168.1	150.4	126.0	109.8	91.9	-	39
46	158.5	156.3	141.0	118.9	104.6	87.9	-	46
52	138.3	140.2	132.9	112.9	100.6	84.4	-	52
59	119.2	121.4	121.3	106.0	96.1	80.9	-	59
65	106.4	108.2	109.4	100.8	92.3	77.9	-	65
72	91.2	93.6	95.1	95.3	88.2	74.3	-	72
79	78.9	80.9	82.7	84.9	83.9	71.0	-	79
85	70.3	72.3	73.8	76.0	77.7	68.2	-	85
92	61.5	63.7	65.3	67.3	69.0	64.7	-	92
98	42.7	57.5	59.0	61.0	62.8	62.1	-	98
111	-	40.2	48.2	50.0	51.6	52.0	-	111
124	-	-	36.7	41.8	43.2	43.6	-	124
138	-	-	-	33.6	36.0	36.5	-	138
151	-	-	-	-	30.6	30.8	-	151
164	-	-	-	-	-	26.0	-	164

* SSL 0°

** SSL 30°

STERLING CRANE

Lifting capacities main boom with SSL

224,900 lb   **360°** **85%**

Main boom

Radius	ft	108.3 *	123.7 *	139.1 *	154.5 *	170.3 *	183.7 *	Radius
ft					1,000 lb			ft
16		259.0	210.2	-	-	-	-	16
19		250.9	204.2	177.2	-	-	-	19
23		240.2	198.3	171.9	145.4	-	-	23
26		232.1	192.3	167.8	141.4	119.2	100.4	26
29		225.9	186.2	163.8	137.3	117.1	98.4	29
33		214.9	178.2	158.4	132.0	114.4	95.7	33
39		180.6	168.1	150.4	126.0	109.8	91.9	39
46		149.6	151.8	140.9	118.9	104.6	87.9	46
52		127.4	129.6	130.9	112.9	100.6	84.4	52
59		104.9	107.3	109.0	106.0	96.1	80.9	59
65		89.9	92.3	94.1	96.0	92.3	77.9	65
72		75.9	78.3	79.9	82.3	84.0	74.3	72
79		65.3	67.3	69.1	71.3	73.0	70.9	79
85		57.7	59.6	61.4	63.4	65.2	65.5	85
92		50.3	52.3	53.8	55.8	57.6	58.0	92
98		42.0	46.9	48.4	50.4	52.1	52.4	98
111		-	37.4	38.7	40.9	42.5	42.9	111
124		-	-	31.2	33.4	34.9	35.4	124
138		-	-	-	26.8	28.5	28.8	138
151		-	-	-	-	23.5	23.7	151
164		-	-	-	-	-	19.8	164

136,700 lb   **360°** **85%**

Main boom

Radius	ft	108.3 *	123.7 *	139.1 *	154.5 *	170.3 *	183.7 *	Radius
ft					1,000 lb			ft
16		259.0	210.2	-	-	-	-	16
19		250.9	204.2	177.2	-	-	-	19
23		240.1	198.3	171.9	145.4	-	-	23
26		223.9	192.3	167.8	141.4	119.2	100.4	26
29		194.9	184.4	163.8	137.3	117.1	98.4	29
33		164.3	159.9	153.4	131.9	114.4	95.7	33
39		132.0	127.6	125.2	121.8	109.8	91.9	39
46		104.5	103.4	101.4	100.5	99.0	87.9	46
52		84.7	87.1	86.3	86.0	85.3	82.6	52
59		67.5	70.2	71.9	72.6	72.4	71.0	59
65		56.8	59.3	61.0	63.3	63.7	62.6	65
72		46.9	49.1	50.9	53.1	54.9	54.0	72
79		38.3	40.9	42.9	45.1	46.9	46.7	79
85		32.4	34.9	36.9	39.3	41.0	41.4	85
92		26.8	29.0	30.7	33.4	35.3	35.8	92
98		22.7	24.7	26.5	28.9	30.9	31.4	98
111		-	17.7	19.2	21.4	23.4	23.9	111
124		-	-	13.9	15.9	17.7	18.1	124
138		-	-	-	11.1	12.9	13.1	138
151		-	-	-	-	9.4	9.6	151
164		-	-	-	-	-	6.8	164

* SSL 0°