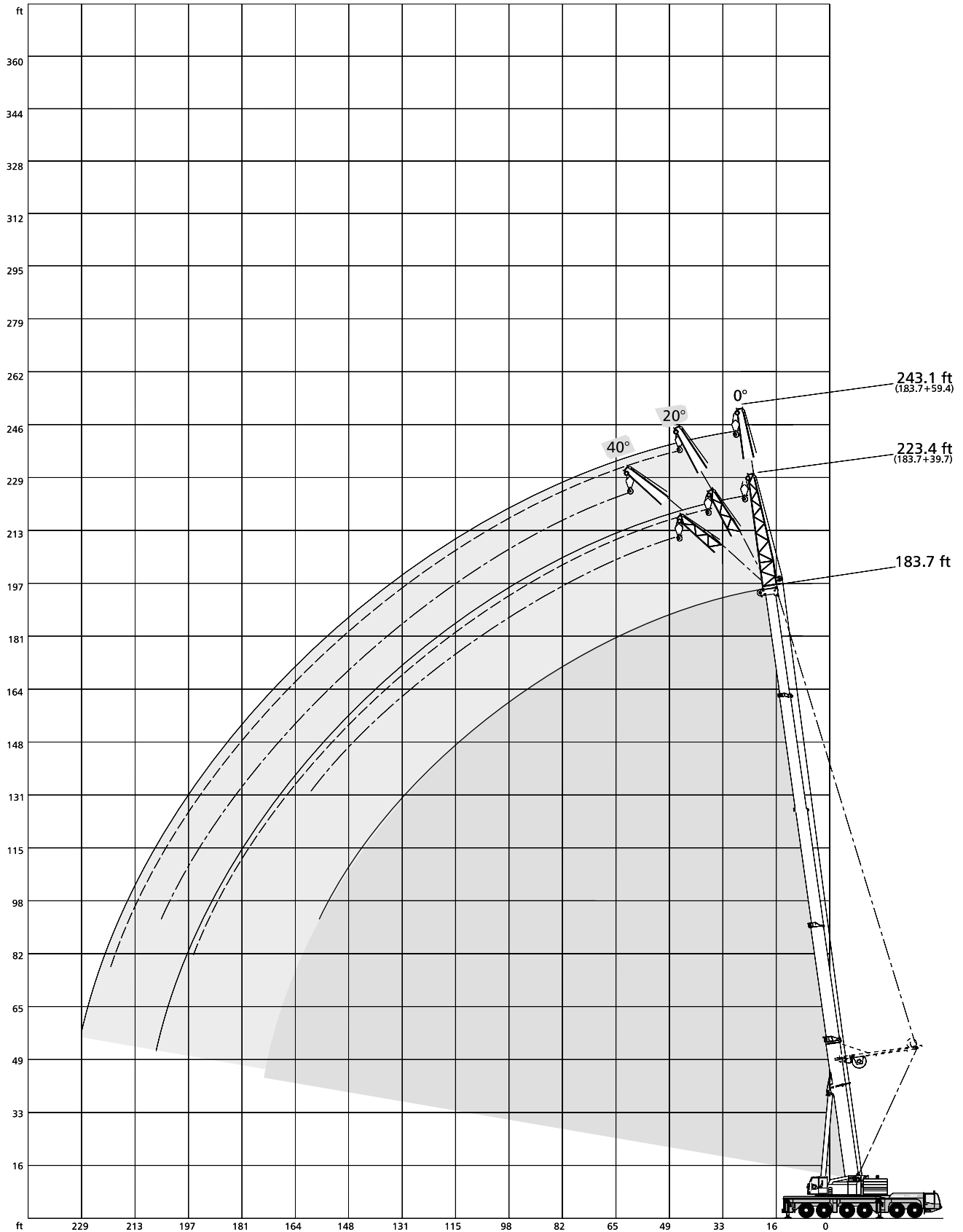




LIFTING CHARTS - All Terrain Cranes

DEMAG MODEL AC 350 - 400 TON CAPACITY

Working ranges main boom extension with / without SSL



Lifting capacities main boom extension

  360° 85%

170.3 ft Main boom										
Extension 40.0 ft										
Radius ft	269,000 lb*			224,900 lb*			180,800 lb*			Radius ft
	0°	20°	40°	0°	20°	40°	0°	20°	40°	
	1,000 lb									
39	61.4	-	-	61.4	-	-	61.4	-	-	39
46	58.1	-	-	58.1	-	-	58.1	-	-	46
52	55.3	39.1	-	55.3	39.1	-	55.3	39.1	-	52
59	52.0	37.2	28.6	52.0	37.2	28.6	52.0	37.2	28.6	59
65	49.4	35.8	28.0	49.4	35.8	28.0	49.4	35.8	28.0	65
72	46.1	34.4	27.3	46.1	34.4	27.3	46.1	34.4	27.3	72
79	42.8	33.0	26.8	42.8	33.0	26.8	42.8	33.0	26.8	79
85	40.2	32.0	26.2	40.2	32.0	26.2	40.2	32.0	26.2	85
92	37.6	30.8	25.7	37.6	30.8	25.7	37.6	30.8	25.7	92
98	35.4	30.0	25.3	35.4	30.0	25.3	35.4	30.0	25.3	98
111	31.6	28.2	24.7	31.6	28.2	24.7	31.6	28.2	24.7	111
124	29.0	26.9	24.0	29.0	26.9	24.0	29.0	26.9	24.0	124
138	26.8	25.5	23.8	26.8	25.5	23.8	26.8	25.5	23.8	138
151	25.1	24.0	23.5	25.1	24.0	23.5	23.3	24.0	23.5	151
164	22.9	22.2	-	22.9	22.2	-	19.4	20.0	-	164
177	20.5	20.5	-	20.5	20.5	-	16.1	16.5	-	177
187	18.7	18.9	-	18.7	18.9	-	13.8	14.3	-	187
190	18.3	-	-	18.3	-	-	13.2	-	-	190
203	-	-	-	-	-	-	-	-	-	203

170.3 ft Main boom										
Extension 59.1 ft										
Radius ft	269,000 lb*			224,900 lb*			180,800 lb*			Radius ft
	0°	20°	40°	0°	20°	40°	0°	20°	40°	
	1,000 lb									
39	38.3	-	-	38.3	-	-	38.3	-	-	39
46	37.6	-	-	37.6	-	-	37.6	-	-	46
52	36.8	-	-	36.8	-	-	36.8	-	-	52
59	36.1	-	-	36.1	-	-	36.1	-	-	59
62	35.7	30.6	-	35.7	30.6	-	35.7	30.6	-	62
65	35.3	30.2	-	35.3	30.2	-	35.3	30.2	-	65
72	34.4	29.1	-	34.4	29.1	-	34.4	29.1	-	72
79	33.4	28.1	24.4	33.4	28.1	24.4	33.4	28.1	24.4	79
85	32.4	27.3	23.8	32.4	27.3	23.8	32.4	27.3	23.8	85
92	31.2	26.6	23.3	31.2	26.6	23.3	31.2	26.6	23.3	92
98	30.4	25.8	22.9	30.4	25.8	22.9	30.4	25.8	22.9	98
111	28.1	24.5	22.2	28.1	24.5	22.2	28.1	24.5	22.2	111
124	25.9	23.4	21.8	25.9	23.4	21.8	25.9	23.4	21.8	124
138	23.5	22.0	21.1	23.5	22.0	21.1	23.5	22.0	21.1	138
151	21.5	20.7	20.2	21.5	20.7	20.2	21.5	20.7	20.2	151
164	19.8	19.4	19.4	19.8	19.4	19.4	19.8	19.4	19.4	164
170	19.2	19.0	19.0	19.2	19.0	19.0	18.4	18.8	19.0	170
177	18.5	18.3	-	18.5	18.3	-	16.7	17.8	-	177
190	17.2	17.2	-	17.2	17.2	-	13.9	14.8	-	190
203	15.7	16.1	-	15.7	16.1	-	11.5	12.2	-	203
213	14.5	-	-	14.5	-	-	10.1	-	-	213

* counterweight

Lifting capacities main boom extension



183.7 ft Main boom

Radius ft	Extension 40.0 ft									Radius ft
	269,000 lb*			224,900 lb*			180,800 lb*			
	0°	20°	40°	0°	20°	40°	0°	20°	40°	
46	50.4	-	-	50.4	-	-	50.4	-	-	46
52	47.8	-	-	47.8	-	-	47.8	-	-	52
56	45.9	37.6	-	45.9	37.6	-	45.9	37.6	-	56
59	44.5	36.8	-	44.5	36.8	-	44.5	36.8	-	59
65	42.1	35.4	27.8	42.1	35.4	27.8	42.1	35.4	27.8	65
72	39.3	33.7	27.3	39.3	33.7	27.3	39.3	33.7	27.3	72
79	36.9	32.3	26.6	36.9	32.3	26.6	36.9	32.3	26.6	79
85	35.1	30.9	26.2	35.1	30.9	26.2	35.1	30.9	26.2	85
92	33.2	29.7	25.5	33.2	29.7	25.5	33.2	29.7	25.5	92
98	31.8	28.5	25.1	31.8	28.5	25.1	31.8	28.5	25.1	98
111	28.7	26.3	24.0	28.7	26.3	24.0	28.7	26.3	24.0	111
124	26.1	24.5	22.9	26.1	24.5	22.9	26.1	24.5	22.9	124
138	23.7	22.6	21.8	23.7	22.6	21.8	23.7	22.6	21.8	138
151	22.0	21.3	20.7	22.0	21.3	20.7	22.0	21.3	20.7	151
164	20.5	20.0	19.8	20.5	20.0	19.8	19.1	20.0	19.8	164
177	18.9	18.7	-	18.9	18.7	-	15.9	16.5	-	177
190	17.4	17.2	-	17.4	17.2	-	13.0	13.5	-	190
200	16.1	15.8	-	16.1	15.8	-	11.2	11.4	-	200
203	15.7	-	-	15.7	-	-	10.6	-	-	203

183.7 ft Main boom

Radius ft	Extension 59.1 ft									Radius ft
	269,000 lb*			224,900 lb*			180,800 lb*			
	0°	20°	40°	0°	20°	40°	0°	20°	40°	
42	33.5	-	-	33.5	-	-	33.5	-	-	42
46	33.2	-	-	33.2	-	-	33.2	-	-	46
52	32.6	-	-	32.6	-	-	32.6	-	-	52
59	32.1	-	-	32.1	-	-	32.1	-	-	59
65	31.3	28.5	-	31.3	28.5	-	31.3	28.5	-	65
72	30.4	27.3	-	30.4	27.3	-	30.4	27.3	-	72
79	29.4	26.2	-	29.4	26.2	-	29.4	26.2	-	79
82	28.8	25.7	23.1	28.8	25.7	23.1	28.8	25.7	23.1	82
85	28.4	25.1	22.7	28.4	25.1	22.7	28.4	25.1	22.7	85
92	27.3	24.0	21.8	27.3	24.0	21.8	27.3	24.0	21.8	92
98	26.3	23.2	21.2	26.3	23.2	21.2	26.3	23.2	21.2	98
111	24.1	21.4	19.6	24.1	21.4	19.6	24.1	21.4	19.6	111
124	22.1	19.7	18.5	22.1	19.7	18.5	22.1	19.7	18.5	124
138	20.2	18.2	17.4	20.2	18.2	17.4	20.2	18.2	17.4	138
151	18.7	17.1	16.5	18.7	17.1	16.5	18.7	17.1	16.5	151
164	17.4	16.0	15.8	17.4	16.0	15.8	17.4	16.0	15.8	164
177	16.3	15.4	15.2	16.3	15.4	15.2	16.3	15.4	15.2	177
180	15.9	15.2	15.2	15.9	15.2	15.2	15.7	15.2	15.2	180
190	15.2	14.7	-	15.2	14.7	-	13.7	14.7	-	190
203	14.3	14.1	-	14.3	14.1	-	11.3	11.9	-	203
216	13.2	13.4	-	13.2	13.4	-	9.1	9.7	-	216
229	11.5	-	-	11.5	-	-	7.3	-	-	229
243	-	-	-	-	-	-	-	-	-	243

* counterweight

Lifting capacities main boom extension with SSL 30°



170.3 ft Main boom										
Extension 40.0 ft										
Radius ft	269,000 lb*			224,900 lb*			180,800 lb*			Radius ft
	0°	20°	40°	0°	20°	40°	0°	20°	40°	
33	75.3	-	-	75.3	-	-	75.3	-	-	33
39	75.3	-	-	75.3	-	-	75.3	-	-	39
46	72.9	44.2	-	72.9	44.2	-	72.9	44.2	-	46
52	69.3	42.2	-	69.3	42.2	-	69.3	42.2	-	52
56	66.8	40.9	29.9	66.8	40.9	29.9	66.8	40.9	29.9	56
59	64.8	40.1	29.7	64.8	40.1	29.7	64.8	40.1	29.7	59
65	61.4	38.5	28.9	61.4	38.5	28.9	61.4	38.5	28.9	65
72	57.4	36.8	28.2	57.4	36.8	28.2	57.4	36.8	28.2	72
79	53.6	35.2	27.5	53.6	35.2	27.5	53.6	35.2	27.5	79
85	50.6	34.0	26.9	50.6	34.0	26.9	50.6	34.0	26.9	85
92	47.3	32.8	26.4	47.3	32.8	26.4	47.3	32.8	26.4	92
98	44.9	31.8	26.0	44.9	31.8	26.0	44.9	31.8	26.0	98
111	40.3	29.8	25.1	40.3	29.8	25.1	40.3	29.8	25.1	111
124	36.5	28.2	24.5	36.5	28.2	24.5	36.5	28.2	24.5	124
138	33.2	26.8	24.2	33.2	26.8	24.2	33.2	26.8	24.2	138
151	30.8	25.7	24.0	30.8	25.7	24.0	28.4	25.7	24.0	151
164	28.6	24.9	-	28.6	24.9	-	23.8	24.6	-	164
177	26.9	24.2	-	26.4	24.2	-	19.8	20.5	-	177
187	21.6	24.0	-	21.6	24.0	-	17.4	17.8	-	187
190	20.0	-	-	20.0	-	-	16.6	-	-	190
203	-	-	-	-	-	-	-	-	-	203

170.3 ft Main boom										
Extension 59.1 ft										
Radius ft	269,000 lb*			224,900 lb*			180,800 lb*			Radius ft
	0°	20°	40°	0°	20°	40°	0°	20°	40°	
33	47.3	-	-	47.3	-	-	47.3	-	-	33
39	46.5	-	-	46.5	-	-	46.5	-	-	39
46	45.4	-	-	45.4	-	-	45.4	-	-	46
52	44.1	-	-	44.1	-	-	44.1	-	-	52
56	43.1	34.1	-	43.1	34.1	-	43.1	34.1	-	56
59	42.5	33.5	-	42.5	33.5	-	42.5	33.5	-	59
65	40.9	32.3	-	40.9	32.3	-	40.9	32.3	-	65
69	40.0	31.5	26.0	40.0	31.5	26.0	40.0	31.5	26.0	69
72	39.2	31.1	25.8	39.2	31.1	25.8	39.2	31.1	25.8	72
79	37.8	29.9	25.1	37.8	29.9	25.1	37.8	29.9	25.1	79
85	36.4	28.9	24.7	36.4	28.9	24.7	36.4	28.9	24.7	85
92	35.0	27.9	24.2	35.0	27.9	24.2	35.0	27.9	24.2	92
98	33.8	27.1	23.6	33.8	27.1	23.6	33.8	27.1	23.6	98
111	31.1	25.8	22.7	31.1	25.8	22.7	31.1	25.8	22.7	111
124	28.9	24.5	22.0	28.9	24.5	22.0	28.9	24.5	22.0	124
138	26.8	23.3	21.5	26.8	23.3	21.5	26.8	23.3	21.5	138
151	25.3	22.4	21.1	25.3	22.4	21.1	25.3	22.4	21.1	151
164	24.0	21.8	20.9	24.0	21.8	20.9	24.0	21.8	20.9	164
174	23.1	21.3	20.9	23.1	21.3	20.9	21.5	21.3	20.9	174
177	22.9	21.3	-	22.9	21.3	-	20.9	21.3	-	177
190	21.8	20.9	-	21.8	20.9	-	17.7	18.7	-	190
203	20.1	20.7	-	20.1	20.7	-	14.8	15.5	-	203
210	15.1	-	-	15.1	-	-	13.6	-	-	210

* counterweight

Lifting capacities main boom extension with SSL 30°

 360° 85%

183.7 ft Main boom

Radius ft	Extension 40.0 ft									Radius ft
	269,000 lb*			224,900 lb*			180,800 lb*			
	0°	20°	40°	0°	20°	40°	0°	20°	40°	
	1,000 lb									
36	75.3	-	-	75.3	-	-	75.3	-	-	36
39	75.3	-	-	75.3	-	-	75.3	-	-	39
46	71.6	-	-	71.6	-	-	71.6	-	-	46
49	69.5	43.7	-	69.5	43.7	-	69.5	43.7	-	49
52	67.7	42.7	-	67.7	42.7	-	67.7	42.7	-	52
59	63.5	40.8	29.7	63.5	40.8	29.7	63.5	40.8	29.7	59
65	60.0	39.1	29.1	60.0	39.1	29.1	60.0	39.1	29.1	65
72	56.3	37.5	28.4	56.3	37.5	28.4	56.3	37.5	28.4	72
79	52.7	35.8	27.7	52.7	35.8	27.7	52.7	35.8	27.7	79
85	49.9	34.6	27.1	49.9	34.6	27.1	49.9	34.6	27.1	85
92	46.9	33.4	26.6	46.9	33.4	26.6	46.9	33.4	26.6	92
98	44.4	32.4	26.2	44.4	32.4	26.2	44.4	32.4	26.2	98
111	40.0	30.5	25.6	40.0	30.5	25.6	40.0	30.5	25.6	111
124	36.1	28.5	24.9	36.1	28.5	24.9	36.1	28.5	24.9	124
138	32.5	26.8	24.4	32.5	26.8	24.4	32.5	26.8	24.4	138
151	29.9	25.7	24.0	29.9	25.7	24.0	28.1	25.7	24.0	151
164	27.7	25.3	24.0	27.7	25.3	24.0	23.6	24.6	24.0	164
177	26.0	24.7	-	26.0	24.7	-	19.8	20.7	-	177
190	24.2	23.6	-	22.5	23.1	-	16.6	17.0	-	190
200	18.6	20.5	-	18.1	20.5	-	14.3	14.8	-	200
203	16.7	-	-	16.7	-	-	13.7	-	-	203

183.7 ft Main boom

Radius ft	Extension 59.1 ft									Radius ft
	269,000 lb*			224,900 lb*			180,800 lb*			
	0°	20°	40°	0°	20°	40°	0°	20°	40°	
	1,000 lb									
36	45.6	-	-	45.6	-	-	45.6	-	-	36
39	45.2	-	-	45.2	-	-	45.2	-	-	39
46	44.3	-	-	44.3	-	-	44.3	-	-	46
52	43.2	-	-	43.2	-	-	43.2	-	-	52
59	41.6	33.2	-	41.6	33.2	-	41.6	33.2	-	59
65	40.4	32.2	-	40.4	32.2	-	40.4	32.2	-	65
72	38.8	31.1	25.5	38.8	31.1	25.5	38.8	31.1	25.5	72
79	37.4	29.9	24.8	37.4	29.9	24.8	37.4	29.9	24.8	79
85	36.2	29.1	24.4	36.2	29.1	24.4	36.2	29.1	24.4	85
92	34.8	28.2	24.0	34.8	28.2	24.0	34.8	28.2	24.0	92
98	33.5	27.3	23.6	33.5	27.3	23.6	33.5	27.3	23.6	98
111	31.3	25.8	22.9	31.3	25.8	22.9	31.3	25.8	22.9	111
124	29.4	24.5	22.3	29.4	24.5	22.3	29.4	24.5	22.3	124
138	27.3	23.3	21.5	27.3	23.3	21.5	27.3	23.3	21.5	138
151	25.5	22.4	21.1	25.5	22.4	21.1	25.5	22.4	21.1	151
164	24.0	21.8	20.9	24.0	21.8	20.9	24.0	21.8	20.9	164
177	22.5	21.1	20.7	22.5	21.1	20.7	20.7	21.1	20.7	177
187	21.3	20.7	20.7	21.3	20.7	20.7	18.3	19.1	20.0	187
190	20.9	20.5	-	20.9	20.5	-	17.4	18.5	-	190
203	19.6	19.4	-	19.6	19.4	-	14.6	15.5	-	203
216	16.8	18.5	-	16.8	17.9	-	12.2	12.8	-	216
223	12.4	-	-	12.4	-	-	11.0	-	-	223
243	-	-	-	-	-	-	-	-	-	243

* counterweight