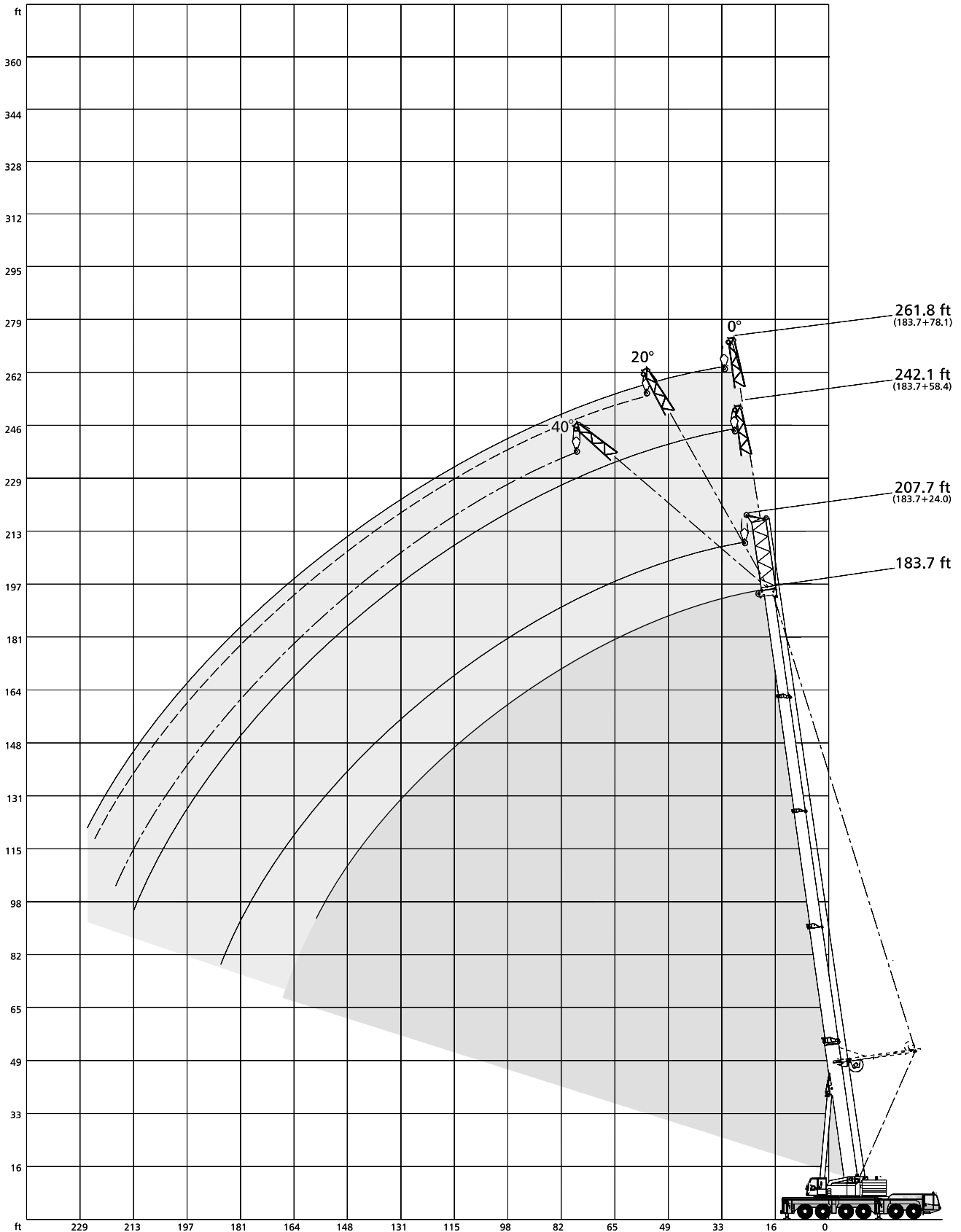




LIFTING CHARTS - All Terrain Cranes

DEMAG MODEL AC 350 - 400 TON CAPACITY

Working ranges fixed fly jib (LF) with / without SSL



STERLING CRANE

Lifting capacities fixed fly jib (LF)

224,900 lb   360° 85%

170.3 ft Main boom					183.7 ft Main boom						
Radius	24.0 ft 0°	Fly jib			Radius	24.0 ft 0°	Fly jib				
		58.7 ft 0°	78.4 ft				58.7 ft 0°	78.4 ft			
ft		1,000 lb	0°	20°	40°	ft		1,000 lb	0°	20°	40°
36	70.3	-	-	-	-	42	60.6	-	-	-	-
39	68.1	-	-	-	-	46	57.9	-	-	-	-
42	65.9	48.9	-	-	-	49	56.1	41.5	-	-	-
46	63.2	47.3	-	-	-	52	54.3	40.3	34.3	-	-
49	61.2	46.3	37.3	-	-	59	50.2	37.9	32.4	-	-
52	59.3	45.1	36.3	-	-	65	47.2	35.9	30.8	-	-
59	55.3	42.7	34.1	-	-	72	44.1	33.7	28.9	-	-
65	52.1	40.7	32.5	-	-	79	41.3	31.8	27.2	20.9	-
72	48.8	38.6	30.9	-	-	85	39.1	30.2	25.8	20.1	-
75	47.3	37.8	30.2	21.8	-	92	36.7	28.6	24.4	19.3	-
79	45.7	36.5	29.4	21.3	-	98	35.1	27.2	23.4	18.5	15.2
85	43.3	34.9	28.0	20.7	-	111	31.6	24.5	21.0	17.0	14.5
92	40.7	33.2	26.8	20.0	15.6	124	28.8	22.5	19.2	15.9	13.7
98	38.7	31.6	25.8	19.4	15.2	138	26.1	20.4	17.3	14.5	12.7
111	34.7	28.7	23.8	18.1	14.7	151	23.7	19.1	16.0	13.6	12.1
124	31.4	26.3	22.1	17.2	14.3	164	21.8	17.8	14.7	12.7	11.2
138	28.1	24.0	20.4	16.5	13.8	177	19.6	16.5	13.9	11.9	10.8
151	25.5	22.0	19.1	15.8	13.6	190	17.2	15.6	12.8	11.2	10.3
164	22.7	20.5	18.0	15.2	13.4	200	-	15.0	12.3	11.0	10.3
177	20.0	19.1	16.7	14.7	13.4	203	-	14.7	12.1	10.8	-
190	-	17.8	15.6	14.1	13.4	216	-	13.7	11.4	10.3	-
203	-	16.5	14.7	13.6	-	226	-	13.0	11.0	10.1	-
213	-	15.2	13.9	13.2	-	229	-	-	10.8	10.1	-
216	-	-	13.7	13.0	-	236	-	-	10.5	9.9	-
223	-	-	13.2	12.5	-	243	-	-	10.5	-	-
229	-	-	12.8	-	-	249	-	-	-	-	-
236	-	-	-	-	-	256	-	-	-	-	-

180,800 lb   360° 85%

170.3 ft Main boom					183.7 ft Main boom						
Radius	24.0 ft 0°	Fly jib			Radius	24.0 ft 0°	Fly jib				
		58.7 ft 0°	78.4 ft				58.7 ft 0°	78.4 ft			
ft		1,000 lb	0°	20°	40°	ft		1,000 lb	0°	20°	40°
36	70.3	-	-	-	-	42	60.6	-	-	-	-
39	68.1	-	-	-	-	46	57.9	-	-	-	-
42	65.9	48.9	-	-	-	49	56.1	41.5	-	-	-
46	63.2	47.3	-	-	-	52	54.3	40.3	34.3	-	-
49	61.2	46.3	37.3	-	-	59	50.2	37.9	32.4	-	-
52	59.3	45.1	36.3	-	-	65	47.2	35.9	30.8	-	-
59	55.3	42.7	34.1	-	-	72	44.1	33.7	28.9	-	-
65	52.1	40.7	32.5	-	-	79	41.3	31.8	27.2	20.9	-
72	48.8	38.6	30.9	-	-	85	39.1	30.2	25.8	20.1	-
75	47.3	37.8	30.2	21.8	-	92	36.7	28.6	24.4	19.3	-
79	45.7	36.5	29.4	21.3	-	98	35.1	27.2	23.4	18.5	15.2
85	43.3	34.9	28.0	20.7	-	111	31.6	24.5	21.0	17.0	14.5
92	40.7	33.2	26.8	20.0	15.6	124	28.8	22.5	19.2	15.9	13.7
98	38.7	31.6	25.8	19.4	15.2	138	26.1	20.4	17.3	14.5	12.7
111	34.7	28.7	23.8	18.1	14.7	151	21.8	19.1	16.0	13.6	12.1
124	31.4	26.3	22.1	17.2	14.3	164	17.8	17.8	14.7	12.7	11.2
138	26.6	24.0	20.4	16.5	13.8	177	14.5	16.5	13.9	11.9	10.8
151	21.8	22.0	19.1	15.8	13.6	190	11.7	14.1	12.8	11.2	10.3
164	17.8	20.5	18.0	15.2	13.4	200	-	12.3	12.1	11.0	10.3
177	14.5	17.2	16.7	14.7	13.4	203	-	11.7	11.9	10.8	-
190	-	14.6	14.8	14.1	13.4	216	-	9.7	9.7	10.3	-
203	-	12.2	12.4	13.4	-	226	-	8.4	8.4	9.0	-
213	-	10.6	10.8	11.7	-	229	-	-	8.0	8.8	-
216	-	-	10.2	11.1	-	236	-	-	7.2	7.7	-
223	-	-	9.2	9.9	-	243	-	-	6.3	-	-
229	-	-	8.4	-	-	249	-	-	-	-	-
236	-	-	-	-	-	256	-	-	-	-	-

STERLING CRANE

Lifting capacities fixed fly jib (LF) with SSL 30°

269,000 lb   360° 85%

170.3 ft Main boom						183.7 ft Main boom					
Radius	Fly jib		78.4 ft			Radius	Fly jib		78.4 ft		
	24.0 ft	58.7 ft	0°	20°	40°		24.0 ft	58.7 ft	0°	20°	40°
ft	0°	0°	1,000 lb			ft	0°	0°	1,000 lb		
29	98.3	-	-	-	-	33	84.5	-	-	-	
33	93.0	-	-	-	-	39	80.2	55.0	-	-	
36	89.3	61.7	-	-	-	42	78.2	53.8	44.5	-	
39	85.7	60.3	46.8	-	-	46	75.3	52.2	42.9	-	
46	78.4	56.8	44.0	-	-	52	71.5	49.8	40.7	-	
52	72.9	53.8	41.8	-	-	59	67.0	47.1	38.3	-	
59	67.2	50.2	39.4	-	-	65	63.4	45.1	36.5	-	
65	63.2	47.4	37.6	24.3	-	69	61.0	43.8	35.2	23.7	
72	58.7	44.6	35.3	23.3	-	72	59.4	43.0	34.4	23.3	
79	54.9	42.0	33.2	22.2	-	79	55.6	41.1	32.5	22.4	
85	51.9	40.0	31.6	21.6	16.3	85	52.6	39.5	31.1	21.6	
92	48.6	37.8	29.7	20.7	15.8	88	51.2	38.9	30.5	21.2	
98	46.0	36.2	28.1	20.1	15.6	92	49.3	37.8	29.7	20.9	
111	40.9	33.1	25.2	18.7	15.0	98	46.9	36.6	28.5	20.1	
124	36.8	30.3	23.2	17.9	14.3	111	42.0	34.2	26.3	19.0	
138	33.4	27.9	21.5	16.7	13.8	124	38.1	31.8	24.3	17.9	
151	30.8	26.2	20.2	16.0	13.4	138	34.5	29.5	22.2	16.9	
164	26.4	24.6	19.1	15.4	13.2	151	31.2	27.5	20.4	16.0	
177	20.1	23.6	17.8	14.7	13.2	164	26.4	25.5	18.9	15.4	
190	-	21.8	16.9	14.3	13.2	177	22.5	23.8	17.8	14.9	
203	-	19.0	16.1	13.9	-	190	16.4	21.6	16.9	14.5	
210	-	14.5	15.6	13.8	-	203	-	18.8	16.3	13.9	
216	-	-	15.4	13.6	-	216	-	16.2	15.8	13.6	
226	-	-	12.8	13.6	-	223	-	11.7	15.0	13.4	
229	-	-	12.0	-	-	229	-	-	14.3	13.4	
239	-	-	-	-	-	239	-	-	10.7	13.2	
243	-	-	-	-	-	243	-	-	9.1	-	

224,900 lb   360° 85%

170.3 ft Main boom						183.7 ft Main boom					
Radius	Fly jib		78.4 ft			Radius	Fly jib		78.4 ft		
	24.0 ft	58.7 ft	0°	20°	40°		24.0 ft	58.7 ft	0°	20°	40°
ft	0°	0°	1,000 lb			ft	0°	0°	1,000 lb		
29	98.3	-	-	-	-	33	84.5	-	-	-	
33	93.0	-	-	-	-	39	80.2	55.0	-	-	
36	89.3	61.7	-	-	-	42	78.2	53.8	44.5	-	
39	85.7	60.3	46.8	-	-	46	75.3	52.2	42.9	-	
46	78.4	56.8	44.0	-	-	52	71.5	49.8	40.7	-	
52	72.9	53.8	41.8	-	-	59	67.0	47.1	38.3	-	
59	67.2	50.2	39.4	-	-	65	63.4	45.1	36.5	-	
65	63.2	47.4	37.6	24.3	-	69	61.0	43.8	35.2	23.7	
72	58.7	44.6	35.3	23.3	-	72	59.4	43.0	34.4	23.3	
79	54.9	42.0	33.2	22.2	-	79	55.6	41.1	32.5	22.4	
85	51.9	40.0	31.6	21.6	16.3	85	52.6	39.5	31.1	21.6	
92	48.6	37.8	29.7	20.7	15.8	88	51.2	38.9	30.5	21.2	
98	46.0	36.2	28.1	20.1	15.6	92	49.3	37.8	29.7	20.9	
111	40.9	33.1	25.2	18.7	15.0	98	46.9	36.6	28.5	20.1	
124	35.9	30.3	23.2	17.9	14.3	111	42.0	34.2	26.3	19.0	
138	29.4	27.9	21.5	16.7	13.8	124	36.0	31.8	24.3	17.9	
151	24.2	26.2	20.2	16.0	13.4	138	29.4	29.5	22.2	16.9	
164	20.0	23.1	19.1	15.4	13.2	151	24.2	27.0	20.4	16.0	
177	16.5	19.4	17.8	14.7	13.2	164	20.0	22.9	18.9	15.4	
190	-	16.5	16.9	14.3	13.2	177	16.5	19.2	17.8	14.9	
203	-	13.9	14.4	13.9	-	190	13.5	16.3	16.5	14.5	
210	-	12.7	13.2	13.4	-	203	-	13.7	14.1	13.9	
216	-	-	12.2	13.0	-	216	-	11.5	11.7	12.8	
226	-	-	10.6	11.3	-	223	-	10.3	10.8	11.7	
229	-	-	10.2	-	-	229	-	-	9.8	10.6	
239	-	-	-	-	-	239	-	-	8.6	9.1	
243	-	-	-	-	-	243	-	-	8.1	-	