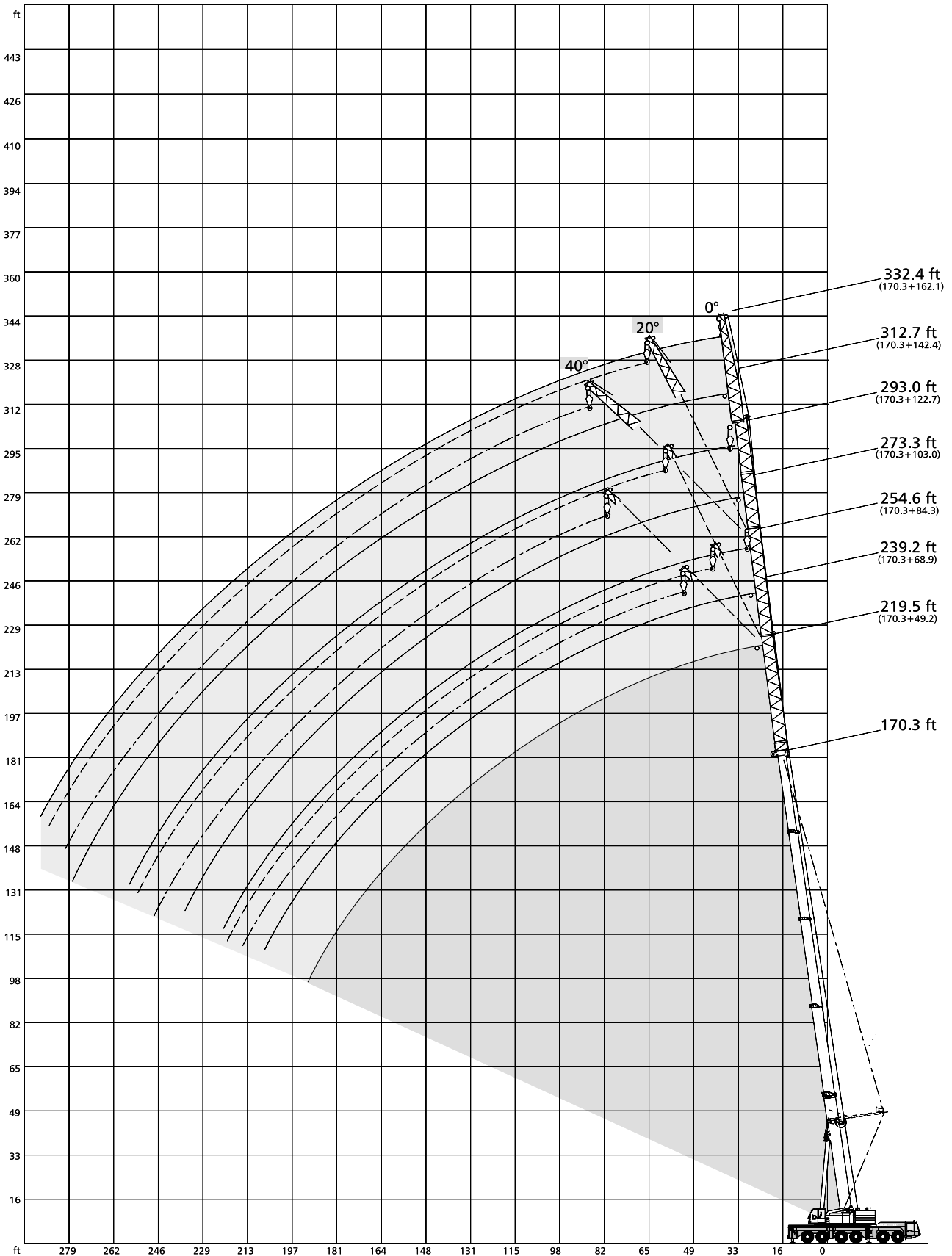




LIFTING CHARTS - All Terrain Cranes

DEMAG MODEL AC 350 - 400 TON CAPACITY

Working ranges fixed fly jib (SF) with / without SSL



STERLING CRANE

Lifting capacities fixed fly jib (SF)

224,900 lb   360° 85%

170.3 ft Main boom														
Radius ft	49.2 ft	68.9 ft	85.0 ft			Fly jib				143.1 ft	162.7 ft			Radius ft
	0°	0°	0°	20°	40°	103.7 ft	123.4 ft			0°	0°	20°	40°	
	1,000 lb													
46	54.8	-	-	-	-	-	-	-	-	-	-	-	-	46
49	53.0	45.0	-	-	-	-	-	-	-	-	-	-	-	49
52	51.2	43.6	38.9	-	-	-	-	-	-	-	-	-	-	52
59	47.4	40.8	36.3	-	-	31.9	-	-	-	-	-	-	-	59
65	44.4	38.3	34.5	31.6	-	30.7	24.9	-	-	21.6	-	-	-	65
72	41.3	35.7	32.4	30.0	-	29.3	24.0	-	-	20.9	16.3	-	-	72
79	38.4	33.4	30.3	28.5	25.3	27.9	23.3	-	-	20.4	16.3	-	-	79
85	36.2	31.6	28.9	27.1	24.9	26.7	22.5	-	-	19.8	16.1	-	-	85
92	34.1	29.7	27.3	25.9	24.4	25.3	21.5	18.9	-	19.1	15.8	-	-	92
98	32.3	28.1	25.8	24.7	23.8	24.1	20.9	18.5	-	18.5	15.4	-	-	98
111	29.2	25.2	23.4	22.5	22.3	21.9	19.2	17.4	14.9	17.2	14.8	13.9	-	111
124	26.3	22.8	21.2	20.3	20.5	19.7	17.5	16.3	14.5	15.7	13.7	12.6	12.8	124
138	24.0	20.4	19.1	18.4	18.7	17.8	15.8	15.1	14.0	14.3	12.5	11.6	11.8	138
151	22.0	18.7	17.6	16.9	17.1	16.3	14.3	14.1	13.4	13.0	11.4	10.7	11.0	151
164	20.2	17.2	16.0	15.6	15.6	14.9	13.2	13.0	12.7	11.9	10.3	9.9	10.1	164
177	18.5	15.8	15.0	14.5	14.5	13.9	12.1	12.1	12.1	10.8	9.2	9.2	9.2	177
190	16.7	14.5	13.9	13.6	-	12.8	11.2	11.2	11.2	9.7	8.3	8.6	8.6	190
203	14.8	13.4	12.8	12.8	-	11.9	10.3	10.3	10.3	9.0	7.7	7.9	7.9	203
216	-	12.3	11.9	12.1	-	11.0	9.5	9.7	9.7	8.1	6.8	7.3	7.3	216
229	-	-	11.2	11.7	-	10.3	8.8	9.0	9.0	7.5	6.2	6.6	6.8	229
243	-	-	-	-	-	9.6	8.1	8.3	-	6.8	5.7	5.9	6.1	243
256	-	-	-	-	-	9.2	7.7	7.9	-	6.3	5.0	5.2	5.7	256
266	-	-	-	-	-	-	7.2	7.4	-	5.9	4.8	5.0	-	266
269	-	-	-	-	-	-	7.2	-	-	5.9	4.6	4.8	-	269
279	-	-	-	-	-	-	5.0	-	-	5.5	4.4	4.6	-	279
282	-	-	-	-	-	-	-	-	-	5.5	4.1	4.4	-	282
295	-	-	-	-	-	-	-	-	-	4.6	3.9	4.1	-	295
305	-	-	-	-	-	-	-	-	-	-	3.7	3.9	-	305
308	-	-	-	-	-	-	-	-	-	-	3.5	-	-	308

183.7 ft Main boom														
Radius ft	49.2 ft	68.9 ft	85.0 ft			Fly jib				143.1 ft	162.7 ft			Radius ft
	0°	0°	0°	20°	40°	103.7 ft	123.4 ft			0°	0°	20°	40°	
	1,000 lb													
49	43.7	-	-	-	-	-	-	-	-	-	-	-	-	49
52	42.3	36.1	-	-	-	-	-	-	-	-	-	-	-	52
56	40.6	34.5	29.7	-	-	-	-	-	-	-	-	-	-	56
59	39.2	33.5	28.8	-	-	25.8	-	-	-	-	-	-	-	59
65	36.8	31.5	27.2	-	-	24.3	20.5	-	-	-	-	-	-	65
69	35.4	30.1	26.2	23.3	-	23.5	20.0	-	-	16.7	-	-	-	69
72	34.4	29.3	25.6	22.7	-	22.9	19.6	-	-	16.5	12.1	-	-	72
79	32.1	27.4	23.9	21.5	20.6	21.5	18.7	-	-	15.8	11.8	-	-	79
85	30.5	25.8	22.7	20.5	19.8	20.5	17.8	-	-	15.2	11.4	-	-	85
92	28.8	24.4	21.5	19.3	18.9	19.3	17.1	14.9	-	14.5	11.2	-	-	92
98	27.4	23.0	20.5	18.5	18.1	18.3	16.3	14.3	-	13.9	10.8	-	-	98
111	24.8	20.8	18.6	16.8	16.5	16.6	14.6	13.0	12.6	12.6	10.1	9.9	-	111
124	22.8	18.8	17.0	15.5	15.2	15.0	13.0	11.9	11.5	11.5	9.3	9.0	8.6	124
138	20.6	17.1	15.4	14.0	14.0	13.6	11.6	11.0	10.5	10.1	8.5	8.1	7.9	138
151	19.1	15.6	14.3	13.0	13.0	12.5	10.5	9.9	9.6	9.2	7.7	7.4	7.0	151
164	17.6	14.3	13.0	12.1	12.1	11.4	9.4	9.2	9.0	8.1	6.8	6.6	6.3	164
177	16.3	13.2	12.1	11.2	11.4	10.8	8.8	8.3	8.3	7.5	6.1	5.9	5.7	177
190	15.0	12.3	11.2	10.3	10.8	9.9	8.1	7.7	7.7	6.6	5.5	5.3	5.3	190
203	13.7	11.4	10.6	9.9	-	9.2	7.5	7.0	7.2	6.1	4.8	4.6	4.6	203
216	12.4	10.6	9.9	9.2	-	8.6	7.0	6.6	6.8	5.5	4.2	4.2	4.2	216
229	-	9.9	9.2	8.8	-	7.9	6.4	5.9	6.4	4.8	3.7	3.7	3.7	229
243	-	-	8.7	-	-	7.4	5.9	5.5	-	4.4	3.2	3.2	-	243
256	-	-	-	-	-	7.0	5.5	5.2	-	3.9	-	-	-	256
269	-	-	-	-	-	6.6	5.2	4.8	-	3.5	-	-	-	269
279	-	-	-	-	-	-	5.0	4.8	-	-	-	-	-	279
282	-	-	-	-	-	-	5.0	-	-	-	-	-	-	282
289	-	-	-	-	-	-	3.9	-	-	-	-	-	-	289
292	-	-	-	-	-	-	3.3	-	-	-	-	-	-	292
305	-	-	-	-	-	-	-	-	-	-	-	-	-	305

STERLING CRANE

Lifting capacities fixed fly jib (SF)

180,800 lb   360° 85%

170.3 ft Main boom																		
Radius ft	49.2 ft		68.9 ft		85.0 ft			Fly jib 103.7 ft			123.4 ft			143.1 ft	162.7 ft			Radius ft
	0°		0°		0°	20°	40°	0°			0°	20°	40°	0°	0°	20°	40°	
1,000 lb																		
46	54.8	-	-	-	-	-	-	-	-	-	-	-	-	-	-	-	46	
49	53.0	45.0	-	-	-	-	-	-	-	-	-	-	-	-	-	-	49	
52	51.2	43.6	38.9	-	-	-	-	-	-	-	-	-	-	-	-	-	52	
59	47.4	40.8	36.3	-	-	-	31.9	-	-	-	-	-	-	-	-	-	59	
65	44.4	38.3	34.5	31.6	-	-	30.7	24.9	-	-	-	21.6	-	-	-	-	65	
72	41.3	35.7	32.4	30.0	-	-	29.3	24.0	-	-	-	20.9	16.3	-	-	-	72	
79	38.4	33.4	30.3	28.5	25.3	-	27.9	23.3	-	-	-	20.4	16.3	-	-	-	79	
85	36.2	31.6	28.9	27.1	24.9	-	26.7	22.5	-	-	-	19.8	16.1	-	-	-	85	
92	34.1	29.7	27.3	25.9	24.4	-	25.3	21.5	18.9	-	-	19.1	15.8	-	-	-	92	
98	32.3	28.1	25.8	24.7	23.8	-	24.1	20.9	18.5	-	-	18.5	15.4	-	-	-	98	
111	29.2	25.2	23.4	22.5	22.3	-	21.9	19.2	17.4	14.9	-	17.2	14.8	13.9	-	-	111	
124	26.3	22.8	21.2	20.3	20.5	-	19.7	17.5	16.3	14.5	-	15.7	13.7	12.6	12.8	-	124	
138	24.0	20.4	19.1	18.4	18.7	-	17.8	15.8	15.1	14.0	-	14.3	12.5	11.6	11.8	-	138	
151	22.0	18.7	17.6	16.9	17.1	-	16.3	14.3	14.1	13.4	-	13.0	11.4	10.7	11.0	-	151	
164	18.0	17.2	16.0	15.6	15.6	-	14.9	13.2	13.0	12.7	-	11.9	10.3	9.9	10.1	-	164	
177	14.8	15.2	15.0	14.5	14.5	-	13.9	12.1	12.1	12.1	-	10.8	9.2	9.2	9.2	-	177	
190	11.9	12.4	13.7	13.6	-	-	12.8	11.2	11.2	11.2	-	9.7	8.3	8.6	8.6	-	190	
203	9.5	9.9	11.3	11.9	-	-	11.9	10.3	10.3	10.3	-	9.0	7.7	7.9	7.9	-	203	
216	-	8.0	9.3	9.7	-	-	9.7	9.5	9.7	9.7	-	8.1	6.8	7.3	7.3	-	216	
229	-	-	7.3	7.8	-	-	8.0	8.2	9.0	9.0	-	7.5	6.2	6.6	6.8	-	229	
243	-	-	-	-	-	-	6.3	6.5	7.4	-	-	5.9	5.7	5.9	6.1	-	243	
256	-	-	-	-	-	-	4.8	5.0	5.7	-	-	4.3	4.4	5.2	5.7	-	256	
266	-	-	-	-	-	-	-	4.1	4.6	-	-	-	-	4.3	-	-	266	
269	-	-	-	-	-	-	-	3.7	-	-	-	-	-	3.9	-	-	269	
279	-	-	-	-	-	-	-	-	-	-	-	-	-	-	-	-	279	

183.7 ft Main boom																		
Radius ft	49.2 ft		68.9 ft		85.0 ft			Fly jib 103.7 ft			123.4 ft			143.1 ft	162.7 ft			Radius ft
	0°		0°		0°	20°	40°	0°			0°	20°	40°	0°	0°	20°	40°	
1,000 lb																		
49	43.7	-	-	-	-	-	-	-	-	-	-	-	-	-	-	-	49	
52	42.3	36.1	-	-	-	-	-	-	-	-	-	-	-	-	-	-	52	
56	40.6	34.5	29.7	-	-	-	-	-	-	-	-	-	-	-	-	-	56	
59	39.2	33.5	28.8	-	-	-	25.8	-	-	-	-	-	-	-	-	-	59	
65	36.8	31.5	27.2	-	-	-	24.3	20.5	-	-	-	-	-	-	-	-	65	
69	35.4	30.1	26.2	23.3	-	-	23.5	20.0	-	-	-	16.7	-	-	-	-	69	
72	34.4	29.3	25.6	22.7	-	-	22.9	19.6	-	-	-	16.5	12.1	-	-	-	72	
79	32.1	27.4	23.9	21.5	20.6	-	21.5	18.7	-	-	-	15.8	11.8	-	-	-	79	
85	30.5	25.8	22.7	20.5	19.8	-	20.5	17.8	-	-	-	15.2	11.4	-	-	-	85	
92	28.8	24.4	21.5	19.3	18.9	-	19.3	17.1	14.9	-	-	14.5	11.2	-	-	-	92	
98	27.4	23.0	20.5	18.5	18.1	-	18.3	16.3	14.3	-	-	13.9	10.8	-	-	-	98	
111	24.8	20.8	18.6	16.8	16.5	-	16.6	14.6	13.0	12.6	-	12.6	10.1	9.9	-	-	111	
124	22.8	18.8	17.0	15.5	15.2	-	15.0	13.0	11.9	11.5	-	11.5	9.3	9.0	8.6	-	124	
138	20.6	17.1	15.4	14.0	14.0	-	13.6	11.6	11.0	10.5	-	10.1	8.5	8.1	7.9	-	138	
151	19.1	15.6	14.3	13.0	13.0	-	12.5	10.5	9.9	9.6	-	9.2	7.7	7.4	7.0	-	151	
164	17.6	14.3	13.0	12.1	12.1	-	11.4	9.4	9.2	9.0	-	8.1	6.8	6.6	6.3	-	164	
177	14.3	13.2	12.1	11.2	11.4	-	10.8	8.8	8.3	8.3	-	7.5	6.1	5.9	5.7	-	177	
190	11.7	11.9	11.2	10.3	10.8	-	9.9	8.1	7.7	7.7	-	6.6	5.5	5.3	5.3	-	190	
203	9.3	9.5	10.6	9.9	-	-	9.2	7.5	7.0	7.2	-	6.1	4.8	4.6	4.6	-	203	
216	7.1	7.5	8.6	9.2	-	-	8.6	7.0	6.6	6.8	-	5.5	4.2	4.2	4.2	-	216	
229	-	5.6	6.9	7.3	-	-	7.5	6.4	5.9	6.4	-	4.8	3.7	3.7	3.7	-	229	
243	-	-	5.2	-	-	-	5.7	5.9	5.5	-	-	4.4	3.2	3.2	-	-	243	
256	-	-	-	-	-	-	4.3	4.6	5.2	-	-	3.7	-	-	-	-	256	
269	-	-	-	-	-	-	-	-	3.9	-	-	-	-	-	-	-	269	
279	-	-	-	-	-	-	-	-	-	-	-	-	-	-	-	-	279	

STERLING CRANE

Lifting capacities fixed fly jib (SF) with SSL

313,100 lb   360° 85 %

170.3 ft Main boom		Fly jib					Radius	
Radius	49.2 ft	103.7 ft	162.7 ft			Radius		
	0°	0°	0°	20°	40°			
ft		1,000 lb				ft		
36	80.5**	-	-	-	-	36		
39	78.1**	-	-	-	-	39		
46	72.7**	44.7**	-	-	-	46		
52	68.4**	42.5**	-	-	-	52		
59	64.1**	40.1**	-	-	-	59		
65	60.5**	38.3**	27.0**	-	-	65		
72	56.7**	36.4**	25.6**	-	-	72		
79	53.2**	34.5**	23.9**	-	-	79		
85	50.5*	33.1**	22.9**	-	-	85		
92	48.6*	31.4**	21.5**	16.7*	-	92		
98	47.0*	30.2**	20.7**	16.3*	-	98		
111	43.1*	27.6**	18.8**	15.6*	14.5*	111		
124	39.4*	25.4**	17.0**	14.8*	13.7*	124		
138	36.1*	23.3**	15.6**	13.6*	12.7*	138		
151	33.2*	21.8**	14.3**	12.7*	11.9*	151		
164	30.6*	20.2**	13.2**	11.9*	11.2*	164		
177	28.4*	18.9**	12.3**	11.0*	10.8*	177		
190	22.4*	17.8**	11.4**	10.3*	10.1*	190		
203	-	17.0*	10.6**	9.9*	9.7*	203		
216	-	16.3*	9.9**	9.2*	9.2*	216		
229	-	15.6*	9.2**	8.8*	8.8*	229		
243	-	13.3*	8.8**	8.3*	8.3*	243		
256	-	7.2*	8.3**	7.9*	7.9*	256		
269	-	-	7.9**	7.4*	-	269		
282	-	-	7.5**	7.2*	-	282		
295	-	-	6.4**	7.0*	-	295		
305	-	-	-	5.3*	-	305		

183.7 ft Main boom		Fly jib					Radius	
Radius	49.2 ft	103.7 ft	162.7 ft			Radius		
	0°	0°	0°	20°	40°			
ft		1,000 lb				ft		
39	71.4**	-	-	-	-	39		
46	66.5**	-	-	-	-	46		
49	64.7**	41.0**	-	-	-	49		
52	62.9**	40.2**	-	-	-	52		
59	58.8**	38.5**	-	-	-	59		
65	55.8**	37.1**	-	-	-	65		
69	53.9**	36.3**	25.3**	-	-	69		
72	52.5**	35.5**	24.9**	-	-	72		
79	49.4**	34.1**	23.5**	-	-	79		
85	46.8**	32.7**	22.5**	-	-	85		
92	44.0**	31.0**	21.1**	13.2*	-	92		
98	42.0**	29.8**	20.1**	13.2*	-	98		
111	38.0*	27.2**	18.1**	12.8*	-	111		
124	35.8*	25.0**	16.4**	12.5*	11.7*	124		
138	33.6*	22.9**	14.9**	11.8*	11.2*	138		
151	31.2*	21.3**	13.6**	11.2*	10.5*	151		
164	28.8*	19.8**	12.7**	10.5*	9.9*	164		
177	26.7*	18.5**	11.6**	9.9*	9.4*	177		
190	24.7*	17.2**	10.8**	9.2*	8.8*	190		
203	18.7*	16.1**	9.9**	8.6*	8.3*	203		
216	-	15.2*	9.2**	7.9*	7.9*	216		
229	-	14.5*	8.6**	7.5*	7.5*	229		
243	-	14.0*	7.9**	7.0*	7.0*	243		
256	-	10.9*	7.4**	6.6*	6.6*	256		
269	-	5.0*	7.0**	6.3*	6.3*	269		
282	-	-	6.6**	6.1*	-	282		
295	-	-	6.3**	5.7*	-	295		
308	-	-	4.4**	5.5*	-	308		
315	-	-	-	-	-	315		

* SSL 0°
 ** SSL 30°

STERLING CRANE

Lifting capacities fixed fly jib (SF) with SSL

269,000 lb   360° 85%

170.3 ft Main boom		Fly jib					162.7 ft	
Radius	49.2 ft	103.7 ft	0°			Radius		
ft	0°	0°	0°	20°	40°	ft		
		1,000 lb						
36	80.5 **	-	-	-	-	36		
39	78.1 **	-	-	-	-	39		
46	72.7 **	44.7 **	-	-	-	46		
52	68.4 **	42.5 **	-	-	-	52		
59	64.1 **	40.1 **	-	-	-	59		
65	60.5 **	38.3 **	27.0 **	-	-	65		
72	56.7 **	36.4 **	25.6 **	-	-	72		
79	53.2 **	34.5 **	23.9 **	-	-	79		
85	50.5 *	33.1 **	22.9 **	-	-	85		
92	48.6 *	31.4 **	21.5 **	16.7 *	-	92		
98	47.0 *	30.2 **	20.7 **	16.3 *	-	98		
111	43.1 *	27.6 **	18.8 **	15.6 *	14.5 *	111		
124	39.4 *	25.4 **	17.0 **	14.8 *	13.7 *	124		
138	36.0 *	23.3 **	15.6 **	13.6 *	12.7 *	138		
151	31.9 *	21.8 **	14.3 **	12.7 *	11.9 *	151		
164	27.1 *	20.2 **	13.2 **	11.9 *	11.2 *	164		
177	22.9 *	18.9 **	12.3 **	11.0 *	10.8 *	177		
190	19.4 *	17.8 **	11.4 **	10.3 *	10.1 *	190		
203	-	17.0 *	10.6 **	9.9 *	9.7 *	203		
216	-	16.3 *	9.9 **	9.2 *	9.2 *	216		
229	-	14.6 *	9.2 **	8.8 *	8.8 *	229		
243	-	12.2 *	8.8 **	8.3 *	8.3 *	243		
256	-	7.2 *	8.3 **	7.9 *	7.9 *	256		
269	-	-	7.9 **	7.4 *	-	269		
282	-	-	7.2 **	7.2 *	-	282		
295	-	-	5.9 **	6.6 *	-	295		
305	-	-	-	5.3 *	-	305		

183.7 ft Main boom		Fly jib				
ft		1,000 lb	0°			ft
			0°	20°	40°	
39	71.4 **	-	-	-	-	39
46	66.5 **	-	-	-	-	46
49	64.7 **	41.0 **	-	-	-	49
52	62.9 **	40.2 **	-	-	-	52
59	58.8 **	38.5 **	-	-	-	59
65	55.8 **	37.1 **	-	-	-	65
69	53.9 **	36.3 **	25.3 **	-	-	69
72	52.5 **	35.5 **	24.9 **	-	-	72
79	49.4 **	34.1 **	23.5 **	-	-	79
85	46.8 **	32.7 **	22.5 **	-	-	85
92	44.0 **	31.0 **	21.1 **	13.2 *	-	92
98	42.0 **	29.8 **	20.1 **	13.2 *	-	98
111	38.0 *	27.2 **	18.1 **	12.8 *	-	111
124	35.8 *	25.0 **	16.4 **	12.5 *	11.7 *	124
138	33.6 *	22.9 **	14.9 **	11.8 *	11.2 *	138
151	31.2 *	21.3 **	13.6 **	11.2 *	10.5 *	151
164	26.9 *	19.8 **	12.7 **	10.5 *	9.9 *	164
177	22.7 *	18.5 **	11.6 **	9.9 *	9.4 *	177
190	19.4 *	17.2 **	10.8 **	9.2 *	8.8 *	190
203	16.4 *	16.1 **	9.9 **	8.6 *	8.3 *	203
216	-	15.0 **	9.2 **	7.9 *	7.9 *	216
229	-	14.1 **	8.6 **	7.5 *	7.5 *	229
243	-	12.0 **	7.9 **	7.0 *	7.0 *	243
256	-	10.3 **	7.4 **	6.6 *	6.6 *	256
269	-	5.0 **	7.0 **	6.3 *	6.3 *	269
282	-	-	6.6 **	6.1 *	-	282
295	-	-	5.3 **	5.7 *	-	295
308	-	-	4.2 **	4.8 *	-	308
315	-	-	-	-	-	315