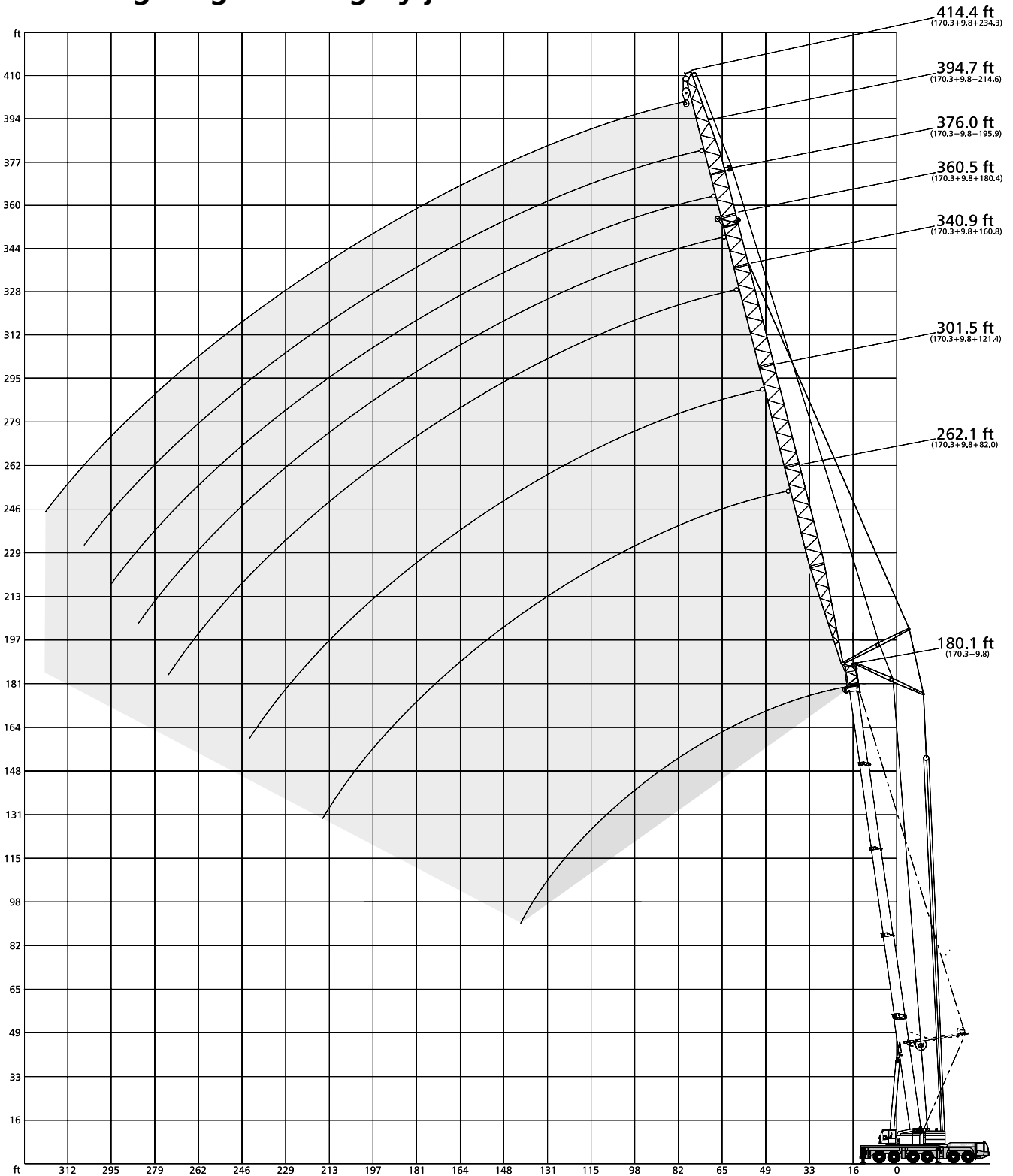




LIFTING CHARTS - All Terrain Cranes

DEMAG MODEL AC 350 - 400 TON CAPACITY

Working ranges luffing fly jib with / without SSL



Lifting capacities luffing fly jib

269,000 lb   360° 85%

56.4 ft* Main boom								
		Fly jib						
Radius	82.0	121.4	160.8	180.5	196.5	215.2	234.9	Radius
ft	1,000 lb						ft	
39	147.8	-	-	-	-	-	-	39
46	145.4	98.3	-	-	-	-	-	46
52	139.3	96.6	60.0	-	-	-	-	52
59	132.3	94.8	59.3	46.9	-	-	-	59
65	124.2	93.2	58.9	46.5	36.8	30.2	-	65
72	112.7	91.1	58.4	46.0	36.8	29.9	22.4	72
79	92.3	89.2	57.9	45.6	36.5	29.5	22.0	79
85	-	87.3	57.3	45.2	36.3	29.3	21.8	85
92	-	82.5	56.8	44.5	36.1	29.0	21.3	92
98	-	75.6	56.4	43.9	35.9	28.8	21.1	98
111	-	56.3	55.3	42.3	35.0	28.0	20.5	111
124	-	-	53.1	40.8	34.4	27.3	19.8	124
138	-	-	45.6	36.9	33.4	26.6	19.1	138
151	-	-	34.7	33.2	31.7	25.7	18.5	151
164	-	-	-	29.9	29.9	24.4	17.6	164
177	-	-	-	-	27.3	23.3	16.9	177
190	-	-	-	-	22.3	22.5	16.3	190
203	-	-	-	-	-	21.8	15.8	203
216	-	-	-	-	-	-	15.2	216
226	-	-	-	-	-	-	14.9	226
239	-	-	-	-	-	-	-	239

71.8 ft* Main boom								
		Fly jib						
Radius	82.0	121.4	160.8	180.5	196.5	215.2	234.9	Radius
ft	1,000 lb						ft	
42	137.5	-	-	-	-	-	-	42
46	132.2	88.6	-	-	-	-	-	46
52	128.2	87.1	-	-	-	-	-	52
59	121.3	85.7	53.3	42.1	-	-	-	59
65	115.2	84.5	52.9	41.9	34.1	-	-	65
72	104.5	82.9	52.4	41.4	33.9	27.3	-	72
79	93.2	81.2	52.2	41.2	33.9	27.1	20.0	79
85	82.9	79.6	51.8	40.8	33.7	27.1	19.8	85
92	-	76.5	51.3	40.3	33.5	26.8	19.6	92
98	-	70.5	50.9	39.9	33.3	26.6	19.4	98
111	-	57.2	49.8	38.6	32.8	26.2	18.7	111
124	-	-	46.2	37.5	32.2	25.6	18.3	124
138	-	-	40.4	35.2	31.7	25.1	17.6	138
151	-	-	35.0	32.6	29.9	24.4	17.1	151
164	-	-	-	29.9	28.4	23.8	16.7	164
177	-	-	-	27.3	26.6	22.9	16.1	177
190	-	-	-	-	24.9	22.2	15.6	190
203	-	-	-	-	-	21.4	15.2	203
216	-	-	-	-	-	-	14.7	216
229	-	-	-	-	-	-	14.3	229
239	-	-	-	-	-	-	-	239

* incl. 9.8 ft adapter

Lifting capacities luffing fly jib

269,000 lb   360° 85%

87.2 ft* Main boom								
Fly jib								
Radius	82.0	121.4	160.8	180.5	196.5	215.2	234.9	Radius
ft	1,000 lb							ft
46	123.3	-	-	-	-	-	-	46
52	117.3	77.8	-	-	-	-	-	52
59	110.2	76.7	47.1	-	-	-	-	59
65	105.6	75.7	46.7	37.0	30.8	-	-	65
72	99.5	74.5	46.5	36.8	30.8	24.6	-	72
79	93.2	73.3	46.2	36.5	30.8	24.6	18.0	79
85	87.8	72.1	46.0	36.3	30.8	24.4	17.8	85
92	-	70.9	45.6	36.1	30.8	24.4	17.6	92
98	-	67.2	45.4	35.7	30.8	24.4	17.4	98
111	-	56.6	44.7	35.0	30.4	24.0	17.2	111
124	-	45.9	42.8	34.4	30.2	23.8	16.7	124
138	-	-	38.5	33.0	29.7	23.3	16.3	138
151	-	-	34.5	31.2	28.8	23.1	15.8	151
164	-	-	-	29.3	27.5	22.4	15.6	164
177	-	-	-	27.5	26.4	22.0	15.2	177
190	-	-	-	-	25.1	21.6	14.7	190
203	-	-	-	-	-	21.1	14.3	203
216	-	-	-	-	-	-	14.1	216
229	-	-	-	-	-	-	13.6	229

118.1 ft* Main boom								
Fly jib								
Radius	82.0	121.4	160.8	180.5	196.5	215.2	234.9	Radius
ft	1,000 lb							ft
52	92.9	-	-	-	-	-	-	52
59	88.2	57.1	-	-	-	-	-	59
65	83.7	56.8	34.6	-	-	-	-	65
72	78.6	56.6	34.3	27.1	22.0	-	-	72
79	74.6	56.2	34.3	27.1	22.0	19.8	-	79
85	72.6	55.7	34.1	27.1	22.0	19.8	13.8	85
92	70.0	55.1	34.1	27.1	22.0	19.8	13.8	92
98	-	54.7	33.9	27.1	22.0	19.8	13.6	98
111	-	51.0	33.7	27.1	22.0	19.8	13.6	111
124	-	46.3	33.5	27.1	22.0	19.8	13.4	124
138	-	-	32.3	27.1	22.0	19.8	13.2	138
151	-	-	31.0	27.1	22.0	19.8	13.2	151
164	-	-	29.5	26.8	22.0	19.8	13.0	164
177	-	-	-	26.8	22.0	19.8	12.7	177
190	-	-	-	-	22.0	19.8	12.7	190
203	-	-	-	-	22.0	19.8	12.5	203
216	-	-	-	-	-	19.8	12.5	216
229	-	-	-	-	-	-	12.3	229
239	-	-	-	-	-	-	12.3	239

* incl. 9.8 ft adapter

Lifting capacities luffing fly jib

269,000 lb   360° 85%

133.5 ft* Main boom

Radius ft	Fly jib							Radius ft
	82.0	121.4	160.8	180.5	196.5	215.2	234.9	
	1,000 lb							
59	74.7	46.9	-	-	-	-	-	59
65	72.3	46.9	-	-	-	-	-	65
72	69.3	46.9	28.2	-	-	-	-	72
79	66.2	46.9	28.2	24.0	19.8	-	-	79
85	64.2	46.7	28.2	24.0	19.8	15.6	-	85
92	62.1	46.7	28.2	24.0	19.8	15.6	11.6	92
98	-	46.5	28.2	24.0	19.8	15.6	11.6	98
111	-	45.6	28.2	24.0	19.8	15.6	11.6	111
124	-	43.9	28.2	24.0	19.8	15.6	11.6	124
138	-	-	28.2	24.0	19.8	15.6	11.6	138
151	-	-	28.2	24.0	19.8	15.6	11.6	151
164	-	-	28.2	24.0	19.8	15.6	11.6	164
177	-	-	-	24.0	19.8	15.6	11.6	177
190	-	-	-	24.0	19.8	15.6	11.6	190
203	-	-	-	-	19.8	15.6	11.6	203
216	-	-	-	-	-	15.6	11.6	216
229	-	-	-	-	-	-	11.6	229
243	-	-	-	-	-	-	11.6	243
256	-	-	-	-	-	-	-	256

148.9 ft* Main boom

Radius ft	Fly jib							Radius ft
	82.0	121.4	160.8	180.5	196.5	215.2	234.9	
	1,000 lb							
59	59.0	-	-	-	-	-	-	59
65	59.0	36.8	-	-	-	-	-	65
72	56.7	36.8	23.1	-	-	-	-	72
79	54.3	36.8	23.1	18.5	-	-	-	79
85	52.5	36.8	23.1	18.5	16.3	11.9	-	85
92	50.4	36.8	23.1	18.5	16.3	11.9	8.3	92
98	48.8	36.6	23.1	18.5	16.3	11.9	8.3	98
111	-	36.5	23.1	18.5	16.3	11.9	8.3	111
124	-	35.7	23.1	18.5	16.3	11.9	8.3	124
138	-	-	23.1	18.5	16.3	11.9	8.3	138
151	-	-	23.1	18.5	16.3	11.9	8.3	151
164	-	-	23.1	18.5	16.3	11.9	8.3	164
177	-	-	-	18.5	16.0	11.9	8.3	177
190	-	-	-	18.5	16.0	11.9	8.3	190
203	-	-	-	-	15.8	11.9	8.3	203
216	-	-	-	-	-	11.9	8.3	216
229	-	-	-	-	-	11.9	8.3	229
243	-	-	-	-	-	-	8.3	243
256	-	-	-	-	-	-	-	256

* incl. 9.8 ft adapter

Lifting capacities luffing fly jib

269,000 lb   360° 85%

164.3 ft* Main boom								
Fly jib								
Radius	82.0	121.4	160.8	180.5	196.5	215.2	234.9	Radius
ft	1,000 lb							ft
65	44.5	26.6	-	-	-	-	-	65
72	44.1	26.6	-	-	-	-	-	72
79	43.4	26.6	18.0	-	-	-	-	79
85	42.8	26.6	18.0	14.3	11.0	-	-	85
92	41.6	26.6	18.0	14.3	11.0	7.9	-	92
98	40.4	26.6	18.0	14.3	11.0	7.9	5.0	98
111	-	26.6	18.0	14.3	11.0	7.9	5.0	111
124	-	26.6	18.0	14.3	11.0	7.9	5.0	124
138	-	26.6	18.0	14.3	11.0	7.9	5.0	138
151	-	-	18.0	14.3	11.0	7.9	5.0	151
164	-	-	18.0	14.3	11.0	7.9	5.0	164
177	-	-	18.0	14.3	11.0	7.9	5.0	177
190	-	-	-	14.3	11.0	7.9	5.0	190
203	-	-	-	-	11.0	7.9	5.0	203
216	-	-	-	-	-	7.9	5.0	216
229	-	-	-	-	-	7.9	5.0	229
243	-	-	-	-	-	-	5.0	243

180.1 ft* Main boom								
Fly jib								
Radius	82.0	121.4	160.8	180.5	196.5	215.2	234.9	Radius
ft	1,000 lb							ft
69	33.0	18.7	-	-	-	-	-	69
72	33.0	18.7	-	-	-	-	-	72
79	33.0	18.7	12.1	-	-	-	-	79
85	33.0	18.7	12.1	9.9	-	-	-	85
92	33.0	18.7	12.1	9.9	7.2	4.4	-	92
98	31.8	18.7	12.1	9.9	7.2	4.4	-	98
111	-	18.7	12.1	9.9	7.2	4.4	-	111
124	-	18.7	12.1	9.9	7.2	4.4	-	124
138	-	18.7	12.1	9.9	7.2	4.4	-	138
151	-	-	12.1	9.9	7.2	4.4	-	151
164	-	-	12.1	9.9	7.2	4.4	-	164
177	-	-	12.1	9.9	7.2	4.4	-	177
190	-	-	-	9.9	7.2	4.4	-	190
203	-	-	-	-	7.2	4.4	-	203
216	-	-	-	-	-	4.4	-	216
229	-	-	-	-	-	4.4	-	229
243	-	-	-	-	-	-	-	243

* incl. 9.8 ft adapter

STERLING CRANE

Lifting capacities luffing fly jib with SSL

224,900 lb   360° 85%

164.3 ft Main boom

Radius ft	Fly jib							Radius ft	
	ft	82.0	121.4	160.8	180.5	196.5	215.2		234.9
					1,000 lb				
65		46.3	40.1	-	-	-	-	-	65
72		43.6	26.9	30.6	-	-	-	-	72
79		41.4	35.9	29.3	26.2	-	-	-	79
85		39.4	33.9	27.3	25.1	21.3	17.6	-	85
92		37.7	31.9	26.6	24.2	20.7	16.9	13.0	92
98		36.1	30.2	25.3	23.3	20.0	16.3	12.5	98
105		-	28.6	24.2	22.4	19.6	15.6	12.1	105
111		-	27.1	23.1	21.3	18.9	15.2	11.9	111
118		-	26.6	22.0	20.5	18.3	14.7	11.4	118
124		-	26.6	20.9	19.8	17.6	14.3	11.2	124
131		-	26.6	20.0	18.9	16.9	13.8	11.0	131
138		-	26.6	19.1	18.0	16.5	13.6	10.8	138
144		-	-	18.3	17.4	15.8	13.2	10.5	144
151		-	-	18.0	16.7	15.4	13.0	10.3	151
157		-	-	18.0	16.0	14.9	12.7	10.3	157
164		-	-	18.0	15.6	14.3	12.5	10.1	164
170		-	-	18.0	14.9	13.8	12.3	9.9	170
177		-	-	18.0	14.5	13.6	12.1	9.9	177
184		-	-	-	14.3	13.2	11.9	9.9	184
190		-	-	-	14.3	13.0	11.6	9.9	190
197		-	-	-	14.3	12.7	11.4	9.7	197
203		-	-	-	-	12.5	11.2	9.7	203
210		-	-	-	-	12.3	11.0	9.7	210
216		-	-	-	-	-	7.9	9.4	216
223		-	-	-	-	-	-	9.4	223
229		-	-	-	-	-	-	9.2	229
243		-	-	-	-	-	-	9.0	243

180.1 ft Main boom

Radius ft	Fly jib							Radius ft	
	ft	82.0	121.4	160.8	180.5	196.5	215.2		234.9
					1,000 lb				
65		38.8	32.6	-	-	-	-	-	65
72		36.6	29.7	-	-	-	-	-	72
79		34.6	29.1	23.5	-	-	-	-	79
85		32.6	28.4	22.2	19.1	16.3	-	-	85
92		31.0	26.9	21.1	18.5	16.0	12.1	-	92
98		29.5	25.7	20.2	17.8	15.6	11.9	-	98
105		-	18.7	19.6	16.9	15.2	11.6	-	105
111		-	18.7	18.5	16.3	14.5	11.4	-	111
118		-	18.7	17.8	15.8	14.1	11.2	-	118
124		-	18.7	17.1	15.2	13.6	11.0	-	124
131		-	18.7	16.5	14.5	13.2	10.8	-	131
138		-	18.7	16.0	14.1	12.5	10.3	-	138
144		-	-	15.4	13.6	12.1	10.1	-	144
151		-	-	15.2	13.2	11.6	9.7	-	151
157		-	-	14.7	12.7	11.0	9.4	-	157
164		-	-	14.5	12.3	10.5	9.2	-	164
170		-	-	14.1	11.9	10.1	8.8	-	170
177		-	-	13.8	11.6	9.9	8.5	-	177
184		-	-	-	11.4	9.4	8.1	-	184
190		-	-	-	11.0	9.2	7.9	-	190
197		-	-	-	10.8	9.0	7.7	-	197
203		-	-	-	-	8.8	7.4	-	203
210		-	-	-	-	8.5	7.2	-	210
216		-	-	-	-	-	7.0	-	216
223		-	-	-	-	-	6.8	-	223
229		-	-	-	-	-	6.6	-	229
243		-	-	-	-	-	-	-	243