



## LIFTING CHARTS - All Terrain Cranes

### DEMAG MODEL AC 400 - 500 TON CAPACITY

## Specifications

### Axle loads and weights

Crane with main boom, outriggers and hook block

Axles

7 x 26,400 lb

Total weight

184,800 lb

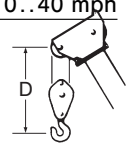
### Working speeds (infinitely variable)

Units	Line speed	Max. permissible line pull 1)	Length of hoist rope
Main hoist	max. 525 ft/min	110 kN	1542 ft
Secondary hoist	max. 525 ft/min	110 kN	1378 ft
Swing			max. 1,0 rpm
Telescoping speed			49 – 113 ft: 110 s 49 – 190 ft: 330 s
Boom elevation			-0,5° – +82°: 95 s

### Carrier performance

Travel speeds

0..40 mph



### Hook block/Single line hook

Type	Possible load	Number of sheaves	Number of lines	Weight	"D"
2 x 250 **)	880,000 lb	2 x 11	2 x 22	17,600 lb	14' 9"
2 x 250 **)	770,000 lb	2 x 11	2 x 17	17,600 lb	14' 9"
250 *)	506,000 lb	11	23	7,040 lb	9' 10"
160	323,400 lb	7	14	5,060 lb	9' 10"
125	257,000 lb	5	11	3,960 lb	9' 10"
80	167,200 lb	3	7	2,860 lb	9' 10"
40	72,600 lb	1	3	1,760 lb	8' 10"
12,5	24,200 lb	Crane hook	1	1,100 lb	6' 7"

\*) 5 add. sheaves

\*\*\*) 5 add. sheaves, with bridle