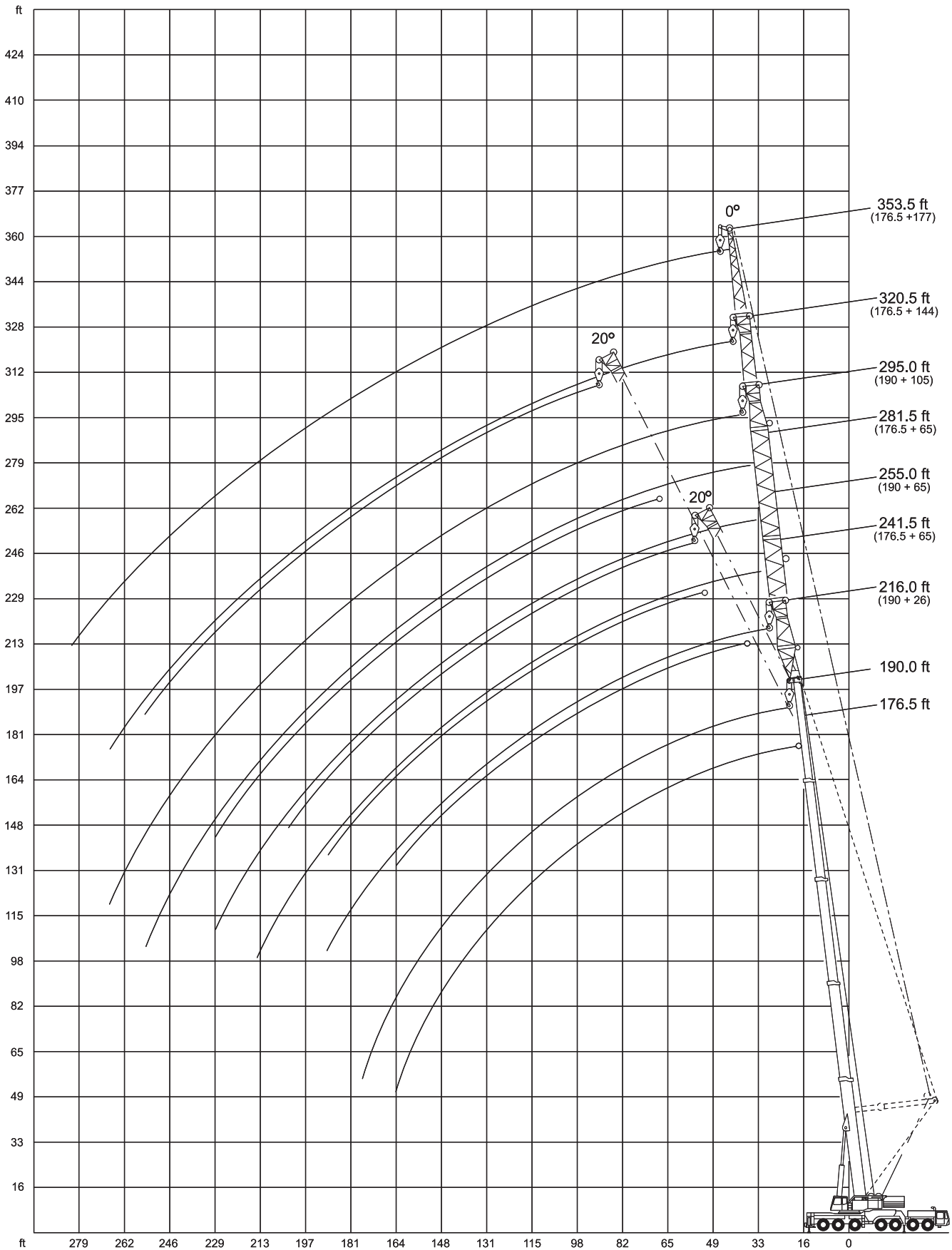




LIFTING CHARTS - All Terrain Cranes

DEMAG MODEL AC 400 - 500 TON CAPACITY

Working ranges fixed fly jib



Lifting capacities fixed fly jib in 1,000 lb

Main boom: 176.5 ft

211,500 lb  **360°** **85%**

Radius	Extension	
	65 ft	105 ft
	0°	0°
ft	1,000 lb	
52	36.2	-
59	34.4	26.4
65	32.9	25.2
72	31.3	23.8
79	29.9	22.6
85	28.7	21.6
92	27.5	20.7
98	26.5	19.8
105	25.3	18.9
111	24.5	18.1
118	23.3	17.2
124	22.5	16.6
131	21.4	15.8
138	20.6	15.1
144	19.8	14.5
151	18.9	13.8
157	18.1	13.2
164	17.4	12.7
177	15.8	11.4
190	14.3	10.6
203	12.8	9.7
216	11.5	8.6
229	-	7.7
243	-	6.8
256	-	5.7
269	-	-

154,000 lb  **360°** **85%**

Radius	Extension						
	65 ft		105 ft		144 ft		177 ft ¹⁾
	0°	20°	0°	20°	0°	20°	0°
ft	1,000 lb						
52	36.2	-	-	-	-	-	-
59	34.4	-	26.4	-	-	-	-
65	32.9	-	25.2	-	17.2	-	-
72	31.3	29.5	23.8	-	16.3	-	-
79	29.9	28.3	22.6	-	15.6	-	11.0
85	28.7	27.3	21.6	-	15.0	-	10.6
92	27.5	25.9	20.7	-	14.3	-	10.1
98	26.5	24.7	19.8	18.1	13.7	-	9.7
105	25.3	24.0	18.9	17.4	13.0	-	9.0
111	24.5	23.4	18.1	16.6	12.4	-	8.6
118	23.3	22.5	17.2	15.8	11.6	-	8.1
124	22.5	21.6	16.6	15.2	11.2	11.5	7.9
131	21.4	20.9	15.8	14.7	10.8	11.0	7.5
138	20.6	20.2	15.1	14.0	10.3	10.5	7.0
144	19.8	19.6	14.5	13.6	9.7	9.9	6.8
151	18.9	18.9	13.8	13.0	9.2	9.4	6.3
157	18.1	18.3	13.2	12.5	8.8	9.0	6.1
164	17.2	17.6	12.7	12.1	8.3	8.8	5.7
177	13.4	15.4	11.4	11.2	7.7	7.9	5.2
190	10.2	11.7	10.6	10.3	6.8	7.2	4.8
203	7.5	8.9	8.2	9.7	5.9	6.8	4.2
216	5.1	-	6.0	8.2	5.3	6.2	3.7
229	-	-	3.8	5.8	4.2	5.5	3.3
243	-	-	1.9	-	2.3	5.0	2.6
256	-	-	-	-	-	3.2	-

97,000 lb  **360°** **85%**

Radius	Extension							
	65 ft		105 ft		144 ft		177 ft ¹⁾	
	0°	20°	0°	20°	0°	20°	0°	20°
ft	1,000 lb							
52	36.2	-	-	-	-	-	-	-
59	34.4	-	26.4	-	-	-	-	-
65	32.9	-	25.2	-	17.2	-	-	-
72	31.3	29.5	23.8	-	16.3	-	-	-
79	29.9	28.3	22.6	-	15.6	-	11.0	-
85	28.7	27.3	21.6	-	15.0	-	10.6	-
92	27.5	25.9	20.7	-	14.3	-	10.1	-
98	26.5	24.7	19.8	18.1	13.7	-	9.7	-
105	25.3	24.0	18.9	17.4	13.0	-	9.0	-
111	24.5	23.4	18.1	16.6	12.4	-	8.6	-
118	22.9	22.5	17.2	15.8	11.6	-	8.1	-
124	20.1	21.6	16.6	15.2	11.2	11.5	7.9	-
131	17.0	20.7	15.8	14.7	10.8	11.0	7.5	-
138	14.4	17.9	15.1	14.0	10.3	10.5	7.0	-
144	12.4	15.5	13.3	13.6	9.7	9.9	6.8	-
151	10.1	12.9	11.2	13.0	9.2	9.4	6.3	-
157	8.3	11.1	9.4	12.5	8.8	9.0	6.1	-
164	6.4	9.0	7.5	11.6	8.1	8.8	5.7	-
177	3.5	5.5	4.4	8.2	5.3	7.9	5.2	-
190	-	2.7	2.0	5.3	2.7	7.2	4.8	-
203	-	-	-	2.5	-	4.5	2.5	-
216	-	-	-	-	-	2.2	-	-

1) max. wind speed 13.3 mph

STERLING CRANE

Lifting capacities fixed fly jib in 1,000 lb

Main boom: 190.0 ft

211,500 lb 360° 85%

Radius	Extension		
	26 ft		105 ft
	0°	0°	0°
ft	1,000 lb		
46	56.6	-	-
52	53.1	33.2	-
59	49.6	31.3	22.2
65	47.2	29.7	20.4
72	44.3	28.4	19.4
79	41.8	27.2	18.4
85	39.7	26.0	17.6
92	37.4	24.8	16.7
98	35.4	23.8	15.9
105	33.2	22.9	15.2
111	31.6	21.9	14.6
118	29.7	20.9	13.9
124	28.1	20.1	13.4
131	26.5	19.4	12.8
138	24.6	18.4	12.1
144	23.2	17.6	11.7
151	21.5	16.9	11.2
157	20.1	16.3	10.8
164	18.5	15.6	10.3
177	15.6	14.3	9.7
190	13.0	13.0	8.8
203	-	11.9	7.9
216	-	10.6	7.0
229	-	9.5	6.2
243	-	-	5.2
256	-	-	3.9

154,000 lb 360° 85%

Radius	Extension				
	26 ft		65 ft		105 ft
	0°	20°	0°	20°	0°
ft	1,000 lb				
46	56.6	-	-	-	-
52	53.1	51.1	33.2	-	-
59	49.6	47.8	31.3	-	22.2
65	47.2	45.6	29.7	-	20.4
72	44.3	43.0	28.4	27.3	19.4
79	41.8	40.7	27.2	25.9	18.4
85	39.7	38.8	26.0	25.1	17.6
92	37.4	36.7	24.8	24.0	16.7
98	35.4	34.9	23.8	23.2	15.9
105	33.2	33.0	22.9	22.2	15.2
111	31.6	31.6	21.9	21.4	14.6
118	29.7	29.7	20.9	20.5	13.9
124	28.1	28.3	20.1	19.9	13.4
131	26.5	26.7	19.4	19.2	12.8
138	24.6	25.2	18.4	18.2	12.1
144	22.1	23.0	17.6	17.6	11.7
151	19.3	20.2	16.6	16.9	11.2
157	17.1	18.2	16.3	16.3	10.8
164	14.7	15.6	15.6	15.6	10.3
177	11.0	11.7	13.0	14.3	9.7
190	8.0	-	9.7	11.5	8.8
203	-	-	7.1	8.6	7.7
216	-	-	4.5	-	5.3
229	-	-	2.5	-	3.4

97,000 lb 360° 85%

Radius	Extension				
	26 ft		65 ft		105 ft
	0°	20°	0°	20°	0°
ft	1,000 lb				
46	56.6	-	-	-	-
52	53.1	51.1	33.2	-	-
59	49.6	47.8	31.3	-	22.2
65	47.2	45.6	29.7	-	20.4
72	44.3	43.0	28.4	27.3	19.4
79	41.8	40.7	27.2	25.9	18.4
85	39.7	38.8	26.0	25.1	17.6
92	37.3	36.7	24.8	24.0	16.7
98	32.9	34.9	23.8	23.2	15.9
105	27.9	30.1	22.9	22.2	15.2
111	24.3	26.1	21.9	21.4	14.6
118	20.3	22.1	20.9	20.5	13.9
124	17.5	19.0	19.5	19.9	13.4
131	14.6	15.7	16.6	19.2	12.8
138	11.8	13.1	13.8	17.5	12.1
144	9.6	10.9	11.8	15.1	11.7
151	7.4	8.5	9.6	12.7	10.5
157	5.8	6.9	7.8	10.9	8.9
164	3.9	4.8	5.9	8.8	7.0
177	-	-	3.1	5.3	4.0
190	-	-	-	2.2	-