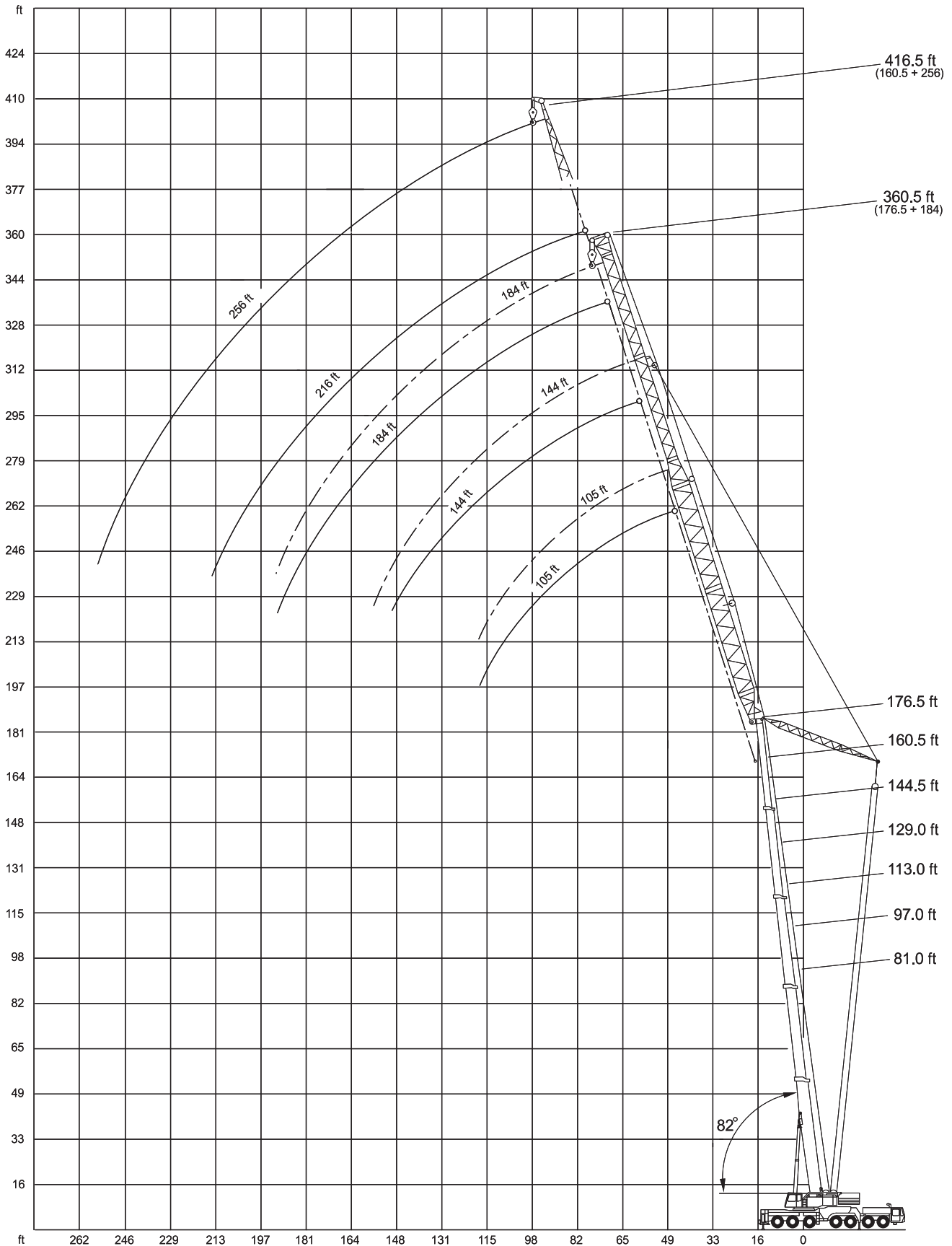




LIFTING CHARTS - All Terrain Cranes

DEMAG MODEL AC 400 - 500 TON CAPACITY

Working ranges luffing fly jib, main boom 82°



STERLING CRANE

Lifting capacities luffing fly jib, main boom 82° in 1,000 lb

211,500 lb  **360°** **75%**

Boom	Radius	Fly Jib					
		65 ft ¹⁾	105 ft ²⁾	144 ft	184 ft	216 ft ³⁾	256 ft ³⁾
1,000 lb							
	ft						
	42	177.0	-	-	-	-	-
	46	177.0	119.0	-	-	-	-
	52	158.0	118.0	-	-	-	-
	59	136.5	115.5	72.5	-	-	-
	65	120.5	112.5	70.5	-	-	-
	72	106.0	106.0	68.0	43.2	-	-
	79	-	98.5	66.0	42.5	30.5	-
	85	-	92.5	65.0	41.9	29.3	-
	92	-	84.5	63.5	41.4	28.2	-
	98	-	77.5	61.5	41.0	27.3	-
81.0 ft	105	-	64.5	59.9	40.3	26.0	-
	111	-	-	58.5	39.7	25.0	-
	118	-	-	57.3	39.2	24.0	-
	124	-	-	54.7	38.6	23.2	-
	131	-	-	52.9	37.7	22.2	-
	138	-	-	47.8	37.0	21.3	-
	144	-	-	40.9	36.4	20.5	-
	151	-	-	-	35.2	19.8	-
	157	-	-	-	34.8	19.2	-
	164	-	-	-	34.3	18.5	-
	177	-	-	-	31.1	17.2	-
	190	-	-	-	-	16.5	-
	203	-	-	-	-	15.6	-
	52	-	101.0	-	-	-	-
	59	-	101.0	-	-	-	-
	65	-	101.0	63.0	-	-	-
	72	-	100.0	62.5	-	-	-
	79	-	95.0	61.5	37.8	-	-
	85	-	89.5	61.0	37.0	28.2	-
	92	-	83.5	60.0	36.3	27.0	-
	98	-	77.5	59.9	35.7	26.2	-
	105	-	70.5	59.0	35.2	25.1	-
	111	-	-	58.0	34.8	24.3	-
	118	-	-	57.1	34.3	23.1	-
	124	-	-	56.1	33.9	22.3	-
	131	-	-	52.5	33.7	21.4	-
	138	-	-	49.0	33.5	20.4	-
	144	-	-	45.2	33.3	19.6	-
	151	-	-	-	33.0	18.9	-
	157	-	-	-	32.8	18.1	-
	164	-	-	-	32.6	16.9	-
	177	-	-	-	32.4	16.1	-
	190	-	-	-	-	15.6	-
	203	-	-	-	-	15.4	-
	59	-	74.5	-	-	-	-
	65	-	71.5	48.5	-	-	-
	72	-	69.5	48.2	-	-	-
	79	-	67.0	47.3	30.3	-	-
	85	-	66.0	46.7	29.3	24.0	-
	92	-	64.0	45.8	28.2	22.6	17.6
	98	-	62.5	45.2	27.6	22.0	17.4
	105	-	61.5	44.5	26.8	21.3	17.1
	111	-	60.5	44.1	26.0	20.7	16.9
	118	-	-	43.4	25.3	20.2	16.7
	124	-	-	43.0	24.7	19.8	16.5
	131	-	-	42.3	24.2	19.4	16.3
	138	-	-	41.8	23.5	18.9	16.3
	144	-	-	41.4	23.1	18.5	16.1
	151	-	-	-	22.4	18.0	16.0
	157	-	-	-	22.0	17.8	15.8
	164	-	-	-	21.6	17.4	15.8
	177	-	-	-	20.7	16.7	15.6
	190	-	-	-	-	16.3	15.2
	203	-	-	-	-	15.8	14.9
	216	-	-	-	-	15.4	14.9
	229	-	-	-	-	-	14.7
	243	-	-	-	-	-	14.5

211,500 lb  **360°** **75%**

Boom	Radius	Fly Jib				
		105 ft ²⁾	144 ft	184 ft	216 ft ³⁾	256 ft ³⁾
1,000 lb						
	ft					
	59	64.0	-	-	-	-
	65	62.5	-	-	-	-
	72	60.5	45.6	-	-	-
	79	59.2	45.3	-	-	-
	85	57.8	44.7	29.3	-	-
	92	56.4	44.0	29.0	23.1	-
	98	55.2	43.2	28.8	22.3	15.4
	105	53.7	42.3	28.4	21.6	15.4
	111	52.5	41.3	28.2	20.9	15.2
	118	-	39.9	27.7	20.2	15.2
	124	-	38.7	27.5	19.6	15.2
	131	-	36.6	27.1	19.1	15.2
	138	-	34.3	26.8	18.7	15.2
	144	-	31.8	26.2	18.3	15.2
	151	-	29.0	25.7	18.0	15.2
	157	-	-	25.3	17.6	15.0
	164	-	-	24.9	17.4	14.9
	177	-	-	23.6	16.7	14.9
	190	-	-	-	16.3	14.9
	203	-	-	-	15.8	14.9
	216	-	-	-	15.4	14.7
	229	-	-	-	-	14.7
	243	-	-	-	-	14.5
	256	-	-	-	-	14.5
	65	43.0	-	-	-	-
	72	42.3	32.8	-	-	-
	79	41.6	32.6	-	-	-
	85	40.8	32.4	22.0	-	-
	92	39.8	32.1	21.8	-	-
	98	39.2	31.9	21.6	17.4	-
	105	38.8	31.7	21.8	17.4	8.8
	111	38.3	31.5	21.1	17.4	8.8
	118	37.9	31.3	20.9	17.1	8.8
	124	-	31.3	20.7	17.1	8.8
	131	-	31.0	20.5	16.9	8.8
	138	-	31.0	20.2	16.9	8.8
	144	-	30.8	20.0	16.7	8.8
	151	-	30.8	19.8	16.7	8.8
	157	-	-	19.6	16.5	8.8
	164	-	-	19.4	16.3	8.8
	177	-	-	18.9	16.0	8.8
	190	-	-	18.5	16.0	8.8
	203	-	-	-	15.8	8.8
	216	-	-	-	15.6	8.8
	229	-	-	-	-	8.8
	243	-	-	-	-	8.8
	256	-	-	-	-	8.8
	65	37.5	-	-	-	-
	72	36.6	-	-	-	-
	79	36.3	21.8	-	-	-
	85	35.9	21.8	-	-	-
	92	35.2	21.8	15.2	-	-
	98	34.4	21.8	15.0	8.8	-
	105	33.7	21.8	14.9	8.8	-
	111	33.1	21.8	14.9	8.8	4.4
	118	32.2	21.6	14.9	8.8	4.4
	124	-	21.6	14.7	8.8	4.4
	131	-	21.6	14.7	8.8	4.4
	138	-	21.6	14.7	8.8	4.4
	144	-	21.6	14.7	8.8	4.4
	151	-	21.3	14.7	8.8	4.4
	157	-	-	14.7	8.8	4.4
	164	-	-	14.5	8.8	4.4
	177	-	-	14.5	8.8	4.4
	190	-	-	14.1	8.8	4.4
	203	-	-	-	8.8	4.4
	216	-	-	-	8.8	4.4
	229	-	-	-	-	4.4
	243	-	-	-	-	4.4
	256	-	-	-	-	4.4
	72	27.7	-	-	-	-
	79	27.5	16.5	-	-	-
	85	27.5	16.5	-	-	-
	92	27.5	16.5	11.9	-	-
	98	27.5	16.5	11.9	-	-
	105	27.5	16.5	11.9	-	-
	111	27.3	16.5	11.9	-	-
	118	-	16.5	11.9	-	-
	124	27.1	16.5	11.9	-	-
	131	-	16.5	11.9	-	-
	138	-	16.5	11.8	-	-
	144	-	16.5	11.6	-	-
	151	-	16.5	11.4	-	-
	157	-	16.5	11.2	-	-
	164	-	-	10.5	-	-
	177	-	-	10.3	-	-
	190	-	-	9.4	-	-

1) Min. weight of hook block 4,000 lb (5 sheaves)

2) Min. weight of hook block 3,100 lb (3 sheaves)

3) max. wind speed 13.3 mph