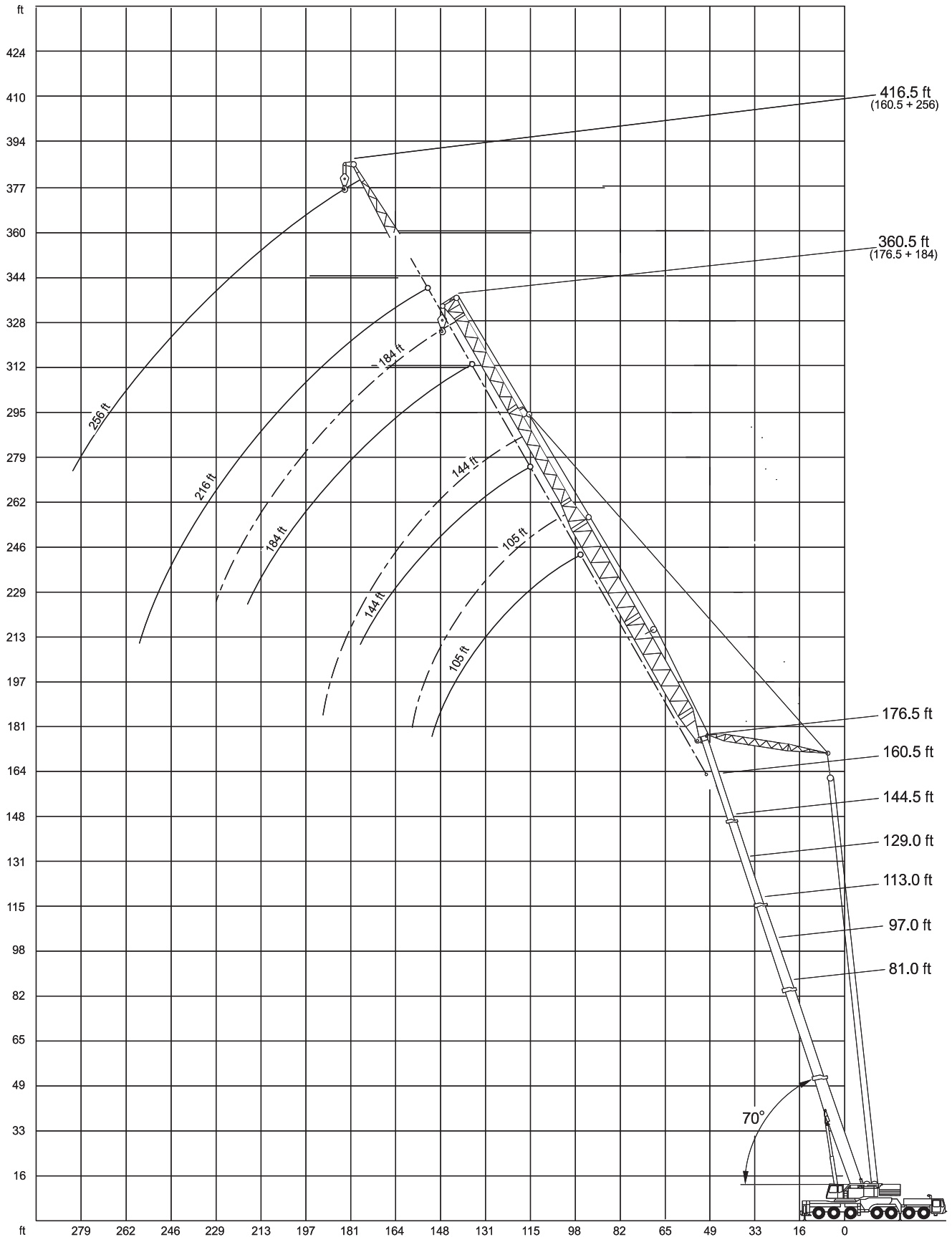




LIFTING CHARTS - All Terrain Cranes

DEMAG MODEL AC 400 - 500 TON CAPACITY

Working ranges luffing fly jib, main boom 70°



STERLING CRANE

Lifting capacities luffing fly jib, main boom 70° in 1,000 lb

211,500 lb  **360° 75%**

Boom	Fly Jib						
	Radius	65 ft ¹⁾	105 ft ²⁾	144 ft	184 ft	216 ft ³⁾	256 ft ³⁾
	ft	1,000 lb					
81.0 ft	69	113.0	-	-	-	-	-
	72	106.0	-	-	-	-	-
	79	95.5	-	-	-	-	-
	85	87.0	84.0	-	-	-	-
	92	-	75.5	-	-	-	-
	98	-	70.5	-	-	-	-
	105	-	64.5	62.5	-	-	-
	111	-	60.5	58.3	-	-	-
	118	-	55.8	54.5	-	-	-
	124	-	52.6	51.0	38.8	-	-
	131	-	-	47.5	38.3	-	-
	138	-	-	44.4	37.9	22.0	-
	144	-	-	42.0	37.5	21.6	-
	151	-	-	39.4	37.0	20.9	-
	157	-	-	37.4	36.2	20.5	-
	164	-	-	-	34.1	19.8	-
177	-	-	-	30.9	18.9	-	
190	-	-	-	27.8	18.0	-	
203	-	-	-	-	17.0	-	
216	-	-	-	-	16.1	-	
97.0 ft	92	-	73.5	-	-	-	-
	98	-	67.5	-	-	-	-
	105	-	62.0	-	-	-	-
	111	-	58.1	53.0	-	-	-
	118	-	53.6	50.7	-	-	-
	124	-	50.4	48.9	-	-	-
	131	-	-	46.1	30.8	-	-
	138	-	-	43.1	30.8	-	-
	144	-	-	40.7	30.8	-	-
	151	-	-	38.3	30.8	20.7	-
	157	-	-	36.3	30.8	20.5	-
	164	-	-	34.4	30.8	20.2	-
	177	-	-	-	29.7	19.4	-
	190	-	-	-	26.9	18.5	-
	203	-	-	-	24.5	17.6	-
	216	-	-	-	-	16.7	-
229	-	-	-	-	15.9	-	
113.0 ft	98	-	55.5	-	-	-	-
	105	-	52.6	-	-	-	-
	111	-	50.2	-	-	-	-
	118	-	47.6	41.2	-	-	-
	124	-	46.0	40.0	-	-	-
	131	-	44.3	38.6	-	-	-
	138	-	-	37.4	24.8	-	-
	144	-	-	36.2	24.4	17.8	-
	151	-	-	34.8	24.0	17.8	-
	157	-	-	34.0	23.8	17.8	-
	164	-	-	32.2	23.3	17.6	-
	177	-	-	-	22.7	17.2	15.6
	190	-	-	-	22.0	16.9	15.6
	203	-	-	-	21.6	16.7	15.4
	216	-	-	-	-	16.3	15.4
	229	-	-	-	-	15.8	15.2
243	-	-	-	-	-	15.2	
256	-	-	-	-	-	14.5	
269	-	-	-	-	-	13.2	

211,500 lb  **360° 75%**

Boom	Fly Jib					
	Radius	105 ft ²⁾	144 ft	184 ft	216 ft ³⁾	256 ft ³⁾
	ft	1,000 lb				
129.0 ft	105	43.2	-	-	-	-
	111	41.5	-	-	-	-
	118	40.1	-	-	-	-
	124	38.7	35.4	-	-	-
	131	37.0	33.9	-	-	-
	138	35.6	32.5	-	-	-
	144	-	31.5	24.2	-	-
	151	-	30.4	23.5	-	-
	157	-	29.4	22.9	16.3	-
	164	-	28.2	22.4	16.3	-
	177	-	26.4	21.6	16.0	-
	190	-	-	20.7	16.0	12.3
	203	-	-	19.8	15.8	12.3
	216	-	-	-	15.8	12.3
	229	-	-	-	15.6	12.3
	243	-	-	-	15.4	12.3
256	-	-	-	-	12.3	
269	-	-	-	-	12.3	
282	-	-	-	-	11.4	
144.5 ft	111	32.1	-	-	-	-
	118	32.1	-	-	-	-
	124	31.0	-	-	-	-
	131	29.5	-	-	-	-
	138	28.4	27.5	-	-	-
	144	27.3	26.5	-	-	-
	151	-	25.5	21.8	-	-
	157	-	24.7	21.2	-	-
	164	-	24.0	20.5	-	-
	177	-	22.5	19.4	15.2	-
	190	-	-	18.3	14.7	7.9
	203	-	-	17.4	14.5	7.9
	216	-	-	16.3	14.1	7.9
	229	-	-	-	13.9	7.9
	243	-	-	-	13.6	7.9
	256	-	-	-	-	7.9
269	-	-	-	-	7.9	
282	-	-	-	-	7.9	
160.5 ft	124	29.2	-	-	-	-
	131	28.0	-	-	-	-
	138	27.0	21.1	-	-	-
	144	26.0	20.3	-	-	-
	151	25.1	19.8	-	-	-
	157	-	19.2	13.8	-	-
	164	-	18.7	13.8	-	-
	177	-	17.6	13.6	7.7	-
	190	-	-	13.4	7.7	4.4
	203	-	-	13.2	7.7	4.4
	216	-	-	15.5	7.7	4.4
	229	-	-	-	7.7	4.4
	243	-	-	-	7.7	4.4
	256	-	-	-	7.7	4.4
	269	-	-	-	-	4.4
	282	-	-	-	-	4.4
176.5 ft	131	24.2	-	-	-	-
	138	23.5	-	-	-	-
	144	22.9	14.3	-	-	-
	151	22.4	14.3	-	-	-
	157	21.8	14.3	-	-	-
	164	-	14.3	7.7	-	-
	177	-	14.3	7.7	-	-
	190	-	14.3	7.7	-	-
	203	-	-	7.7	-	-
	216	-	-	7.7	-	-
	229	-	-	7.7	-	-

1) Min. weight of hook block 4,000 lb (5 sheaves)

2) Min. weight of hook block 3,100 lb (3 sheaves)

3) max. wind speed 13.3 mph