

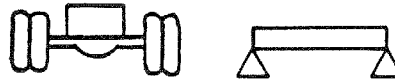
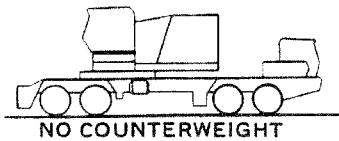
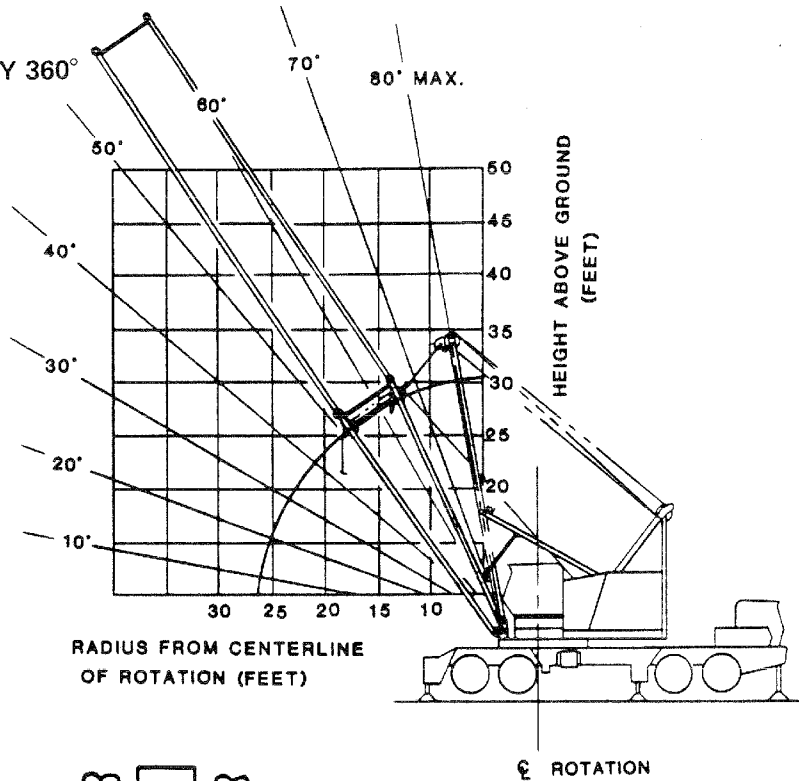
STERLING CRANE



LIFTING CHARTS - Conventional Truck Cranes

GROVE MODEL HL150T - 150 TON CAPACITY

68A BOOM BASE RANGE AND CAPACITY 360°
85% STABILITY ON OUTRIGGERS
75% STABILITY ON TIRES



RADIUS	BOOM ANGLE	ON TIRES	ON TIRES	ON
		FRONT AXLE FREE	FRONT AXLE LOCKED (8)	OUTRIGGERS
10	80.4	32,700	43,000	43,000
11	77.8	27,100	43,000	43,000
12	75.2	22,800	37,700	43,000
13	72.5	19,400	32,100	43,000
14	69.8	16,500	27,500	43,000
15	67.0	14,100	23,900	43,000
16	64.1	12,000	20,800	43,000
17	61.1	10,300	18,100	43,000
18	58.1	8,800	15,900	43,000
19	54.8	7,400	14,000	43,000
20	51.4	6,200	12,300	43,000
25	29.2	1,700	6,100	39,000

- Rated loads appearing in shaded areas are based on structural strength and tipping should not be relied upon as a capacity limitation.
- Rated loads are in pounds and do not exceed 85% of tipping loads on outriggers and 75% of tipping loads on tires as determined by test in accordance with SAE J-765 OCT80.
- On tire rated loads are for the machine with outrigger boxes removed.
- Rated loads are applicable to machines equipped with 14.00 x 24 (20 ply) bias ply or radial tires at 115 psi cold inflation pressure or 16.00 x 21 (22 ply) radial ply tires at 85 psi cold inflation pressure.
- All lifting depends on proper tire inflation, capacity and condition. Rated loads must be reduced for lower tire inflation pressures. Damaged tires are hazardous to safe operation of crane.
- Rated loads are applicable only with machine on a firm level surface.
- Rated loads are for a stationary machine. Do not travel with loads.
- Front axles must be locked on both axles before lifting on tires over side or front.
- Gantry must be pinned in high position before lifting loads.
- Additional boom extension must be added to the boom base section to prevent the mast from overhauling the boom at maximum boom angle (minimum radius). Use of the heaviest hookblock allowable within load chart limits also works best to prevent overhauling. To facilitate boom buildup, the length of extensions to be used for service erection depend on the completed boom configuration and length. Refer to the following chart to determine proper boom sections to use for service erection. The boom length that is required after completion of the erecting procedure is found in the left column (final length of boom). The extensions to be used are noted in the right column (extension required). The total boom length used for service erection must never be longer than 70 ft. for complete boom and 85 ft. for extensions.

Final Length of Boom (in feet)	Extensions Required
50 thru 70	Complete Boom
80, 120, 160	10 ft. Ext. + 20 ft. Ext.
90, 130, 170, 200 thru 260	40 ft. Ext.
100, 140, 180	10 ft. Ext. + 40 ft. Ext.
110, 150, 190, 270 thru 280	20 ft. Ext. + 40 ft. Ext.