



LIFTING CHARTS - Hydraulic Truck Cranes

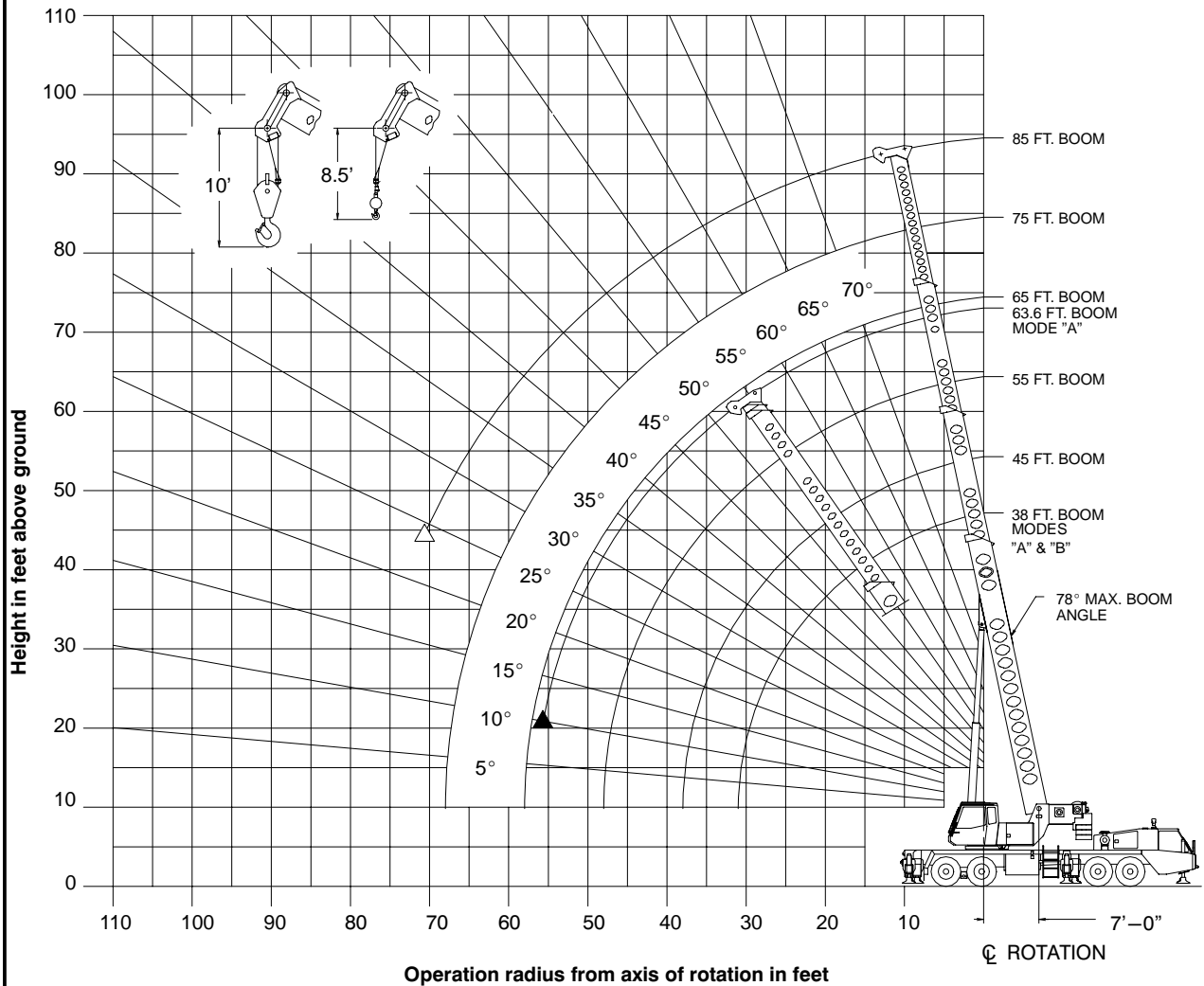
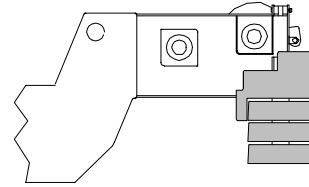
LINK-BELT MODEL HTC-8670 - 70 TON CAPACITY

## WORKING RANGE DIAGRAM

Working Range Diagram  
On Tires



16,000# Counterweight



- ▲ Denotes Main Boom—Boom Mode "A"
- △ Denotes Main Boom—Boom Mode "B"

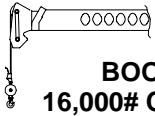
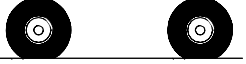
Note: Boom geometry shown is for unloaded condition and crane standing level on firm supporting surface. Boom deflection, subsequent radius and boom angle change must be accounted for when applying load to hook.



### WARNING

Do Not Lower The Boom Below The Minimum Boom Angle For No Load As Shown In The Lift Charts For The Boom Lengths Given. Loss Of Stability Will Occur Causing A Tipping Condition.

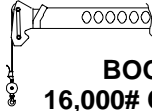


# STERLING CRANE

 <b>On Tire Capacities In Pounds</b> <b>Stationary Capacities – Boom Centered Over Rear</b> <b>Tire Pressure: See Page 8.</b> <b>See Operation Note 18.</b> 					
<b>BOOM MODE "A"</b> <b>16,000# COUNTERWEIGHT</b>					
38 Ft. To 45 Ft. Main Boom					
Load Radius In Feet	38 Ft.		45 Ft.		Load Radius In Feet
	Loaded Boom Angle (Deg.)	Load	Loaded Boom Angle (Deg.)	Load	
10	67.0	34,300			10
12	63.5	31,200			12
15	58.5	27,300	64.0	27,000	15
20	48.5	22,200	56.5	21,900	20
25	36.5	18,200	48.0	17,900	25
30	17.5	15,000	38.0	14,700	30
35			24.5	11,100	35
Min. Boom Angle/ Cap.	0°	14,100	0°	9,400	Min. Boom Angle/ Cap.

55 Ft. To 63.6 Ft. Main Boom					
Load Radius In Feet	55 Ft.		63.6 Ft.		Load Radius In Feet
	Loaded Boom Angle (Deg.)	Load	Loaded Boom Angle (Deg.)	Load	
20	63.5	21,500			20
25	57.0	17,600	62.5	17,300	25
30	50.5	14,300	57.0	14,000	30
35	43.0	10,800	51.0	10,500	35
40	34.0	8,200	45.0	8,000	40
45	22.0	6,200	37.5	6,000	45
50			29.0	4,400	50
55			15.5	3,100	55
Min. Boom Angle/ Cap.	0°	5,100	10°		Min. Boom Angle/ Cap.

**Note: Refer To Page 8 For "Lifting Capacity Deductions" For Capacity Reductions Caused By Stowed Or Erected Auxiliary Load Handling Equipment.**

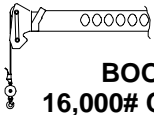


# STERLING CRANE

 <b>On Tire Capacities In Pounds</b> <b>Stationary Capacities – Boom Centered Over Rear</b> <b>Tire Pressure: See Page 8.</b> <b>See Operation Note 18.</b>  							
<b>BOOM MODE "B"</b> <b>16,000# COUNTERWEIGHT</b>							
38 Ft. To 55 Ft. Main Boom							
Load Radius In Feet	38 Ft.		45 Ft.		55 Ft.		Load Radius In Feet
	Loaded Boom Angle (Deg.)	Load	Loaded Boom Angle (Deg.)	Load	Loaded Boom Angle (Deg.)	Load	
10	67.0	34,300					10
12	63.5	31,200					12
15	58.5	27,300	64.0	27,300			15
20	48.5	22,200	56.5	22,200	63.5	22,200	20
25	36.5	18,200	48.0	18,200	57.0	18,200	25
30	17.5	15,000	38.0	15,400	50.5	15,400	30
35			24.5	11,900	43.0	12,300	35
40					34.0	9,700	40
45					22.0	7,700	45
Min. Boom Angle/Cap.	0°	14,100	0°	10,200	0°	6,600	Min. Boom Angle/Cap.

65 Ft. To 85 Ft. Main Boom							
Load Radius In Feet	65 Ft.		75 Ft.		85 Ft.		Load Radius In Feet
	Loaded Boom Angle (Deg.)	Load	Loaded Boom Angle (Deg.)	Load	Loaded Boom Angle (Deg.)	Load	
25	63.0	18,200					25
30	57.5	15,400	62.5	15,400			30
35	52.0	12,600	58.0	12,800	62.5	12,800	35
40	46.0	10,000	53.5	10,100	58.5	10,300	40
45	39.0	8,000	48.5	8,100	54.5	8,300	45
50	31.0	6,400	42.5	6,500	50.0	6,700	50
55	20.0	5,100	36.5	5,300	45.5	5,400	55
60			29.0	4,200	40.0	4,300	60
65			18.5	3,300	34.0	3,400	65
70					27.0	2,700	70
Min. Boom Angle/Cap.	0°	4,400	0°	2,800	24°		Min. Boom Angle/Cap.

**Note: Refer To Page 8 For "Lifting Capacity Deductions" For Capacity Reductions Caused By Stowed Or Erected Auxiliary Load Handling Equipment.**

# STERLING CRANE

 <b>On Tire Capacities In Pounds</b> <b>Pick &amp; Carry Capacities – (1 MPH) Boom Centered Over Rear</b> <b>Tire Pressure: See Page 8.</b> <b>See Operation Note 18.</b>  					
<b>BOOM MODE "A"</b> <b>16,000# COUNTERWEIGHT</b>					
38 Ft. To 45 Ft. Main Boom					
Load Radius In Feet	38 Ft.		45 Ft.		Load Radius In Feet
	Loaded Boom Angle (Deg.)	Load	Loaded Boom Angle (Deg.)	Load	
10	67.0	22,600			10
12	63.5	20,500			12
15	58.5	17,600	64.0	17,300	15
20	48.5	13,800	56.5	13,500	20
25	36.5	10,900	48.0	10,600	25
30	17.5	8,500	38.0	8,300	30
35			24.5	6,400	35
Min. Boom Angle/ Cap.	0°	8,100	0°	5,300	Min. Boom Angle/ Cap.

55 Ft. To 63.6 Ft. Main Boom					
Load Radius In Feet	55 Ft.		63.6 Ft.		Load Radius In Feet
	Loaded Boom Angle (Deg.)	Load	Loaded Boom Angle (Deg.)	Load	
20	63.0	13,100			20
25	57.0	10,300	62.0	10,100	25
30	50.5	7,900	57.0	7,700	30
35	43.0	6,100	51.0	5,900	35
40	34.0	4,500	45.0	4,300	40
45	22.0	3,200	37.5	3,000	45
50			29.0	1,900	50
55			15.5	900	55
Min. Boom Angle/ Cap.	0°	2,400	10°		Min. Boom Angle/ Cap.

**Note: Refer To Page 8 For "Lifting Capacity Deductions" For Capacity Reductions Caused By Stowed Or Erected Auxiliary Load Handling Equipment.**

# STERLING CRANE

On Tire Capacities In Pounds							
Pick & Carry Capacities – (1 MPH) Boom Centered Over Rear							
Tire Pressure: See Page 8.							
See Operation Note 18.							
38 Ft. To 55 Ft. Main Boom							
Load Radius In Feet	38 Ft.		45 Ft.		55 Ft.		Load Radius In Feet
	Loaded Boom Angle (Deg.)	Load	Loaded Boom Angle (Deg.)	Load	Loaded Boom Angle (Deg.)	Load	
10	67.0	22,600					10
12	63.5	20,500					12
15	58.5	17,600	64.0	17,600			15
20	48.5	13,800	56.5	13,800	63.0	13,800	20
25	36.5	10,900	48.0	10,900	57.0	10,900	25
30	17.5	8,500	38.0	8,500	50.5	8,500	30
35			24.5	7,000	43.0	7,000	35
40					34.0	5,900	40
45					21.5	4,600	45
Min. Boom Angle/Cap.	0°	8,100	0°	6,000	0°	3,900	Min. Boom Angle/Cap.

65 Ft. To 85 Ft. Main Boom							
Load Radius In Feet	65 Ft.		75 Ft.		85 Ft.		Load Radius In Feet
	Loaded Boom Angle (Deg.)	Load	Loaded Boom Angle (Deg.)	Load	Loaded Boom Angle (Deg.)	Load	
25	63.0	10,900					25
30	57.5	8,500	62.5	8,500			30
35	52.0	7,000	58.0	7,000	62.5	7,000	35
40	46.0	5,900	53.5	5,900	58.5	5,900	40
45	39.0	4,600	48.0	4,600	54.5	4,600	45
50	31.0	3,700	42.5	3,700	50.0	3,700	50
55	20.0	2,800	36.5	2,800	45.0	2,800	55
60			29.0	2,200	40.0	2,200	60
65			18.5	1,500	34.0	1,500	65
70					27.0	1,000	70
Min. Boom Angle/Cap.	0°	2,300	0°	1,100	24°		Min. Boom Angle/Cap.

**Note:** Refer To Page 8 For "Lifting Capacity Deductions" For Capacity Reductions Caused By Stowed Or Erected Auxiliary Load Handling Equipment.