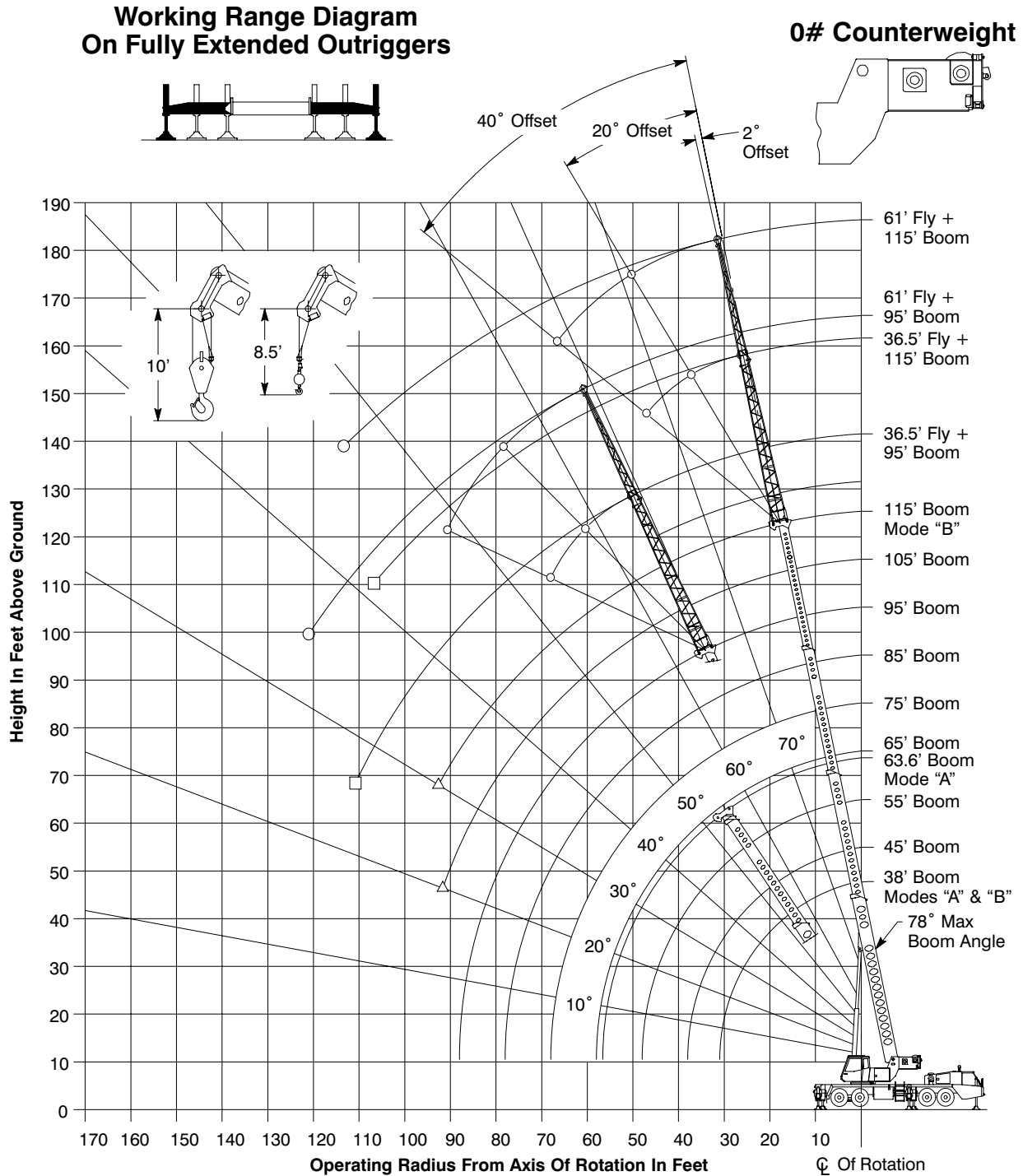




LIFTING CHARTS - Hydraulic Truck Cranes

LINK-BELT MODEL HTC-8675 - 75 TON CAPACITY

Working Range Diagram

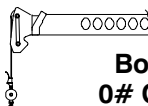
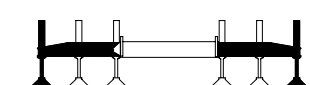


Note: Boom and fly geometry shown are for unloaded condition and crane standing level on firm supporting surface. Boom deflection, subsequent radius, and boom angle change must be accounted for when applying load to hook.

STERLING CRANE

WARNING

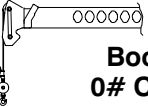
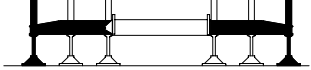
Do Not Lower The Boom Below The Minimum Boom Angle For No Load As Shown In The Lift Charts For The Boom Lengths Given. Loss Of Stability Will Occur Causing A Tipping Condition.

|  Boom Mode "A" 0# Counterweight | | Rated Lifting Capacities In Pounds On Fully Extended Outriggers See Set Up Note 2. | | | | |  | |
|---|--------------------------|---|-----------|--------------------------|--------|-----------|---|--|
| | | 38' | | | 45' | | | |
| Load Radius (ft) | Loaded Boom Angle (Deg.) | 360° | Over Rear | Loaded Boom Angle (Deg.) | 360° | Over Rear | Load Radius (ft) | |
| 10 | 67.0 | 120,300 | 120,300 | 71.0 | 87,400 | 87,400 | 10 | |
| 12 | 64.0 | 107,200 | 107,200 | 68.5 | 87,400 | 87,400 | 12 | |
| 15 | 58.5 | 91,400 | 91,400 | 64.0 | 87,400 | 87,400 | 15 | |
| 20 | 48.5 | 66,200 | 66,200 | 56.5 | 65,800 | 65,800 | 20 | |
| 25 | 36.5 | 44,500 | 44,500 | 48.0 | 43,800 | 43,800 | 25 | |
| 30 | 17.5 | 31,500 | 31,500 | 38.0 | 31,200 | 31,200 | 30 | |
| 35 | | | | 24.5 | 23,000 | 23,300 | 35 | |
| Min.Bm. Ang./Cap. | 0 (31.0) | 25,200 | 25,200 | 0 (38.0) | 19,100 | 19,700 | Min.Bm. Ang./Cap. | |

Note: Refer To Page 8 For "Capacity Deductions" Caused by Auxiliary Load Handling Equipment.

() Reference Radius For Minimum Boom Angle Capacities (Shown In Parenthesis) Are In Feet.

STERLING CRANE

|  Boom Mode "A" 0# Counterweight | | Rated Lifting Capacities In Pounds On Fully Extended Outriggers See Set Up Note 2. | | | | |  | |
|---|--------------------------|---|-----------|--------------------------|--------|-----------|---|--|
| | | 55' | | | 63.6' | | | |
| Load Radius (ft) | Loaded Boom Angle (Deg.) | 360° | Over Rear | Loaded Boom Angle (Deg.) | 360° | Over Rear | Load Radius (ft) | |
| 10 | 75.0 | 85,600 | 85,600 | | | | 10 | |
| 12 | 73.0 | 85,600 | 85,600 | 75.5 | 56,300 | 56,300 | 12 | |
| 15 | 69.5 | 85,600 | 85,600 | 73.0 | 56,300 | 56,300 | 15 | |
| 20 | 63.5 | 65,300 | 65,300 | 68.0 | 53,000 | 53,000 | 20 | |
| 25 | 57.5 | 43,100 | 43,100 | 63.0 | 42,600 | 42,600 | 25 | |
| 30 | 50.5 | 30,600 | 30,600 | 57.5 | 30,200 | 30,200 | 30 | |
| 35 | 43.0 | 22,400 | 22,900 | 51.5 | 22,000 | 22,500 | 35 | |
| 40 | 34.0 | 16,700 | 17,600 | 45.0 | 16,300 | 17,300 | 40 | |
| 45 | 22.0 | 12,700 | 13,700 | 38.0 | 12,400 | 13,500 | 45 | |
| 50 | | | | 29.0 | 9,500 | 10,600 | 50 | |
| 55 | | | | 15.5 | 7,200 | 8,300 | 55 | |
| Min.Bm. Ang./Cap. | 0 (48.0) | 10,700 | 11,700 | 0 (56.6) | 6,500 | 7,600 | Min.Bm. Ang./Cap. | |

Note: Refer To Page 8 For "Capacity Deductions" Caused by Auxiliary Load Handling Equipment.

() Reference Radius For Minimum Boom Angle Capacities (Shown In Parenthesis) Are In Feet.

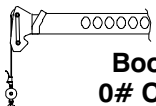
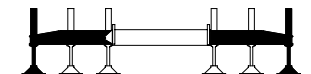
STERLING CRANE

| Load Radius (ft) | | 38' | | | 45' | | | 55' | | | Load Radius (ft) |
|--------------------|----------|--------------------------|---------|-----------|--------------------------|--------|-----------|--------------------------|--------|--------------------|------------------|
| | | Loaded Boom Angle (Deg.) | 360° | Over Rear | Loaded Boom Angle (Deg.) | 360° | Over Rear | Loaded Boom Angle (Deg.) | 360° | Over Rear | |
| 10 | 67.0 | 120,300 | 120,300 | 71.0 | 42,000 | 42,000 | 74.5 | 42,000 | 42,000 | 10 | |
| 12 | 64.0 | 107,200 | 107,200 | 68.0 | 42,000 | 42,000 | 72.5 | 42,000 | 42,000 | 12 | |
| 15 | 58.5 | 91,400 | 91,400 | 64.0 | 42,000 | 42,000 | 69.0 | 42,000 | 42,000 | 15 | |
| 20 | 48.5 | 66,200 | 66,200 | 56.5 | 42,000 | 42,000 | 63.5 | 42,000 | 42,000 | 20 | |
| 25 | 36.5 | 44,500 | 44,500 | 48.0 | 42,000 | 42,000 | 57.5 | 42,000 | 42,000 | 25 | |
| 30 | 17.5 | 31,500 | 31,500 | 38.0 | 32,400 | 32,400 | 50.5 | 33,000 | 33,000 | 30 | |
| 35 | | | | 24.5 | 24,200 | 24,400 | 43.0 | 24,900 | 25,100 | 35 | |
| 40 | | | | | | | 34.0 | 19,000 | 19,700 | 40 | |
| 45 | | | | | | | 22.0 | 14,900 | 15,700 | 45 | |
| Min.Bm. Ang./ Cap. | 0 (31.0) | 25,200 | 25,200 | 0 (38.0) | 19,200 | 19,200 | 0 (48.0) | 12,900 | 13,700 | Min.Bm. Ang./ Cap. | |

| Load Radius (ft) | | 65' | | 75' | | | 85' | | | Load Radius (ft) |
|--------------------|----------|--------------------------|--------|-----------|--------------------------|--------|-----------|--------------------------|--------|--------------------|
| | | Loaded Boom Angle (Deg.) | 360° | Over Rear | Loaded Boom Angle (Deg.) | 360° | Over Rear | Loaded Boom Angle (Deg.) | 360° | |
| 12 | 75.5 | 42,000 | 42,000 | | | | | | | 12 |
| 15 | 73.0 | 42,000 | 42,000 | 75.5 | 42,000 | 42,000 | 77.5 | 42,000 | 42,000 | 15 |
| 20 | 68.0 | 42,000 | 42,000 | 71.5 | 42,000 | 42,000 | 74.5 | 42,000 | 42,000 | 20 |
| 25 | 63.0 | 42,000 | 42,000 | 67.5 | 42,000 | 42,000 | 71.0 | 41,800 | 41,800 | 25 |
| 30 | 58.0 | 33,300 | 33,300 | 63.0 | 33,500 | 33,500 | 67.0 | 33,700 | 33,700 | 30 |
| 35 | 52.5 | 25,300 | 25,400 | 58.5 | 25,500 | 25,600 | 63.0 | 25,600 | 25,700 | 35 |
| 40 | 46.0 | 19,400 | 20,000 | 53.5 | 19,600 | 20,300 | 59.0 | 19,800 | 20,400 | 40 |
| 45 | 39.5 | 15,300 | 16,100 | 48.5 | 15,500 | 16,400 | 54.5 | 15,700 | 16,500 | 45 |
| 50 | 31.0 | 12,200 | 13,200 | 43.0 | 12,500 | 13,400 | 50.5 | 12,700 | 13,600 | 50 |
| 55 | 20.0 | 9,900 | 10,800 | 36.5 | 10,100 | 11,200 | 45.5 | 10,300 | 11,300 | 55 |
| 60 | | | | 29.0 | 8,300 | 9,300 | 40.5 | 8,400 | 9,500 | 60 |
| 65 | | | | 18.5 | 6,700 | 7,700 | 34.5 | 6,900 | 7,900 | 65 |
| 70 | | | | | | | 27.5 | 5,700 | 6,600 | 70 |
| 75 | | | | | | | 17.5 | 4,600 | 5,500 | 75 |
| Min.Bm. Ang./ Cap. | 0 (58.0) | 8,700 | 9,600 | 0 (68.0) | 5,900 | 6,800 | 0 (78.0) | 4,000 | 4,900 | Min.Bm. Ang./ Cap. |

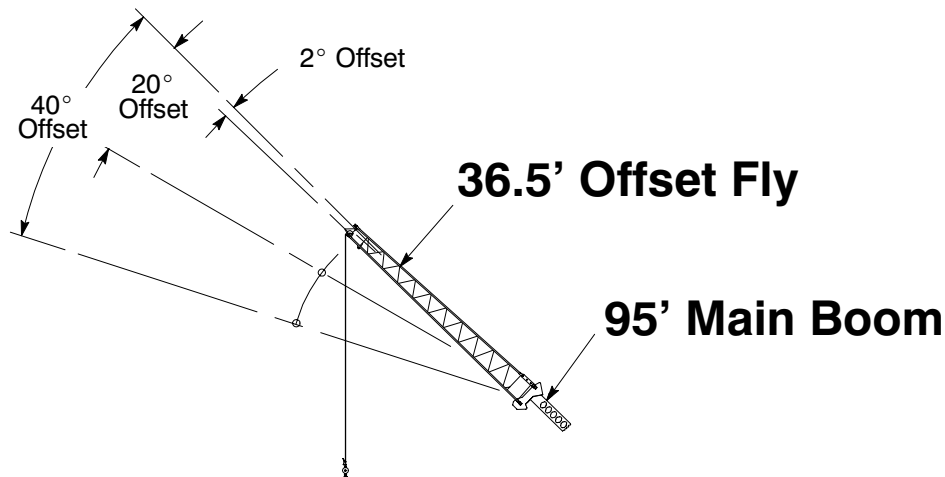
**Note: Refer To Page 8 For "Capacity Deductions" Caused by Auxiliary Load Handling Equipment.
 () Reference Radius For Minimum Boom Angle Capacities (Shown In Parenthesis) Are In Feet.**

STERLING CRANE

|  Boom Mode "B" 0# Counterweight | | Rated Lifting Capacities In Pounds On Fully Extended Outriggers See Set Up Note 2. | | | | | | | | |  | |
|--|--------------------------|---|-----------|--------------------------|--------|-----------|--------------------------|--------|-----------|--------------------|---|--|
| | | 95' | | | 105' | | | 115' | | | | |
| Load Radius (ft) | Loaded Boom Angle (Deg.) | 360° | Over Rear | Loaded Boom Angle (Deg.) | 360° | Over Rear | Loaded Boom Angle (Deg.) | 360° | Over Rear | Load Radius (ft) | | |
| 20 | 76.5 | 38,600 | 38,600 | | | | | | | 20 | | |
| 25 | 73.5 | 33,800 | 33,800 | 75.5 | 30,300 | 30,300 | 77.0 | 24,500 | 24,500 | 25 | | |
| 30 | 70.0 | 29,800 | 29,800 | 72.5 | 27,000 | 27,000 | 74.5 | 24,500 | 24,500 | 30 | | |
| 35 | 66.5 | 25,800 | 25,800 | 69.5 | 24,100 | 24,100 | 72.0 | 22,200 | 22,200 | 35 | | |
| 40 | 63.0 | 19,900 | 20,500 | 66.5 | 20,000 | 20,600 | 69.5 | 20,000 | 20,000 | 40 | | |
| 45 | 59.5 | 15,800 | 16,600 | 63.0 | 15,900 | 16,700 | 66.5 | 15,900 | 16,800 | 45 | | |
| 50 | 55.5 | 12,700 | 13,700 | 60.0 | 12,800 | 13,700 | 63.5 | 12,900 | 13,800 | 50 | | |
| 55 | 51.5 | 10,400 | 11,400 | 56.5 | 10,500 | 11,500 | 60.5 | 10,600 | 11,600 | 55 | | |
| 60 | 47.5 | 8,600 | 9,600 | 53.0 | 8,700 | 9,700 | 57.0 | 8,700 | 9,700 | 60 | | |
| 65 | 43.0 | 7,100 | 8,000 | 49.0 | 7,100 | 8,100 | 54.0 | 7,200 | 8,200 | 65 | | |
| 70 | 38.0 | 5,800 | 6,800 | 45.5 | 5,900 | 6,800 | 50.5 | 6,000 | 6,900 | 70 | | |
| 75 | 32.5 | 4,700 | 5,700 | 41.0 | 4,800 | 5,800 | 47.0 | 4,900 | 5,800 | 75 | | |
| 80 | 26.0 | 3,800 | 4,700 | 36.5 | 3,900 | 4,800 | 43.5 | 4,000 | 4,900 | 80 | | |
| 85 | 16.5 | 3,000 | 3,900 | 31.0 | 3,100 | 4,000 | 39.5 | 3,200 | 4,100 | 85 | | |
| 90 | | | | 25.0 | 2,500 | 3,300 | 35.0 | 2,500 | 3,400 | 90 | | |
| Min.Bm. Ang./ Cap. | 0 (88.0) | 2,600 | 3,400 | 20.0 (92.5) | | | 30.0 (93.8) | | | Min.Bm. Ang./ Cap. | | |

Note: Refer To Page 8 For "Capacity Deductions" Caused by Auxiliary Load Handling Equipment.
() Reference Radius For Minimum Boom Angle Capacities (Shown In Parenthesis) Are In Feet.

STERLING CRANE



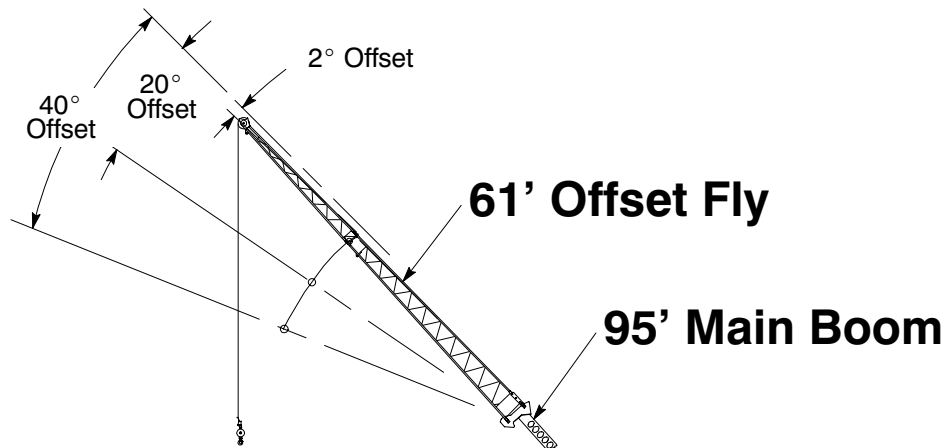
| Boom Mode "B" 0# Counterweight | | Rated Lifting Capacities In Pounds On Fully Extended Outriggers See Set Up Note 2. | | | | | | |
|-----------------------------------|--------------------------|--|--------------------------|--------|--------------------------|-------|------------------|--|
| Load Radius (ft) | 2° Offset | | 20° Offset | | 40° Offset | | Load Radius (ft) | |
| | Loaded Boom Angle (Deg.) | 360° | Loaded Boom Angle (Deg.) | 360° | Loaded Boom Angle (Deg.) | 360° | | |
| 30 | 76.5 | 16,900 | | | | | 30 | |
| 35 | 74.0 | 14,400 | | | | | 35 | |
| 40 | 72.0 | 13,700 | 76.5 | 10,200 | | | 40 | |
| 45 | 69.5 | 13,100 | 74.5 | 9,600 | | | 45 | |
| 50 | 67.5 | 12,400 | 72.0 | 9,100 | 76.5 | 6,800 | 50 | |
| 55 | 65.0 | 11,800 | 69.5 | 8,700 | 74.0 | 6,800 | 55 | |
| 60 | 62.5 | 10,200 | 67.0 | 8,300 | 71.5 | 6,600 | 60 | |
| 65 | 59.5 | 8,600 | 64.5 | 7,900 | 68.5 | 6,400 | 65 | |
| 70 | 57.0 | 7,300 | 62.0 | 7,600 | 66.0 | 6,300 | 70 | |
| 75 | 54.0 | 6,200 | 59.5 | 7,100 | 63.0 | 6,100 | 75 | |
| 80 | 51.0 | 5,300 | 56.5 | 6,000 | 60.0 | 6,000 | 80 | |
| 85 | 48.0 | 4,500 | 53.0 | 5,100 | 57.0 | 5,600 | 85 | |
| 90 | 45.0 | 3,800 | 50.0 | 4,400 | 53.5 | 4,800 | 90 | |
| 95 | 41.5 | 3,200 | 46.5 | 3,700 | 49.5 | 4,000 | 95 | |
| 100 | 38.0 | 2,600 | 42.5 | 3,000 | 45.5 | 3,300 | 100 | |
| 105 | 34.0 | 2,100 | 38.5 | 2,500 | 40.5 | 2,700 | 105 | |
| 110 | 29.5 | 1,700 | 34.0 | 2,000 | | | 110 | |
| 115 | | | 28.5 | 1,500 | | | 115 | |

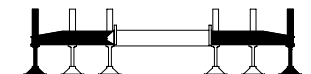
WARNING

Do Not Lower 36.5' Offset Fly In Working Position Below 27° Unless Main Boom Length Is 84' Or Less, Since Loss Of Stability Will Occur Causing A Tipping Condition.

Note: Refer To Page 8 For "Capacity Deductions" Caused by Auxiliary Load Handling Equipment.

STERLING CRANE



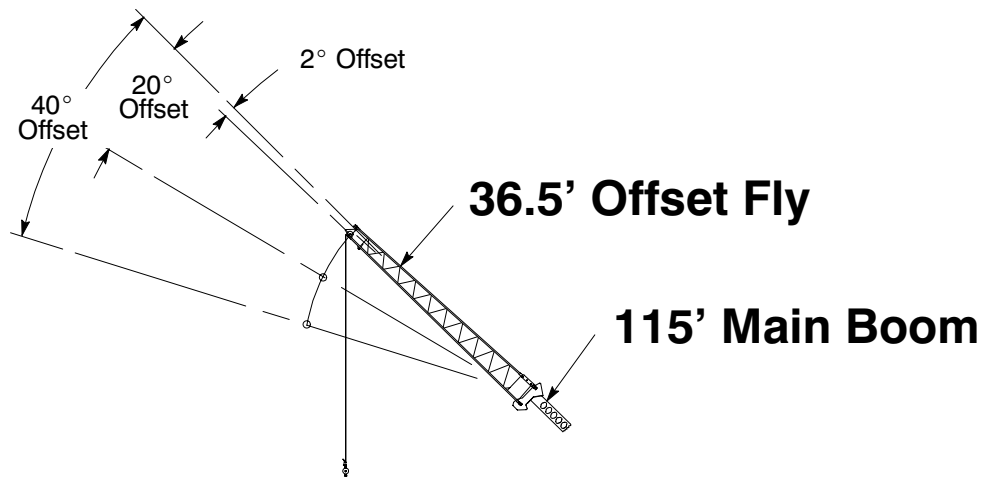
| Boom Mode "B" 0# Counterweight | | Rated Lifting Capacities In Pounds On Fully Extended Outriggers See Set Up Note 2. | | | | |  | |
|---|--------------------------|---|--------------------------|-------|--------------------------|-------|---|--|
| Load Radius (ft) | 2° Offset | | 20° Offset | | 40° Offset | | Load Radius (ft) | |
| | Loaded Boom Angle (Deg.) | 360° | Loaded Boom Angle (Deg.) | 360° | Loaded Boom Angle (Deg.) | 360° | | |
| 35 | 77.5 | 9,500 | | | | | 35 | |
| 40 | 75.5 | 9,100 | | | | | 40 | |
| 45 | 74.0 | 8,500 | | | | | 45 | |
| 50 | 72.0 | 7,900 | | | | | 50 | |
| 55 | 70.0 | 7,400 | 77.0 | 5,200 | | | 55 | |
| 60 | 68.0 | 6,900 | 75.0 | 4,900 | | | 60 | |
| 65 | 66.0 | 6,400 | 73.0 | 4,600 | | | 65 | |
| 70 | 64.0 | 6,000 | 71.0 | 4,400 | 77.5 | 3,400 | 70 | |
| 75 | 62.0 | 5,600 | 69.0 | 4,200 | 75.0 | 3,300 | 75 | |
| 80 | 60.0 | 5,300 | 66.5 | 4,000 | 73.0 | 3,200 | 80 | |
| 85 | 57.5 | 5,000 | 64.5 | 3,900 | 70.5 | 3,100 | 85 | |
| 90 | 55.5 | 4,500 | 62.5 | 3,700 | 68.0 | 3,100 | 90 | |
| 95 | 53.0 | 3,800 | 60.0 | 3,600 | 65.5 | 3,000 | 95 | |
| 100 | 50.5 | 3,300 | 57.5 | 3,400 | 63.0 | 2,900 | 100 | |
| 105 | 47.5 | 2,800 | 55.0 | 3,300 | 60.0 | 2,900 | 105 | |
| 110 | 45.0 | 2,300 | 52.0 | 3,000 | 57.5 | 2,800 | 110 | |
| 115 | 42.0 | 1,900 | 49.0 | 2,500 | 54.0 | 2,800 | 115 | |
| 120 | 39.0 | 1,500 | 46.0 | 2,100 | 50.5 | 2,500 | 120 | |
| 125 | | | 42.5 | 1,700 | 46.5 | 2,000 | 125 | |
| 130 | | | 38.5 | 1,300 | 41.5 | 1,500 | 130 | |

WARNING

Do Not Lower 61' Offset Fly In Working Position Below 35.5° Unless Main Boom Length Is 76' Or Less, Since Loss Of Stability Will Occur Causing A Tipping Condition.

Note: Refer To Page 8 For "Capacity Deductions" Caused by Auxiliary Load Handling Equipment.

STERLING CRANE



| Boom Mode "B" 0# Counterweight | | Rated Lifting Capacities In Pounds On Fully Extended Outriggers See Set Up Note 2. | | | | | | |
|-----------------------------------|--------------------------|--|--------------------------|-------|--------------------------|-------|------------------|--|
| Load Radius (ft) | 2° Offset | | 20° Offset | | 40° Offset | | Load Radius (ft) | |
| | Loaded Boom Angle (Deg.) | 360° | Loaded Boom Angle (Deg.) | 360° | Loaded Boom Angle (Deg.) | 360° | | |
| 35 | 76.5 | 10,500 | | | | | 35 | |
| 40 | 75.0 | 10,500 | | | | | 40 | |
| 45 | 73.0 | 10,500 | 77.5 | 9,200 | | | 45 | |
| 50 | 71.5 | 10,500 | 75.5 | 8,900 | | | 50 | |
| 55 | 69.5 | 10,500 | 73.5 | 8,600 | 77.5 | 6,800 | 55 | |
| 60 | 67.5 | 9,900 | 71.5 | 8,200 | 75.0 | 6,600 | 60 | |
| 65 | 65.0 | 8,300 | 69.5 | 8,000 | 73.0 | 6,500 | 65 | |
| 70 | 63.0 | 7,000 | 67.5 | 7,700 | 71.0 | 6,300 | 70 | |
| 75 | 60.5 | 5,900 | 65.5 | 6,900 | 68.5 | 6,200 | 75 | |
| 80 | 58.0 | 5,000 | 63.0 | 5,900 | 66.5 | 6,100 | 80 | |
| 85 | 55.5 | 4,200 | 60.5 | 5,000 | 64.0 | 5,600 | 85 | |
| 90 | 53.0 | 3,500 | 57.5 | 4,200 | 61.0 | 4,700 | 90 | |
| 95 | 50.5 | 2,900 | 55.0 | 3,500 | 58.5 | 4,000 | 95 | |
| 100 | 47.5 | 2,300 | 52.0 | 2,900 | 55.5 | 3,300 | 100 | |
| 105 | 45.0 | 1,800 | 49.5 | 2,300 | 52.0 | 2,700 | 105 | |
| 110 | | | 46.0 | 1,800 | 49.0 | 2,100 | 110 | |
| 115 | | | 43.0 | 1,400 | 45.5 | 1,600 | 115 | |

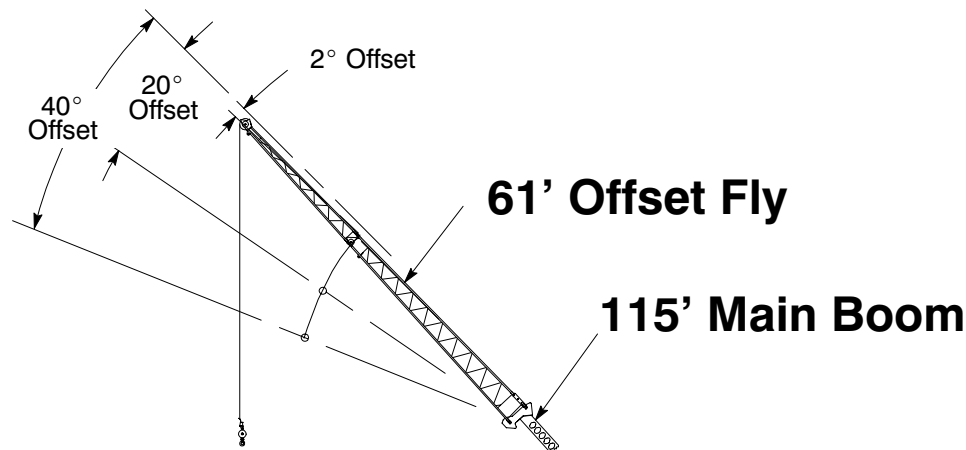


WARNING

Do Not Lower 36.5' Offset Fly In Working Position Below 42° Unless Main Boom Length Is 84' Or Less, Since Loss Of Stability Will Occur Causing A Tipping Condition.

Note: Refer To Page 8 For "Capacity Deductions" Caused by Auxiliary Load Handling Equipment.

STERLING CRANE



| Boom Mode "B" 0# Counterweight | | Rated Lifting Capacities In Pounds On Fully Extended Outriggers See Set Up Note 2. | | | | | | |
|-----------------------------------|--------------------------|--|--------------------------|-------|--------------------------|-------|------------------|--|
| Load Radius (ft) | 2° Offset | | 20° Offset | | 40° Offset | | Load Radius (ft) | |
| | Loaded Boom Angle (Deg.) | 360° | Loaded Boom Angle (Deg.) | 360° | Loaded Boom Angle (Deg.) | 360° | | |
| 40 | 77.5 | 7,100 | | | | | 40 | |
| 45 | 76.5 | 7,100 | | | | | 45 | |
| 50 | 75.0 | 7,100 | | | | | 50 | |
| 55 | 73.5 | 7,000 | | | | | 55 | |
| 60 | 72.0 | 6,700 | 78.0* | 4,900 | | | 60 | |
| 65 | 70.0 | 6,400 | 76.0 | 4,700 | | | 65 | |
| 70 | 68.5 | 6,200 | 74.5 | 4,500 | | | 70 | |
| 75 | 67.0 | 5,900 | 73.0 | 4,300 | | | 75 | |
| 80 | 65.0 | 5,600 | 71.0 | 4,200 | 76.5 | 3,300 | 80 | |
| 85 | 63.0 | 4,800 | 69.0 | 4,000 | 74.5 | 3,200 | 85 | |
| 90 | 61.0 | 4,100 | 67.5 | 3,900 | 72.5 | 3,100 | 90 | |
| 95 | 59.0 | 3,400 | 65.5 | 3,700 | 70.5 | 3,000 | 95 | |
| 100 | 56.5 | 2,900 | 63.5 | 3,600 | 68.5 | 3,000 | 100 | |
| 105 | 54.5 | 2,400 | 61.5 | 3,300 | 66.5 | 2,900 | 105 | |
| 110 | 52.0 | 1,900 | 59.0 | 2,700 | 64.0 | 2,900 | 110 | |
| 115 | 50.0 | 1,500 | 56.5 | 2,300 | 62.0 | 2,800 | 115 | |
| 120 | | | 54.0 | 1,800 | 59.0 | 2,400 | 120 | |
| 125 | | | 51.5 | 1,400 | 56.5 | 1,900 | 125 | |
| 130 | | | 49.0 | 1,100 | 53.5 | 1,500 | 130 | |
| 135 | | | | | 50.0 | 1,100 | 135 | |

WARNING

Do Not Lower 61' Offset Fly In Working Position Below 47.5° Unless Main Boom Length Is 76' Or Less, Since Loss Of Stability Will Occur Causing A Tipping Condition.

Note: Refer To Page 8 For "Capacity Deductions" Caused by Auxiliary Load Handling Equipment.

* This capacity based on maximum obtainable boom angle.