



TRANSPORTATION SPECS - All Terrain Cranes

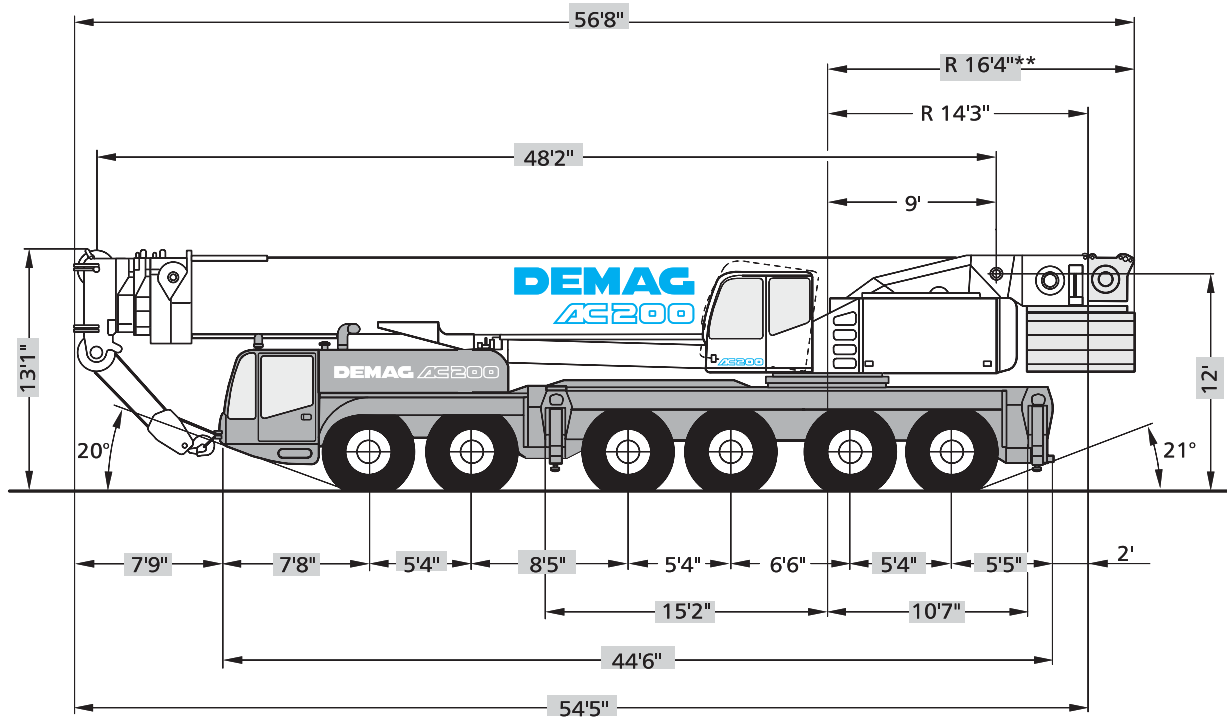
DEMAG MODEL AC 200 - 220 TON CAPACITY

<u>COMPONENT WEIGHTS</u>	<u>LBS.</u>	<u>KGS.</u>	<u>JIB COMPONENTS WEIGHTS</u>	<u>LBS.</u>	<u>KGS.</u>
Complete Crane, 5 Axle Carrier (Incl. Block and Maximum CWT)	273,250	123 945	Lattice Type Swingaway 31.8' – 47.5'	4,189	1 900
Main Unit c/w Outriggers (No cwt and block)	132,250	59 988	Fixed Fly 67.3'- 86.9' – 106.6' - 126.3'		
Counterweight Minimum	0	0	<u>JIB COMPONENTS WEIGHTS</u>		
Counterweight Maximum	141,000	63 957	2 – 20' Inserts, each	1,102	500
			1 – 20' Inserts	772	350
			1 – 20' Inserts	726	420
<u>ADDITIONAL INFORMATION</u>					
107 Ton Block (5 Sheave)	2,646	1 200			
30 Ton Block (Single Sheave)	1,654	750			
Second Wing	4,188	1 900			
Main Load Line (23mm x 300m)	1,575	714			
Auxiliary Load Line (23mm x 300m)	1,575	714			
Spare Tire /Rim (20.5 – R25)	893	405			
<u>COUNTERWEIGHTS</u>					
Base Plate	9,300	4 218			
Bottom Slab (1)	16,000	7 258			
Slabs (2) each	22,700	10 297			
Slab (1)	15,200	6 895			
Side CWTS (2) each	15,500	7 031			
Side CWTS (2) each	11,000	4 990			
<u>TRANSPORTATION</u>					
Average Driving Speed		60 km/hr			

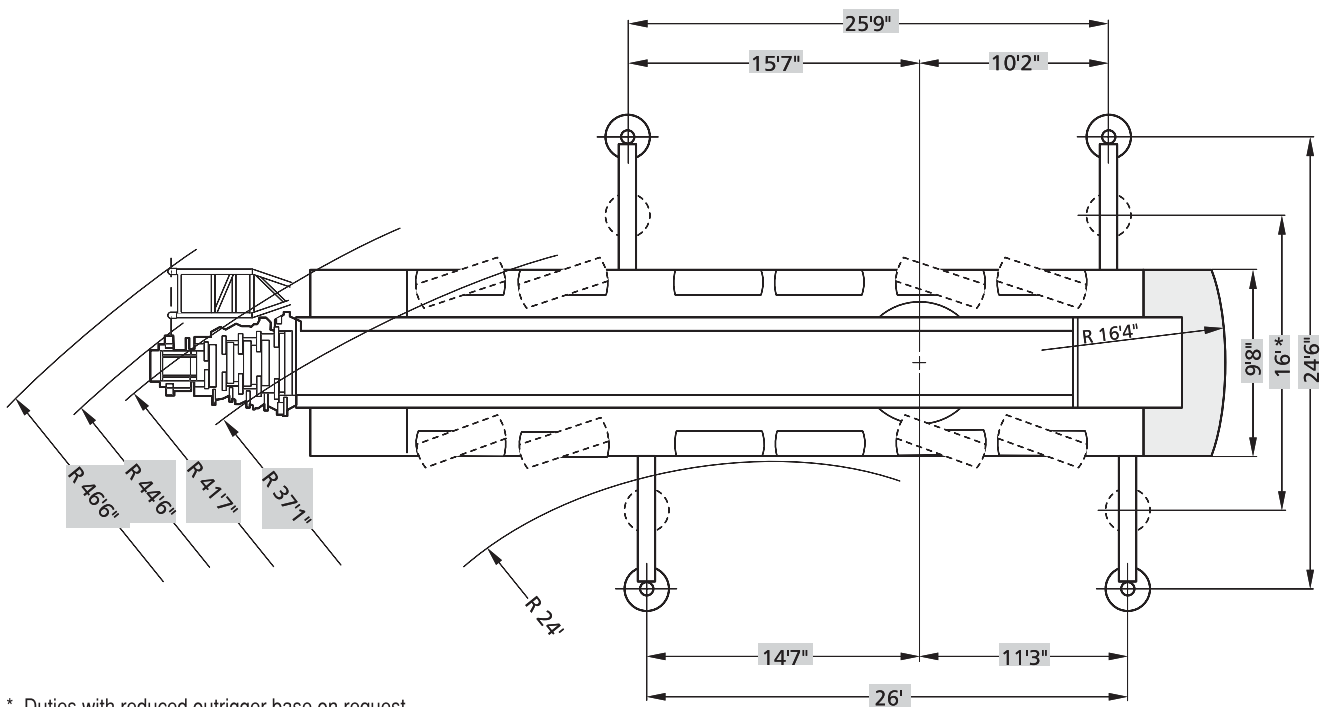
STERLING CRANE

Dimensions of 6-axle carrier

weight in travel order: 158,700 lb



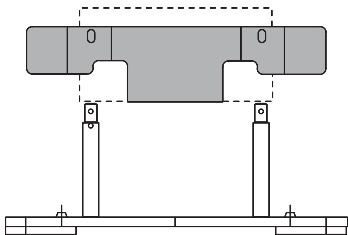
** up to 88,200 lb



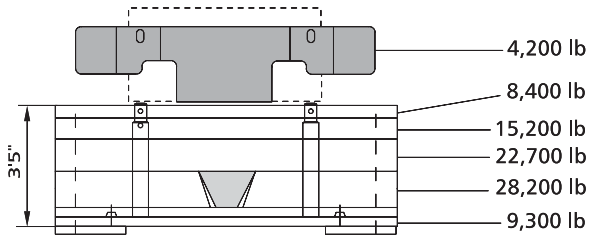
* Duties with reduced outrigger base on request

STERLING CRANE

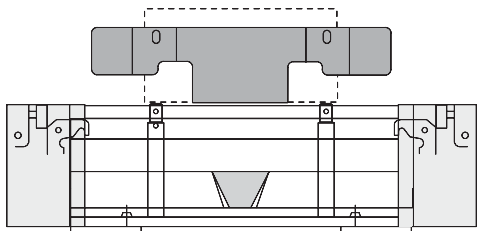
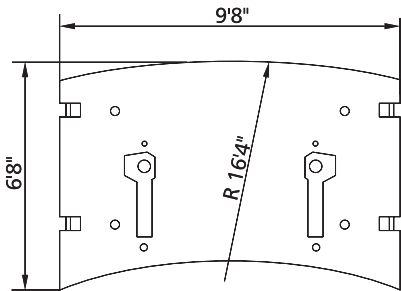
Dimensions of 6-axle carrier



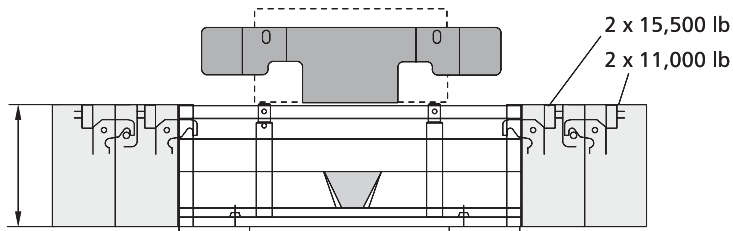
13,500 lb (9,200 lb carrier + 4,300 lb superstructure) counterweight + hoist II or equivalent weight for hoist II



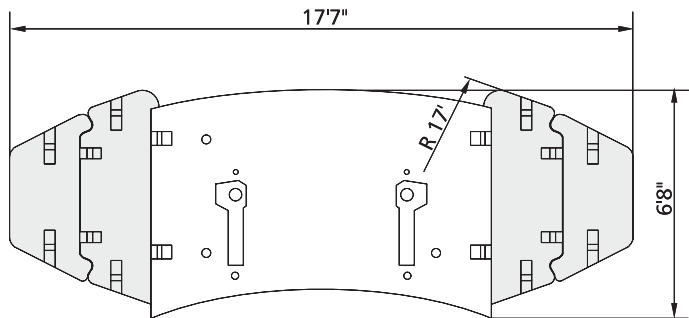
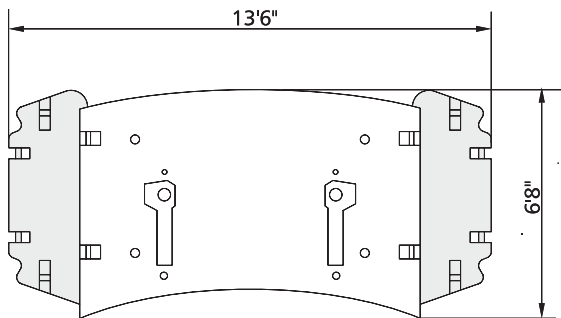
88,200 lb counterweight



119,100 lb counterweight (optional)



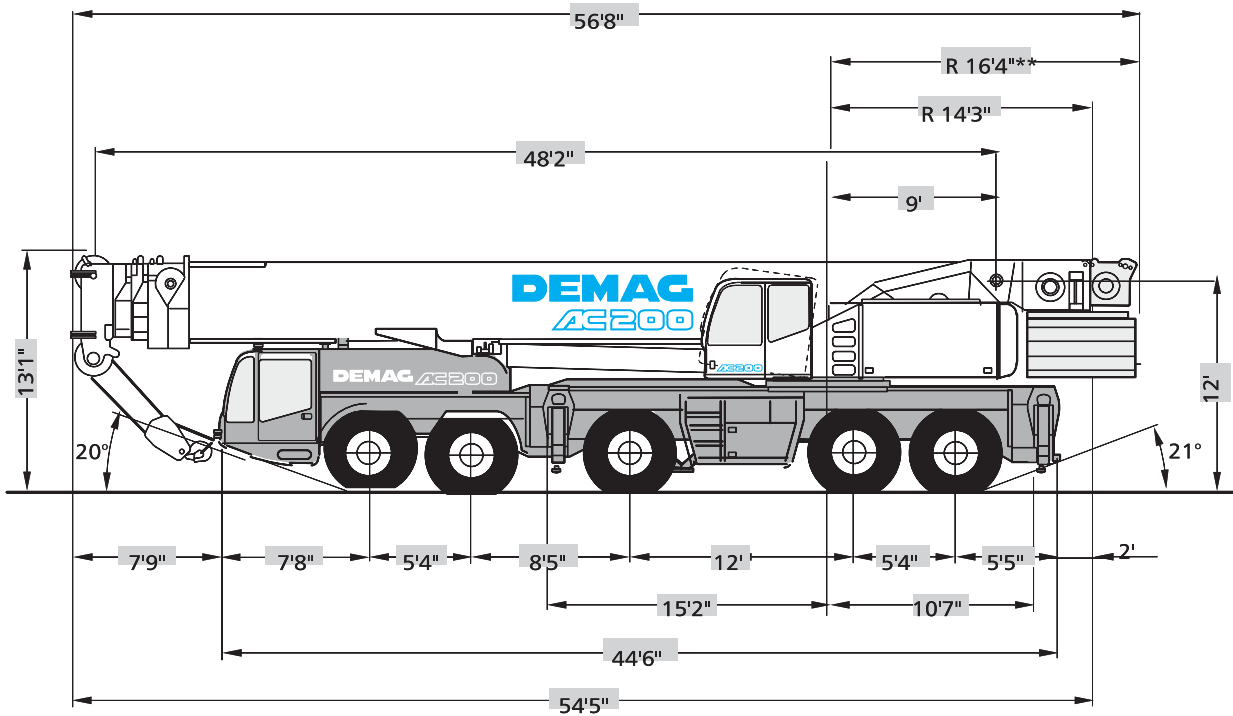
141,000 lb counterweight (optional)



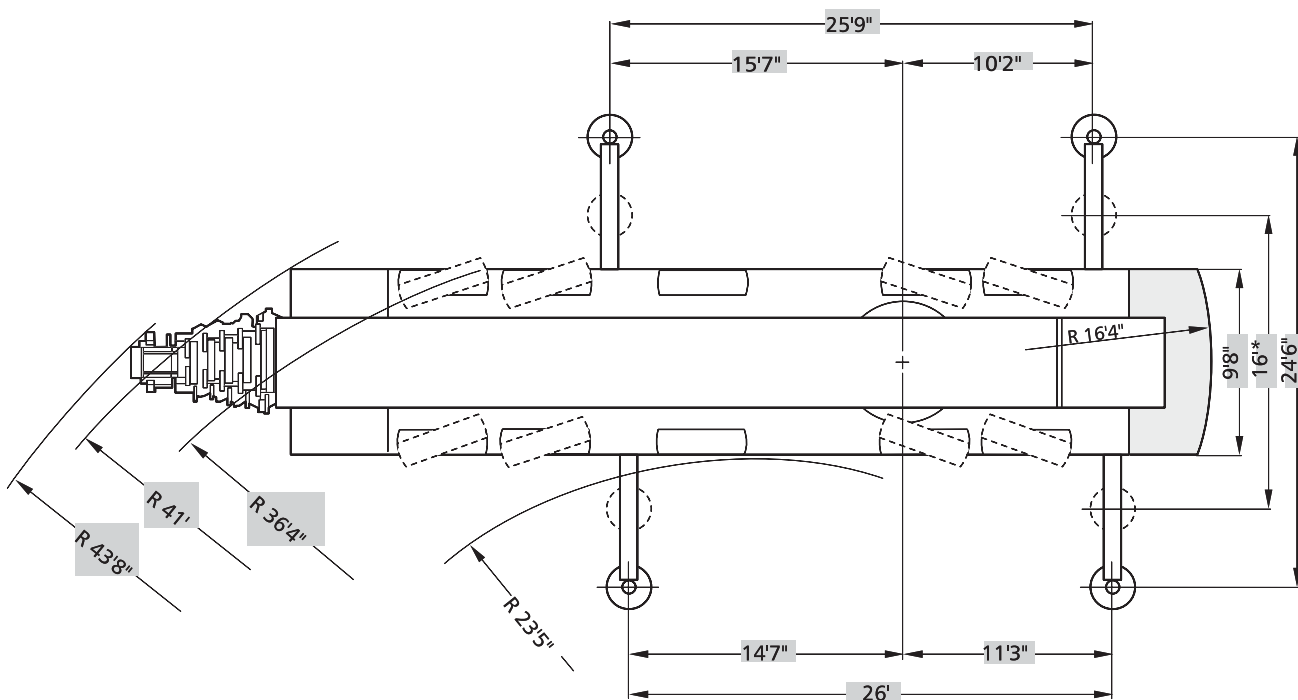
STERLING CRANE

Dimensions of 5-axle carrier (option)

weight in travel order: 132,250 lb



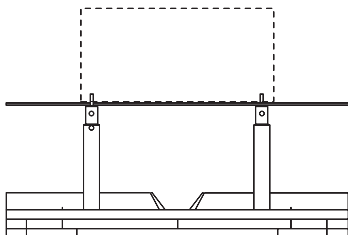
** up to 88,200 lb



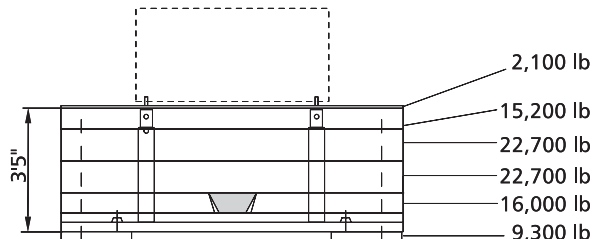
* Duties with reduced outrigger base on request

STERLING CRANE

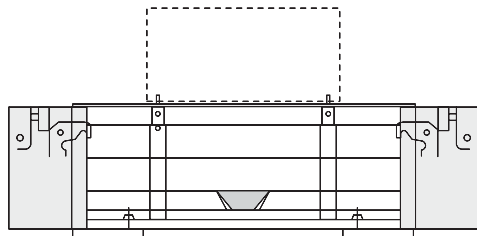
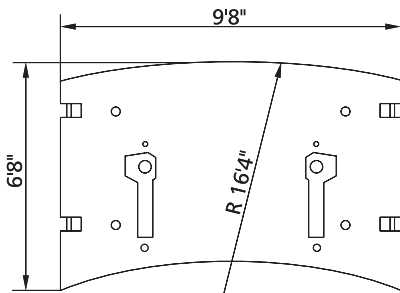
Dimensions of 5-axle carrier (option)



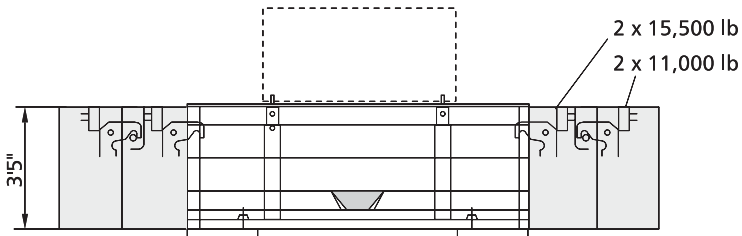
27,600 lb counterweight + hoist II
or equivalent weight for hoist II



88,200 lb counterweight



119,100 lb counterweight (optional)



141,000 lb counterweight (optional)

