



## TRANSPORTATION SPECS - Boom Trucks

### USTC MODEL 1250JBT - 12.5 TON CAPACITY

**COMPONENT WEIGHTS**

	<u>LBS.</u>	<u>KGS.</u>
Complete Crane (incl. block)	26,660	12 093
Crane w/o truck	13,238	6 010

**ADDITIONAL INFORMATION**

16.5 Ton Block	220	100
Main Load Line (9/16" x 300')	120	55
Mounted on Sterling L7501		

**DECK INFORMATION**

8' x 18' wood deck c/w 36" tool box

**TRANSPORTATION**

Average Driving Speed 80 km/hr

Alberta, British Columbia and Saskatchewan Trailer

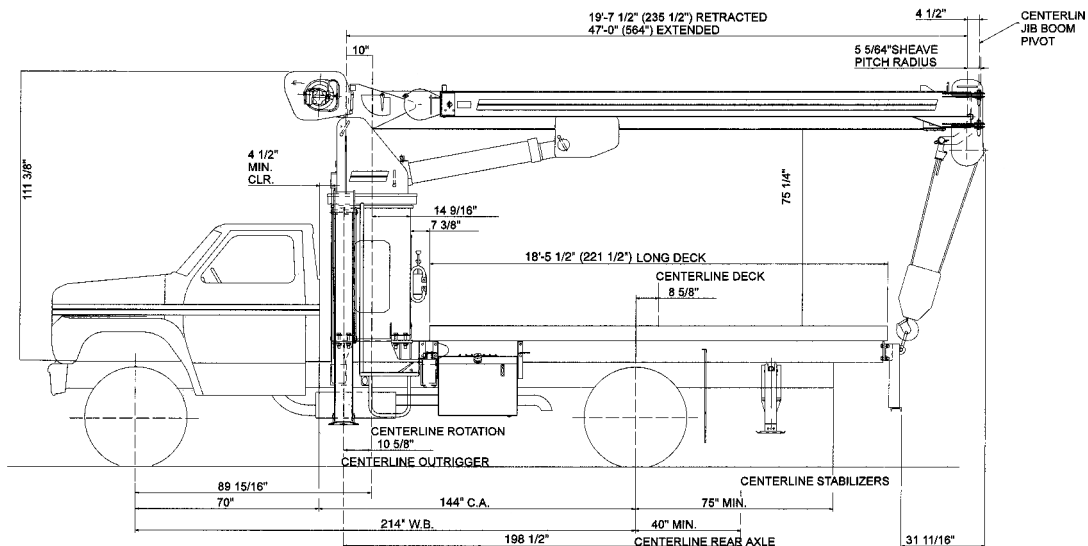
- All Seasons Drive

# STERLING CRANE

## 47 FOOT SINGLE FRONT AXLE MOUNT

Wheelbase: 214"  
 Cab to Axle: 144"  
 Min. A. F.: 75"  
 Min. F.A.W.R.: 12,000 #  
 Min. R.A.W.F.: 20,000 #

Truck Frame: 13.3 in.<sup>3</sup> S.M. on 110,000 psi or 18.0 in.<sup>3</sup> S.M. on 50,000 psi (for 180° area of operation)



## 56 FOOT FRONT MOUNT SINGLE FRONT AXLE MOUNT

Wheelbase: 214"  
 Cab to Axle: 144"  
 Min. A. F.: 75"  
 Min. F.A.W.R.: 12,000 #  
 Min. R.A.W.F.: 20,000 #

Truck Frame: 13.3 in.<sup>3</sup> S.M. on 110,000 psi or 18.0 in.<sup>3</sup> S.M. on 50,000 psi (for 180° area of operation)

