



TRANSPORTATION SPECS - Crawler Cranes

AMERICAN MODEL 9260 - 125 TON CAPACITY

<u>COMPONENT WEIGHTS</u>	<u>LBS.</u>	<u>KGS.</u>	<u>BOOM TYPE 77S</u>	<u>LBS.</u>	<u>KGS.</u>
Complete Crane c/w 70' HH Boom (incl. Block, ball & cwt)	300,010	136 121	OD (tubular) 77" x 77"		
			<u>HAMMERHEAD – 70' MIN / 230' MAX</u>		
House, carbody, butt, gantry & cables (1)	130,400	59 166	Butt 30'	3,980	1 806
House, butt, gantry & cables	95,000	43 104	Transition 40' c/w pendants & HH	6,050	2 745
Carbody c/w axles	35,400	16 062			
			<u>TAPERED TIP 100' MIN / 270' MAX</u>		
Counterweight Type M-M	90,000	40 824	Butt 30'	3,980	1 806
Track –50" shoes (2) each	35,000	14 179	Transition 40' c/w pendants	3,000	1 362
* 125-4-840 Pad Width = 50" Distance Between = 124 3/4"			Tapered tip 30' c/w pendants	3,400	1 543
* 125-4-064 Pad Width = 44" Distance Between = 129"			Insert 10' c/w pendants	1,400	636
			Insert 20' c/w pendants	2,450	1 112
			Insert 50' c/w pendants	5,450	2 473
<u>ADDITIONAL INFORMATION</u>			(See boom & jib section for composition details)		
125 Ton Block, 4 Sheave	3,800	1 724			
15 Ton Ball	1,000	454	<u>JIB NO. 9HL 80' MAX</u>		
Axles (4) each	2,800	1 271	(10' & 20' Sections)		
Track Torque Tubes(2) each	415	189	OD (tubular) 27 3/4" x 27 3/4"		
Catwalks (2) each	300	137	80' c/w pendants	2,500	1 135
A-Frame	3,900	1 770	<u>OPTIONAL</u>		
Outer Bail	2,450	1 112	Jib No. 15 50' Max	2,547	1 155
Main Load Line (1 1/8" x 1200')	2,808	1 275	Jib No. 16 HL 80' Max	3,660	1 660
Auxiliary Hoist Line (1 1/8" x 725')	1,697	770	<u>COUNTERWEIGHT</u>		
Boom Susp. Line (7/8" x 740')	1,051	477	Base	60,000	27 224
			Corner overlays (2) each	10,500	4 764
			Center overlay	9,000	4 084
			CWT Total	90,000	48 824
<u>TRANSPORTATION</u>					
Spring (1)	(1)	64 wh			
Summer (1)	(1)	48 wh			
Winter (1)	(1)	36 wh			

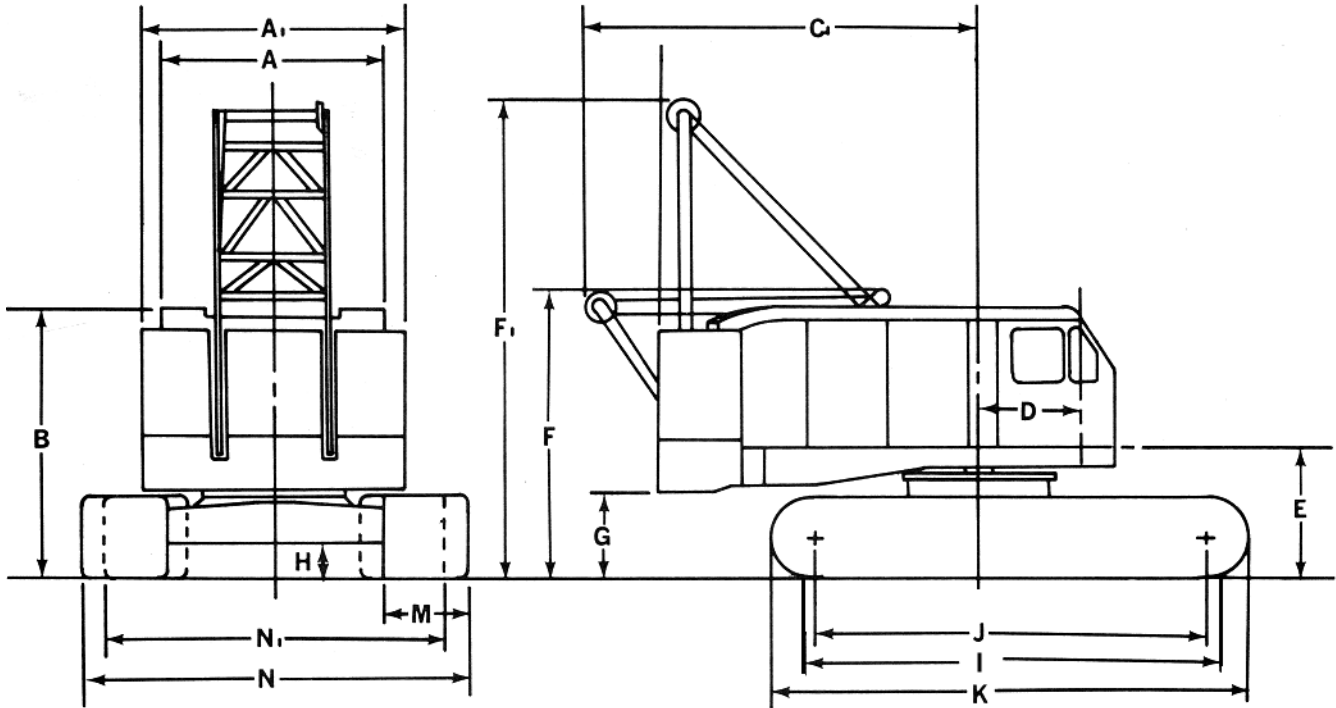
This crane is normally hauled in the following configuration:

1. House, carbody, butt, gantry and cables.
2. Track and boom.
3. Track and boom
4. Counterweight
5. Counterweight

Crane can be shipped complete, with tracks on, for short hauls, and road restrictions permitting. Will require minimum 2 pilots (18'-1 3/4" / 18'-7 3/4" wide when loaded length-ways and 23'-10" wide when loaded cross-ways).

Consideration should be given to splitting the house and carbody for hauls during spring ban period.

STERLING CRANE



GENERAL DIMENSIONS

A.	Width of cab	11' 0"	M.	Width of tread shoes (standard)	44"
A ₁	Width over counterweight	13' 2"		Width of tread shoes (Optional)	38"
B.	Height over cab	13' 7-1/8"		Width of tread shoes (Optional)	50"
C.	Tailswing	17' 0"	N.	Overall width over crawlers	
D.	Center of pivot to center of boom foot	5' 0-3/4"		Extended (with 38" shoes)	17' 7-1/2"
E.	Ground to center boom foot	6' 9-1/8"		Overall width over crawlers	
F.	Height over A-frame, Lowered	14' 6-3/4"		Extended (with 44" shoes)	18' 1-1/2"
F ₁ .	Height over A-frame Raised	24' 6-1/8"		Overall width over crawlers	
G.	Ground to bottom of counterweight	4' 4-3/8"		Extended (with 50" shoes)	18' 7-1/2"
H.	Minimum ground clearance under crawler base	1' 9"	N ₁ .	Overall width over crawlers	
I.	Crawler bearing length	21' 0"		Retracted (with 38" shoes)	15' 9"
J.	Center to center crawler tumblers	19' 8"		Overall width over crawlers	
K.	Overall length of crawlers	23' 9"		Retracted (with 44" shoes)	16' 3"
				Overall width over crawlers	
				Retracted (with 50" shoes)	16' 9"

STERLING CRANE

AMERICAN 77S TAPERED TIP BOOM COMPOSITION

Boom Length In Feet	30 Ft. 77S Inner	10 Ft. 77S Center	20 Ft. 77S Center	50 Ft. 77S Center	40 Ft. 77S Outer Base	30 Ft. 77S Outer
100	1	-	-	-	1	1
110	1	1	-	-	1	1
120	1	-	1	-	1	1
130	1	1	1	-	1	1
140	1	-	2	-	1	1
150	1	-	-	1	1	1
160	1	1	-	1	1	1
170	1	-	1	1	1	1
180	1	1	1	1	1	1
190	1	-	2	1	1	1
200	1	-	-	2	1	1
210	1	1	-	2	1	1
220	1	-	1	2	1	1
230	1	1	1	2	1	1
240	1	-	2	2	1	1
250	1	-	-	3	1	1
260	1	1	-	3	1	1
270	1	-	1	3	1	1
280	1	1	1	3	1	1
290	1	-	2	3	1	1

STERLING CRANE

AMERICAN 77S HAMMERHEAD BOOM COMPOSITION

Boom Length In Feet	30 Ft. 77S Inner	10 Ft. 77S Center	20 Ft. 77S Center	50 Ft. 77S Center	40 Ft. 77S Outer Base	Hammer-Head Tip
70	1	-	-	-	1	1
80	1	1	-	-	1	1
90	1	-	1	-	1	1
100	1	1	1	-	1	1
110	1	-	2	-	1	1
120	1	-	-	1	1	1
130	1	1	-	1	1	1
140	1	-	1	1	1	1
150	1	1	1	1	1	1
160	1	-	2	1	1	1
170	1	-	-	2	1	1
180	1	1	-	2	1	1
190	1	-	1	2	1	1
200	1	1	1	2	1	1
210	1	-	2	2	1	1
220	1	-	-	3	1	1
230	1	1	-	3	1	1
240	1	-	1	3	1	1

STERLING CRANE

AMERICAN BOOM – SECTION WEIGHTS

Boom Sections c/w Pendants	47" S Tubular		59" S & H Tubular		77" S & H Tubular		92" HT & HD Tubular	
	<u>LBS.</u>	<u>KGS.</u>	<u>LBS.</u>	<u>KGS.</u>	<u>LBS.</u>	<u>KGS.</u>	<u>LBS.</u>	<u>KGS.</u>
Butt (Inner)	1,819	825	2,403	1 090	4,409	2 000	8,488	3 850
10 Foot	706	320	948	430	1,422	645	1,808	820
20 Foot	1,235	560	1,713	777	2,447	1 110	3,550	1 610
30 Foot	1,885	855						
40 Foot			2,921	1 325				
50 Foot					5,457	2 475	5,953	2 700
50 Foot XHD							7,297	3 310
Transition			1,433	650	2,999	1 360		
Taper Tip	2,095	950	2,205	1 000	3,417	1 550	11,133	5 050
Hammerhead			2,800	1 270	6,041	2 740		
Load Block			1,488	675 (60T)				

JIB SECTIONS		<u>LBS.</u>	<u>KGS.</u>
#7HL	30 Foot Basic Jib Assembly	1,259	570
	10' Section	199	90
	20' Section	386	175
#9HL	40 Foot Basic Jib Assembly	1,720	780
	10' Section	199	90
	20' Section	386	175
#15	30 Foot Basic Jib Assembly	1,951	885
	10' Section	298	135
#16HL	40 Foot Basic Jib Assembly	2,624	1 190
	10' Section	243	110
	20' Section	518	235
#30	25 Foot Basic Jib Assembly	TBD	TBD
	10' Section	TBD	TBD