



## TRANSPORTATION SPECS - Hydraulic Truck Cranes

### LINK-BELT MODEL HTC-8670LB - 70 TON CAPACITY

#### COMPONENT WEIGHTS

	<u>LBS.</u>	<u>KGS.</u>
Complete Crane w/o Dolly (1) (incl. block, ball & 39'6" – 67' jib)	99,315	45 061
Complete Crane c/w 8,000 lb. counterweight (2)	91,315	41 431
Main Unit	79,446	36 046
Counterweight (3 pieces @ 4000 and 2 @ 2000)	16,000	7 260
Certificate Weight		45 000

#### ADDITIONAL INFORMATION

60 Ton Block	1,109	504
8.5 Ton Ball	360	163
39'6" – 67' Two Piece Fly	2,380	1 080
Boom Dolly	8,500	3 856
Main Load Line (3/4" x 670')	697	316
Auxiliary Load Line (3/4" x 670')	697	316

#### TRANSPORTATION

Maximum Speed: 60 km/hr  
37.5 mph

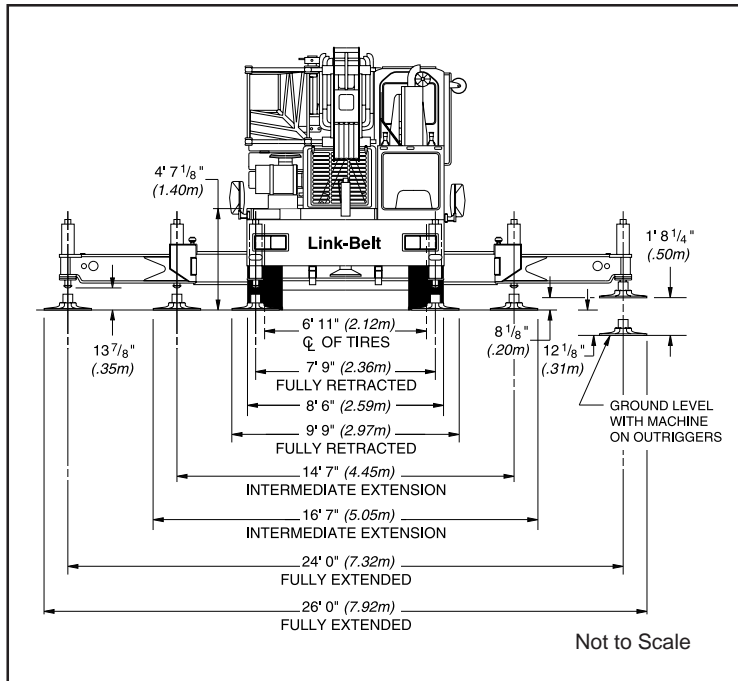
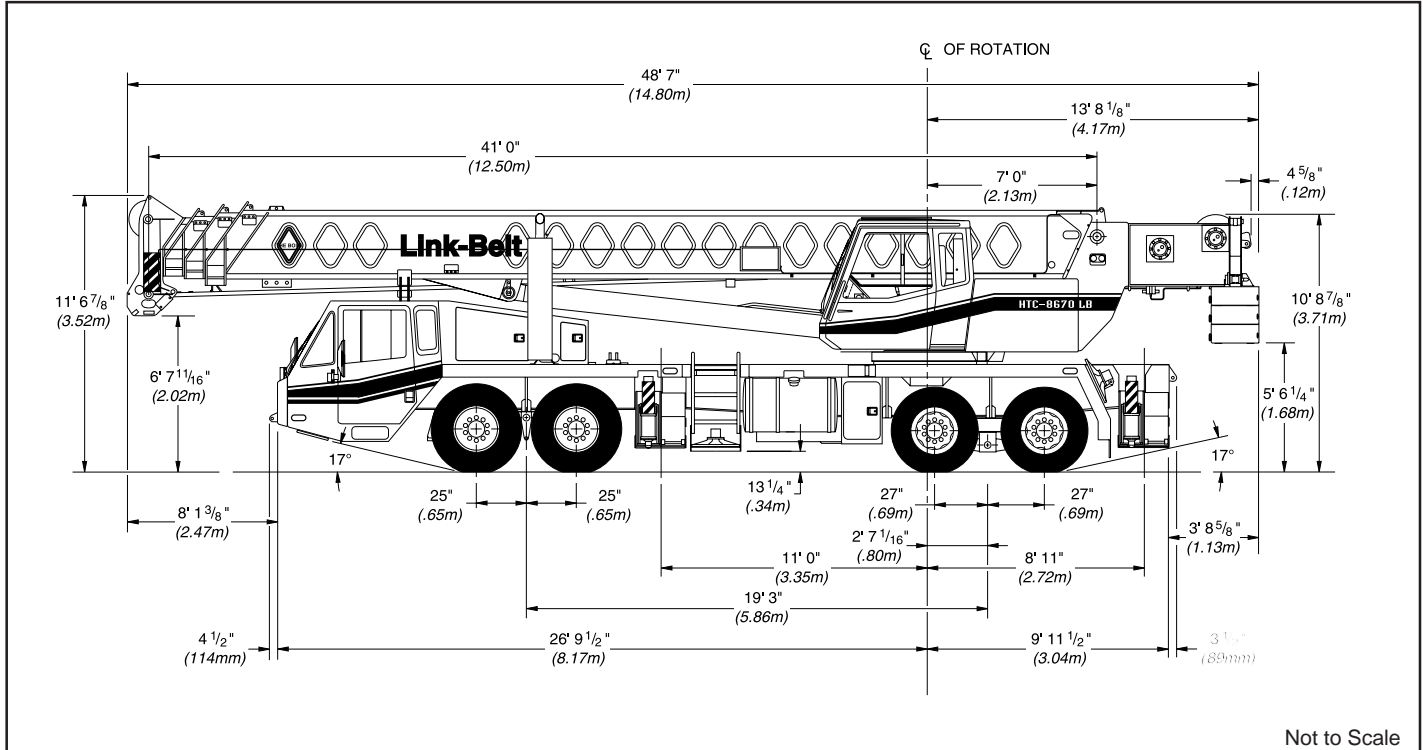
#### Alberta & British Columbia

	<u>Weight</u>	<u>Trailer</u>	<u>Colorado</u>	<u>Weight</u>	<u>Trailer</u>
• Normally	(1) Drive	Tandem Dolly c/w 8,000 lb. cwt.	• Complete Crane (2) c/w 8,000 lb. counterweight	(2) Drive	--
• Spring / Road Ban Period	(1) Drive	Tandem Dolly c/w 12,000 lb. cwt.	• 8,000 lb. counterweight c/w miscellaneous	(2) Drive	S/A Truck

#### Saskatchewan

• Normally	(1) Drive	Tandem Dolly c/w 5 pcs. Cwt.
• Road Ban Period	(1) Drive	Restricted travel on some secondary roads

# STERLING CRANE



General Dimensions	feet	meters
Turning radius (curb to curb)	41' 7"	12.67
Turning radius (wall to wall)	51' 9"	15.77
Ground clearance	13-1/4"	.34
Tailswing	13' 9"	4.19