



TRANSPORTATION SPECS - Hydraulic Truck Cranes

TEREX MODEL T 340 - 40 TON CAPACITY

COMPONENT WEIGHTS

| | <u>LBS.</u> | <u>KGS.</u> |
|--|-------------|-------------|
| Complete Crane (incl. Counterweight, jib, block & ball) | 56,496 | 25 633 |
| Main Unit (w/o Counterweight, jib, block and ball) | 45,148 | 20 485 |

ADDITIONAL INFORMATION

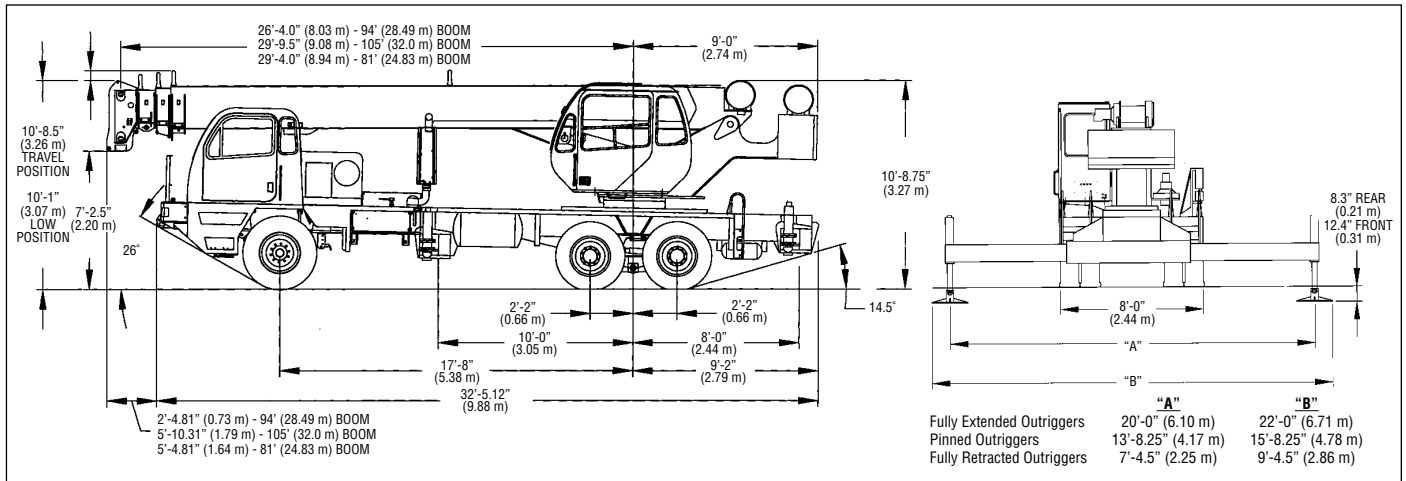
| | | |
|---|-------|-------|
| 40 Ton Block (3 Sheave) | 690 | 313 |
| 7 Ton Ball | 240 | 109 |
| Swing Away Jib 32' | 1,368 | 629 |
| Counterweight: Upper | 7,200 | 3 267 |
| : Front Bumper | 1,850 | 839 |
| Tire Size Front: 425/65R22.5 – 20PR Rear: 11R22.5 – 14PR | | |
| Load Line: Main Hoist 5/8" x 450' (16mm x 137.2m) | 324 | 147 |
| Load Line: Aux. Hoist 5/8" x 450' (16mm x 137.2m) | 324 | 147 |

TRANSPORTATION

| | |
|----------------|----------------------|
| Maximum Speed: | 60 km/hr 37.5 mph |
|----------------|----------------------|

STERLING CRANE

GENERAL DIMENSIONS



| WEIGHTS & AXLE LOADS | GROSS WEIGHT LBS. | UPPER IN TRAVEL POSITION | | GROSS WEIGHT KG. | UPPER IN TRAVEL POSITION | |
|--|----------------------|-----------------------------|--------|---------------------|-----------------------------|--------|
| | | FRONT | REAR | | FRONT | REAR |
| T 300 Crane with ISC 300 Engine, 94' (28.49 m) Boom, 2,000 + 500 lb. (1633 + 227 kg) Cwt., 1/4 Tank of Fuel, 425/65R22.5-20 PR Front and 11R22.5-14 PR Rear Tires, Aluminum Disc Wheels, and 200 lb. (90.7 kg) Operator in Cab. | 47,101 | 16,576 | 30,525 | 21,365 | 7,519 | 13,846 |
| T 340XL Crane with ISC 300 Engine, 105' (32.0 m) Boom, 11,000 + 1,850 lb. (4990 + 227 kg) Cwt., 1/4 Tank of Fuel, 425/65R22.5-20 PR Front and 11R22.5-14 PR Rear Tires, Aluminum Disc Wheels, and 200 lb. (90.7 kg) Operator in Cab. | 60,053 | 16,515 | 43,528 | 27,240 | 7,491 | 19,749 |
| Add Options: | | | | | | |
| 32' (9.68 m) Swing-on Jib on 94' (28.49 m) Boom | + 1,368 | + 797 | + 571 | + 620 | + 362 | + 258 |
| 32' (9.68 m) Swing-on Jib on 81' (24.83 m) Boom | + 1,368 | + 1,030 | + 338 | + 620 | + 467 | + 153 |
| 32' (9.68 m) Swing-on Jib on 105' (32.00 m) Boom | + 1,368 | + 1,117 | + 251 | + 620 | + 507 | + 113 |
| 32'-49' (9.68-14.86 m) Swing on Jib on 94' (28.49 m) Boom | + 1,789 | + 1,004 | + 785 | + 811 | + 455 | + 356 |
| 32'-49' (9.68-14.86 m) Swing on Jib on 81' (28.49 m) Boom | + 1,789 | + 1,307 | + 482 | + 811 | + 593 | + 218 |
| 32'-49' (9.68-14.86 m) Swing on Jib on 105' (32.00 m) Boom | + 1,789 | + 1,343 | + 446 | + 811 | + 609 | + 202 |
| Auxiliary Boom Head on 94' (28.49 m) Boom | + 100 | + 154 | - 54 | + 45 | + 70 | - 25 |
| Auxiliary Boom Head on 81' (24.83 m) Boom | + 100 | + 167 | - 67 | + 45 | + 89 | - 44 |
| Auxiliary Boom Head on 105' (32.00 m) Boom | + 100 | + 170 | - 70 | + 45 | + 77 | - 32 |
| Full Tank of Fuel | + 315 | + 120 | + 195 | + 142 | + 54 | + 88 |
| Auxiliary Winch W/Drum Roller and Wire Rope | + 175 | - 73 | + 248 | + 79 | - 112 | + 191 |
| Heater/Defroster (Upper) | + 60 | - 5 | + 65 | + 27 | - 2 | + 25 |
| Work Lights | + 35 | + 5 | + 30 | + 16 | + 2 | + 18 |
| Sling Box Installed on Left Side of Carrier | + 87 | + 62 | + 25 | + 40 | + 28 | + 12 |
| Sling Box Installed on Right Side of Carrier | + 87 | + 31 | + 56 | + 40 | + 14 | + 26 |
| Pintle Hook (Rear) | + 50 | - 26 | + 76 | + 23 | + 12 | + 34 |
| Electric Remote Control | + 200 | + 100 | + 100 | + 91 | + 45 | + 45 |
| 40 ton (36.3 mt) Quick Reeving Hook Block (On Bumper - 4 Sheave) | + 690 | + 973 | - 283 | + 313 | + 441 | - 128 |
| 7 ton (6.3 mt) Hook and Ball (At boom rack) | + 240 | + 145 | + 95 | + 109 | + 66 | + 43 |
| Substitute: | | | | | | |
| 33-81' (10.15-24.83m) Boom w/3,100 lb (1,406 kg) Upper Cwt. & 500 lb (227 kg) F. Bumper | - 640 | - 630 | - 10 | - 290 | - 286 | - 4 |
| 7,200 lb Upper Cwt w/1,850 F. Bumper (94' Boom) | + 6,636 | - 619 | +7,255 | + 3010 | - 281 | + 3291 |
| 7,200 lb Upper Cwt w/1,850 F. Bumper (81' Boom) | + 5,450 | - 121 | +5,571 | + 2472 | - 55 | + 2527 |
| Aux. Winch W/Drum Roller for Heavy Cwt. (above) | + 5 | + 5 | + 0 | + 2 | + 2 | 0 |
| Metallic Boom Head Sheaves | + 120 | + 196 | - 32 | + 54 | + 89 | - 35 |
| Front Air Suspension | + 100 | + 94 | + 6 | + 46 | + 43 | + 3 |
| Rear Air Suspension | + 344 | 0 | + 344 | + 156 | 0 | + 156 |
| Spin Resistant Wire Rope (per winch) | + 32 | - 12 | + 44 | + 14 | - 6 | + 20 |
| Automatic Transmission w/2-speed axles | + 15 | 0 | + 15 | + 7 | 0 | + 7 |
| Automatic Transmission w/2-speed aux. trans. & 2-speed axles | + 510 | + 300 | + 210 | + 231 | + 136 | + 95 |

NOTE: Weights are for Terex supplied equipment and subject to 2% variation due to manufacturing tolerances.