



TRANSPORTATION SPECS - Rough Terrain Cranes

TADANO MODEL TR-350XL-3 - 35 TON CAPACITY

<u>COMPONENT WEIGHTS</u>		<u>LBS.</u>	<u>KGS.</u>
Complete Crane (incl. block, ball & jib)	(1)	61,520	27 900*

*Actual scaled weight

ADDITIONAL INFORMATION

35 Ton Block		736	334
4.4 Ton Ball		220	100
2 Stage Jib (23'6" – 42')		1,300	590
Main Load Line (16 mm x 195 m)		461	209
Auxiliary Hoist Line (16 mm x 100 m)		236	107

TRANSPORTATION

Alberta

	<u>Weight</u>	<u>Trailer</u>
• Ban	(1)	20 wh
• Summer	(1)	Tri-axle
• Fall	(1)	Tri-axle
• Winter	(1)	Tri-axle

Saskatchewan

• Ban	(1)	Tri & Booster
• Post Ban	(1)	Tri-Axle

British Columbia

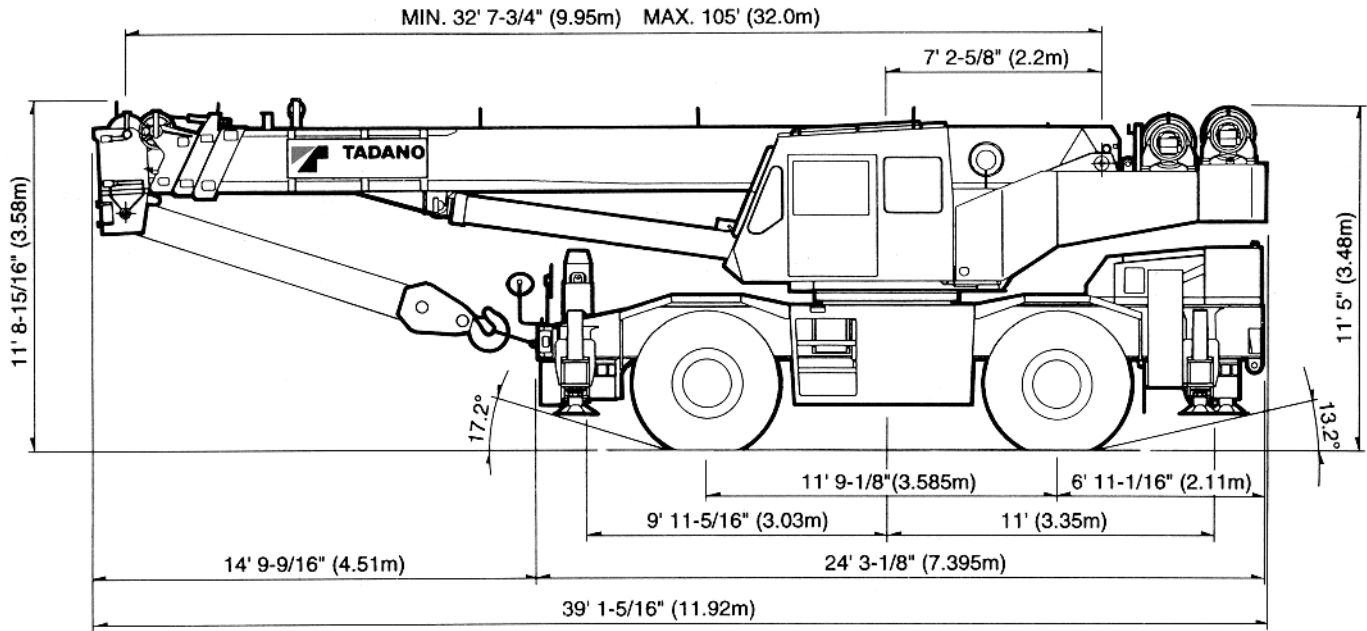
• Ban	(1)	7 axle
• Post Ban	(1)	Tri-axle

Colorado

• Interstate	(1)	Tri-axle
--------------	-----	----------

STERLING CRANE

DIMENSIONS



GENERAL DIMENSIONS (20.5 X 25 Tires)

	Feet	Meters
Turning Radius:		
4 wheel steer	21'	6.4
2 wheel steer	36' 5"	11.1
Tail swing of counterweight	12' 9-9/16"	3.9

