



TRANSPORTATION SPECS - Rough Terrain Cranes

TADANO MODEL TR-600XL-3 - 60 TON CAPACITY

COMPONENT WEIGHTS

	<u>LBS.</u>	<u>KGS.</u>
Complete Crane (1) (incl. counterweight, block, ball & jib)	94,600	42 900
Main Unit c/w Counterweight	90,970	41 275

ADDITIONAL INFORMATION

60 Ton Block (5 Sheave)	1,100	500
6.2 Ton Ball	330	150
Two Stage Swingaway Jib (32.2' – 56.1')	2,200	1 000
Rooster Sheave	128	58
Tire Size 29.5x25-22PR (OR) 4 Total	6,990	3 172
Main Load Line 3/4" x 672' (19mm x 205m)	699	318
Auxiliary Hoist Line 3/4" x 380' (19mm x 116m)	395	180

TRANSPORTATION

Alberta

- Spring
- Summer
- Fall
- Winter

Weight

Trailer

Colorado

- Interstate

Weight

Trailer

9 axle

British Columbia

- Ban
Max. 80,000 lb.
- Post Ban
Stay on 85 000 kg corridor

80,000 lb.

9 axle

(1)

7 axle

Saskatchewan

- Ban

(1)

36 wh

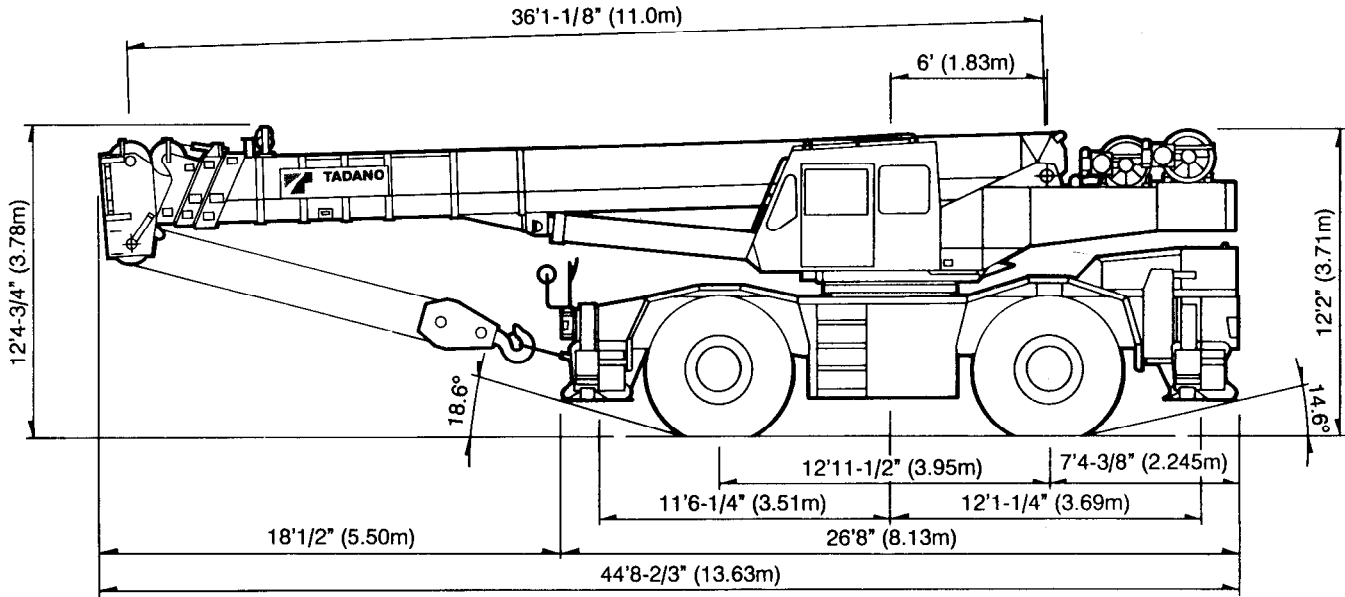
- Post Ban

(1)

32 wh

STERLING CRANE

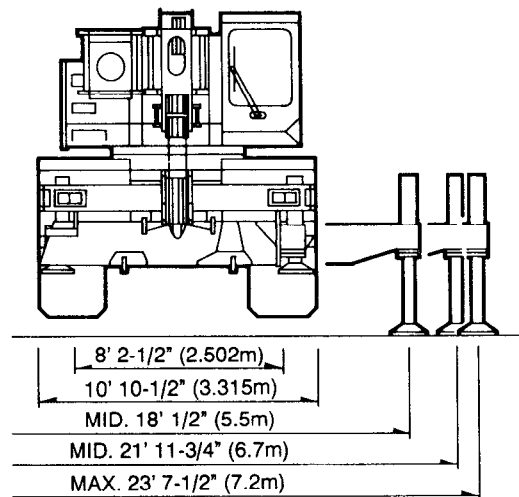
DIMENSIONS



Note: Dimension is with boom angle at -1.5°.

GENERAL DIMENSIONS (29.5x25 Tires)

	Feet	Meters
Turning radius:		
4 wheel steer	21' 11-3/4"	6.7
2 wheel steer	39' 1/2"	11.9
Tail swing of counterweight	13' 6-1/4"	4.12



Specifications are subject to change without notice.